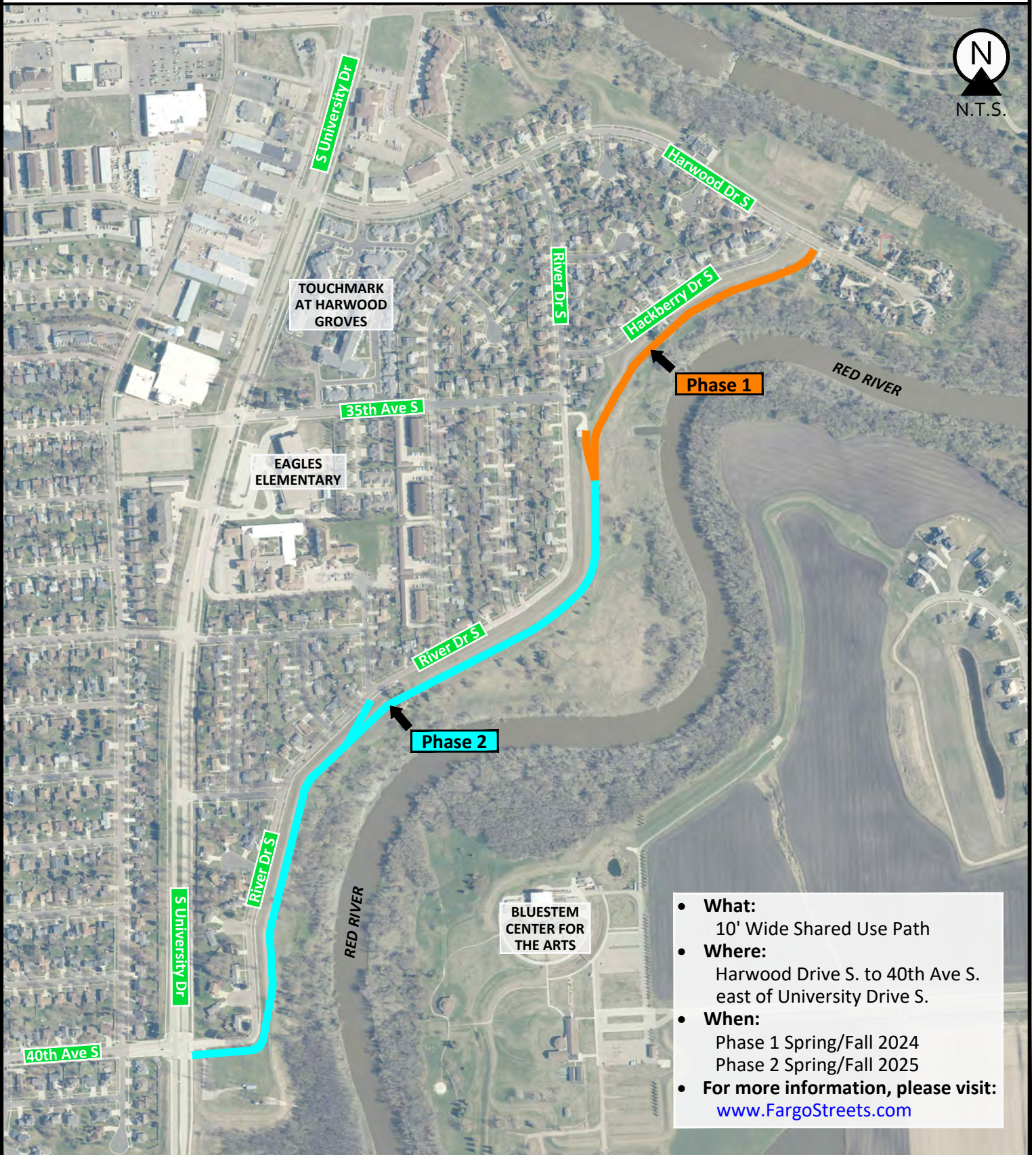


RED RIVER SHARED USE PATH OVERALL PROJECT MAP

CITY OF FARGO IMPROVEMENT DISTRICT SN-23-B0



- **What:**
10' Wide Shared Use Path
- **Where:**
Harwood Drive S. to 40th Ave S.
east of University Drive S.
- **When:**
Phase 1 Spring/Fall 2024
Phase 2 Spring/Fall 2025
- **For more information, please visit:**
www.FargoStreets.com