

Elements of a Land Development Code

What goes into a Land Development Code?

The Land Development Code (LDC) regulates land use and development, and is one part of the City's toolkit in implementing the Comprehensive Plan. The LDC is made up of many different types of regulations and requirements, working together. Each is described below.

Use Regulations

Use regulations specify which land uses and activities are permitted, permitted with certain conditions, and prohibited in every zoning district. They also define and categorize the land uses found in the City.

Zoning District Standards

Zoning District standards control height, bulk, building placement, and density. These standards are different across Zoning Districts to reflect the desired community character of different neighborhoods and commercial places.

General Development Standards

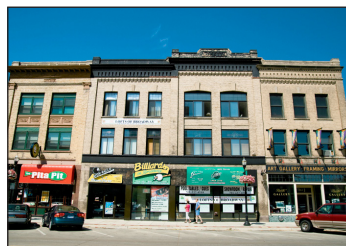
General standards regulate aspects of development across the City, which are not unique to a Zoning District. This includes standards for parking, landscaping, and signage.

Administration and Procedures

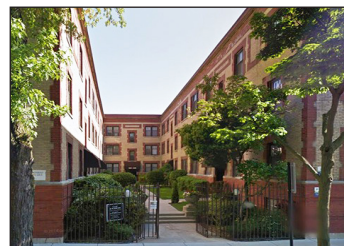
Administrative procedures establish the process for land use permit and development application approval. The Code outlines who approves each permit, and when public hearings and notices are required.



Multi-Family Residential Use



Downtown



Landscaping



Permit Applications



Commercial Use



Residential Neighborhood



Signage



Public Hearings & Noticing