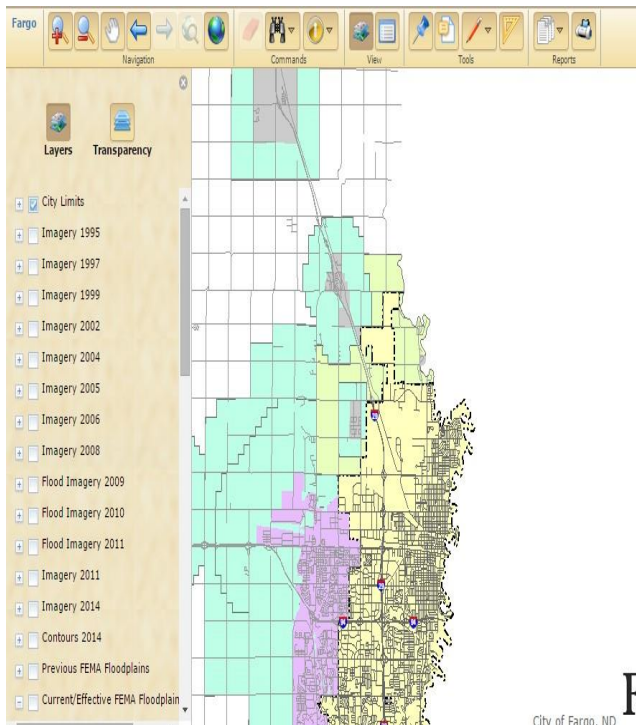
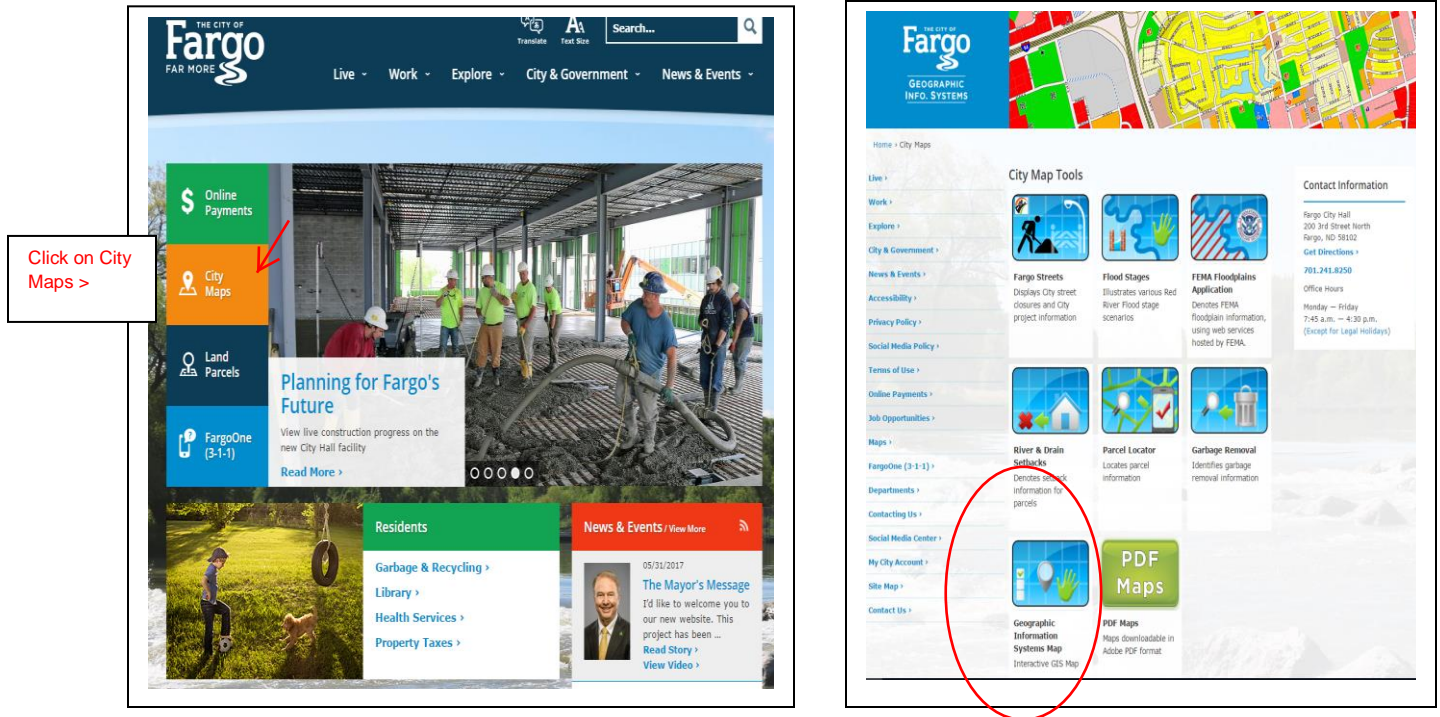


# Interactive GIS Map Instructions

Access Fargo's Interactive GIS Map from any modern browser (Chrome, Internet Explorer, etc.) by searching City of Fargo



This map is based on “layers” meaning you can “build” the map by turning on and off layers (options) you wish to view simply by “checking or un-checking” the box in front of the layer.

Some map layers are turned on automatically at start up.

A description of the map tools (icons) is on page 2.

Page 3 has step-by-step address search instructions.

Page 4 has instructions on how to view LOMC documents.

Please take some time to explore this powerful tool. You can not hurt this map or make any permanent changes to it so click away and learn a new skill.

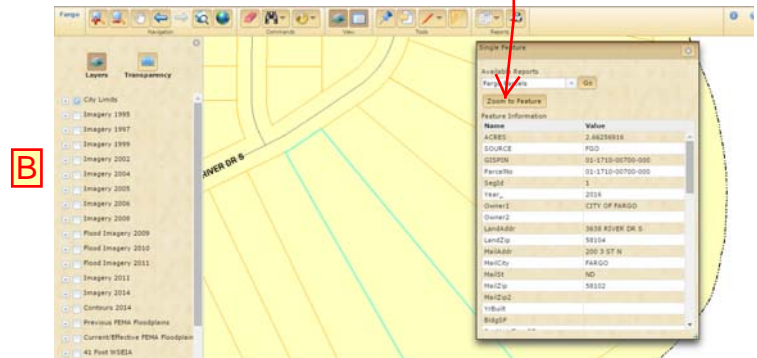
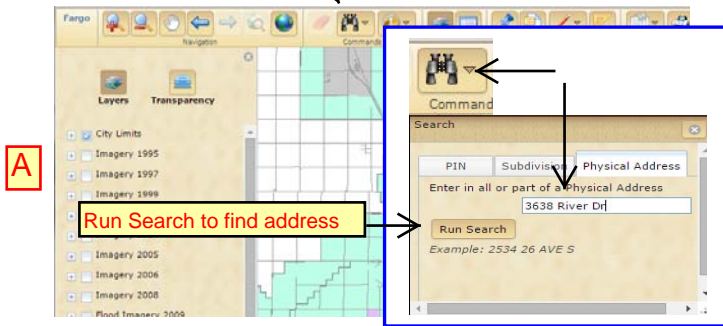
For more instructions on how to use this software click on the “?” icon at far right of the toolbar.

# Interactive GIS Map Instructions

## Searching by Address

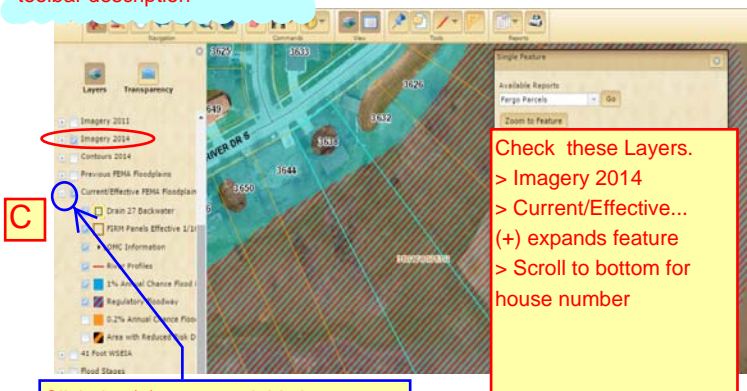
Click to search by  
address, owner, etc.

Click zoom to feature,  
then go to step "C" to  
add photo, etc.....

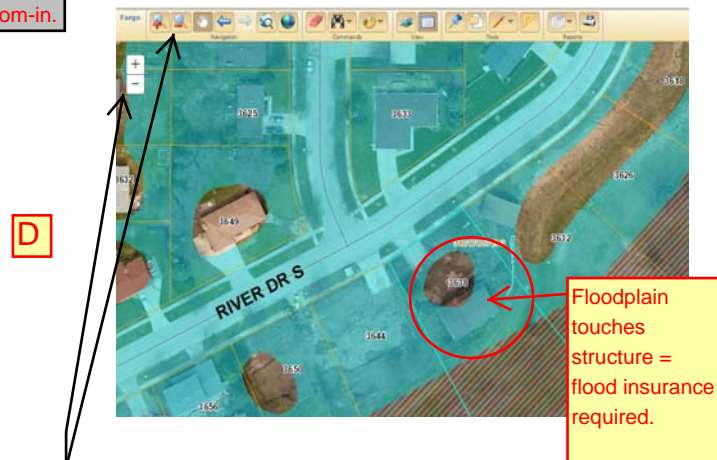


See page 2 for legend & toolbar description

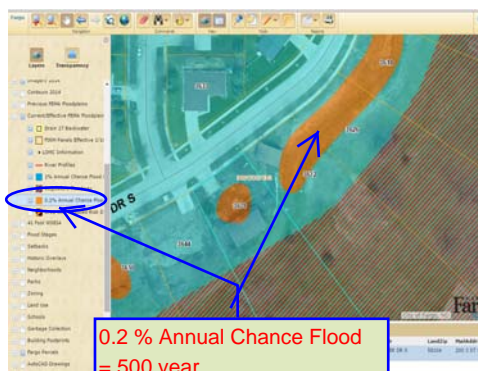
Some layers won't be visible until you zoom-in.



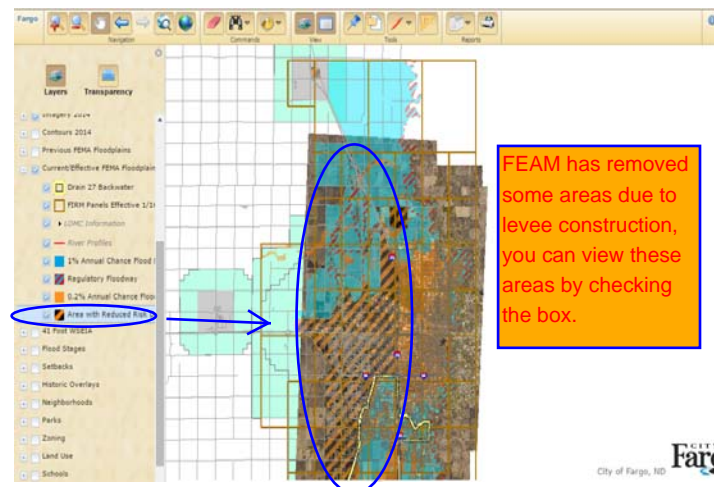
Click the (+) to expand this layer to view the color code (legend) and check items you wish to view. (some are pre-checked)



Zoom in & out (+/-) or on tool bar.



0.2 % Annual Chance Flood  
= 500 year  
0.2 is not regulated as it is  
"higher" than the blue, 0.1%  
and some areas have no color  
which means they are higher  
than either the 0.1 or 0.2%



FEAM has removed some areas due to levee construction, you can view these areas by checking the box.

Remember if any part of the blue touches the structure it is considered "in" the regulatory floodplain.





Tool Bar

Pan (move the map)

Erases selection

3 options to search

GPS

Hover cursor over any icon for description.

Returns to last view

4 ways to identify features

Zoom-in (out) by drawing a box

Zooms to selected spot / max extent

Opens 'layers' legend box

Check white box to view any of these layers on the map. The + sign means there are more options.

There are many options you can view in this software - please explore its capabilities.



100 Year = Regulated aka Special Flood Hazard Area Flood Insurance required area Zone A or High Risk

500 Year = not regulated

FEMA Accredited Levee Protection Areas

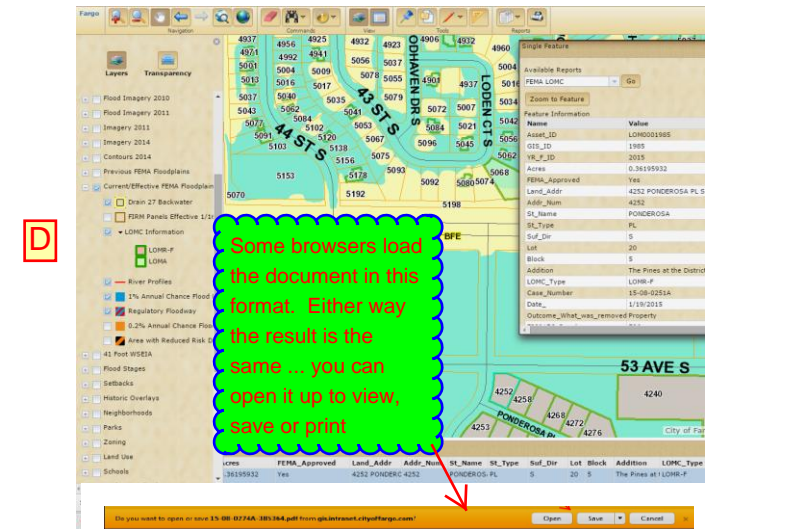
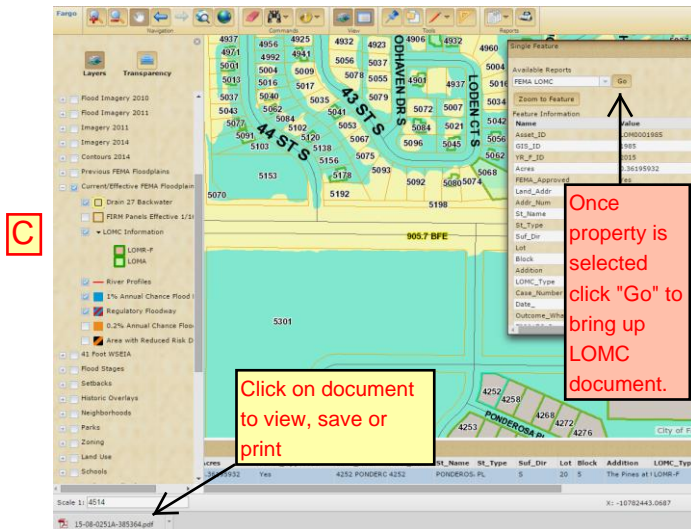
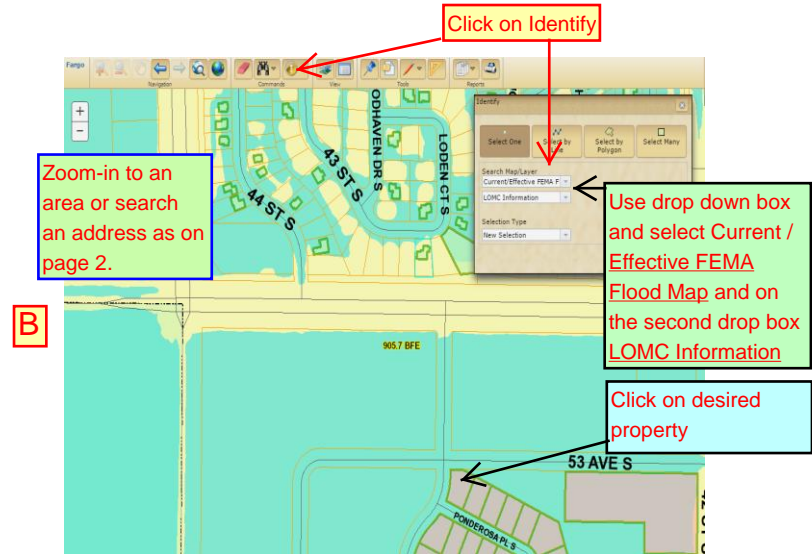
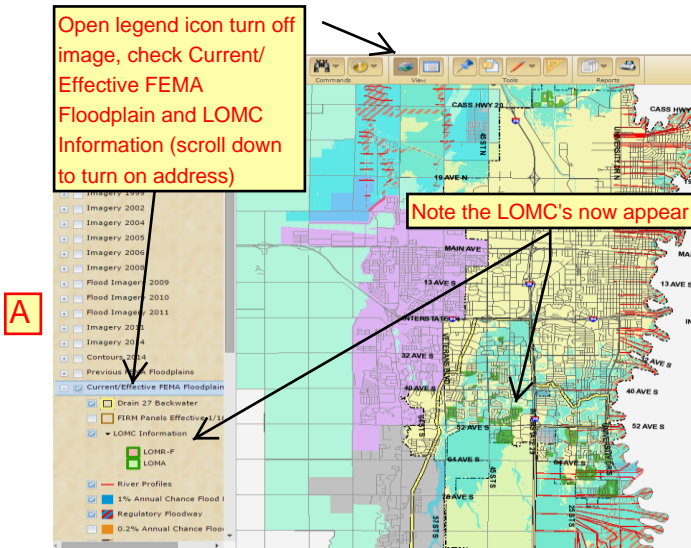
Click the arrow to see the LOMC type (color)

If the structure is touched by this color it is "in" the insurance required area.

The following LOMC information is also available from the FEMA Map Service Center ([msc.fema.gov](http://msc.fema.gov))

# Interactive GIS Instructions

## Page 4 Download a LOMC from the GIS Map



**E**

Page 1 of 12

Date: January 20, 2015 Case No.: 15-08-0251A LOMR-F

Management Agency

USED ON FILL

**DETERMINATION DOCUMENT (REMOVAL)**

**COMMUNITY AND MAP PANEL INFORMATION**

CITY OF FARGO, CASS COUNTY, NORTH DAKOTA

COMMUNITY NO.: 385364

AFFECTED MAP PANEL NUMBER: 38017C0786G

DATE: 1/16/2015

FLOODING SOURCE: RED RIVER OF THE NORTH

APPROXIMATE LATITUDE & LONGITUDE OF PROPERTY: 46.801, -96.855

SOURCE OF LAT & LONG: GOOGLE EARTH PRO

DATUM: NAD 83

**DETERMINATION**

LOT	BLOCK/SECTION	SUBDIVISION	STREET	OUTCOME WHAT IS REMOVED FROM THE SFHA	FLOOD ZONE	1% ANNUAL CHANCE FLOOD ELEVATION (NAVD 88)	LOWEST ADJACENT GRADE ELEVATION (NAVD 88)	LOWEST LOT ELEVATION (NAVD 88)
1	10	The Pines at the District Addition	4296 54th Avenue South	Portion of Property	X (shaded)	905.7 feet	--	905.8 feet

Pay attention to the number of pages as your address may be several pages into the document

Lender will need a complete copy of the "removal" or "determination" document.

Scroll through the document to find the exact property