

INDEX OF DRAWINGS	
NUMBER	NAME
GENERAL	
G100	COVER SHEET
G101	TITLE SHEET
ARCHITECTURAL	
A201	FIRST FLOOR PLAN
A202	SECOND FLOOR PLAN
ELECTRICAL	
E100	FIRST FLOOR ELECTRICAL DEMO.
E101	SECOND FLOOR ELECTRICAL DEMO.
E200	FIRST FLOOR ELECTRICAL PLAN
E201	SECOND FLOOR ELECTRICAL PLAN



JLG ARCHITECTS
FARGO PUBLIC LIBRARY SUNSHADES REPLACEMENT
101 4TH ST N, FARGO ND 58102

6

5

4

3

2

1

D

C

B

A

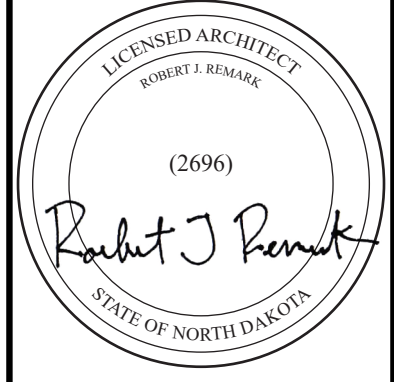
PROJECT GENERAL NOTES

- A. THE OWNER'S NORMAL OPERATIONS WILL BE CONTINUED DURING CONSTRUCTION. THE CONSTRUCTION SHALL NOT INTERFERE WITH THESE OPERATIONS IN ANY WAY WITHOUT THE OWNER'S EXPRESSED CONSENT.
- B. IT SHALL BE EACH TRADE CONTRACTORS RESPONSIBILITY TO VISIT THE SITE AND FAMILIARIZE HIMSELF/HERSELF WITH ALL EXISTING CONDITIONS. EACH CONTRACTOR SHALL TAKE ALL NECESSARY FIELD MEASUREMENTS AND OTHERWISE VERIFY ALL DIMENSIONS AND EXISTING CONSTRUCTION CONDITIONS INDICATED AND/OR SHOWN ON THE DRAWINGS. SHOULD ANY ERROR OR INCONSISTENCY EXIST, THE CONTRACTOR SHALL NOT PROCEED WITH THE WORK AFFECTED THEREBY UNTIL REPORTING THE SAME TO THE ARCHITECT AND THE OWNERS REPRESENTATIVE FOR CLARIFICATION AND/OR CORRECTION.
- C. DIMENSIONS FOLLOWED BY +/- SHALL BE REVIEWED AND ALL NECESSARY ADJUSTMENTS MADE PRIOR TO FABRICATION AND/OR INSTALLATION OF WORK. NOTIFY ARCHITECT/ENGINEER OF ANY DISCREPANCIES BEFORE PROCEEDING WITH THE WORK.
- D. ALL EXISTING CONSTRUCTION AND SURFACES WHICH ARE TO REMAIN BUT ARE AFFECTED BY THE WORK UNDER THIS CONTRACT SHALL BE RESTORED AND REFINISHED TO MATCH THE CONSTRUCTION, FINISH AND ALIGNMENT OF THE EXISTING ADJACENT CONSTRUCTION AND FINISHES.
- E. VERIFY QUANTITY, SIZE AND LOCATION OF ALL FLOOR, ROOF AND WALL OPENINGS FOR MECHANICAL AND ELECTRICAL WORK WITH THE APPROPRIATE TRADE. PROVIDE ALL OPENINGS SHOWN OR REQUIRED FOR COMPLETION OF WORK.
- F. COORDINATE SIZE AND LOCATION OF ALL ACCESS PANELS WITH APPROPRIATE TRADES. COORDINATE SIZE & LOCATION OF ALL HOUSE-KEEPING PADS AND/OR EQUIPMENT SUPPORTS WITH APPROPRIATE EQUIPMENT MANUFACTURER.
- G. PROVIDE FIRE RETARDANT WOOD BLOCKING AND/OR 18 GA METAL PLATES BETWEEN STUDS AT ALL LOCATIONS REQUIRING BLOCKING IN WALL.
- H. ALL WORK TO CONFORM TO THE REQUIREMENTS OF THE LOCAL AND STATE CODES.
- I. RELEVANT DIMENSIONS AND ELEVATIONS FOR EQUIPMENT INSTALLATIONS SHALL BE VERIFIED AGAINST MANUFACTURERS CERTIFIED EQUIPMENT DRAWINGS.
- J. CONTRACTOR SHALL PROVIDE TEMPORARY DUST PROOF PARTITIONS AS REQUIRED, OR WHERE REQUESTED BY OWNERS' REPRESENTATIVE. PARTITIONS SHALL BE FIRE RATED WHERE REQUIRED BY CODE HAVING JURISDICTION. ALL TEMPORARY PARTITIONS SHALL BE CONSTRUCTED IN A MANNER AND OF MATERIALS OFFERING ADEQUATE PROTECTION TO OWNER'S EQUIPMENT AND PERSONNEL.
- K. DO NOT SCALE DRAWINGS TO DETERMINE SIZES AND DIMENSIONS. USE FIGURED DIMENSIONS ONLY. DIMENSIONS ARE TO FINISHED FACE OF WALLS UNLESS OTHERWISE NOTED. ALL PERIMETER DIMENSIONS ARE FROM FACE OF PERIMETER WALLS.
- L. ALL PENETRATIONS TO FLOORS, CEILINGS AND WALLS SHALL BE SEALED AND FIRE STOPPED TO A FIRE RATING EQUAL TO THE CONSTRUCTION BEING PENETRATED.
- M. NEW WORK SHALL ALIGN WITH AND MATCH EXISTING WORK UNLESS NOTED OTHERWISE.



214 Broadway
 Fargo, ND 58102
 phone 701.364.0237

www.jlgarchitects.com
 copyright © 2023



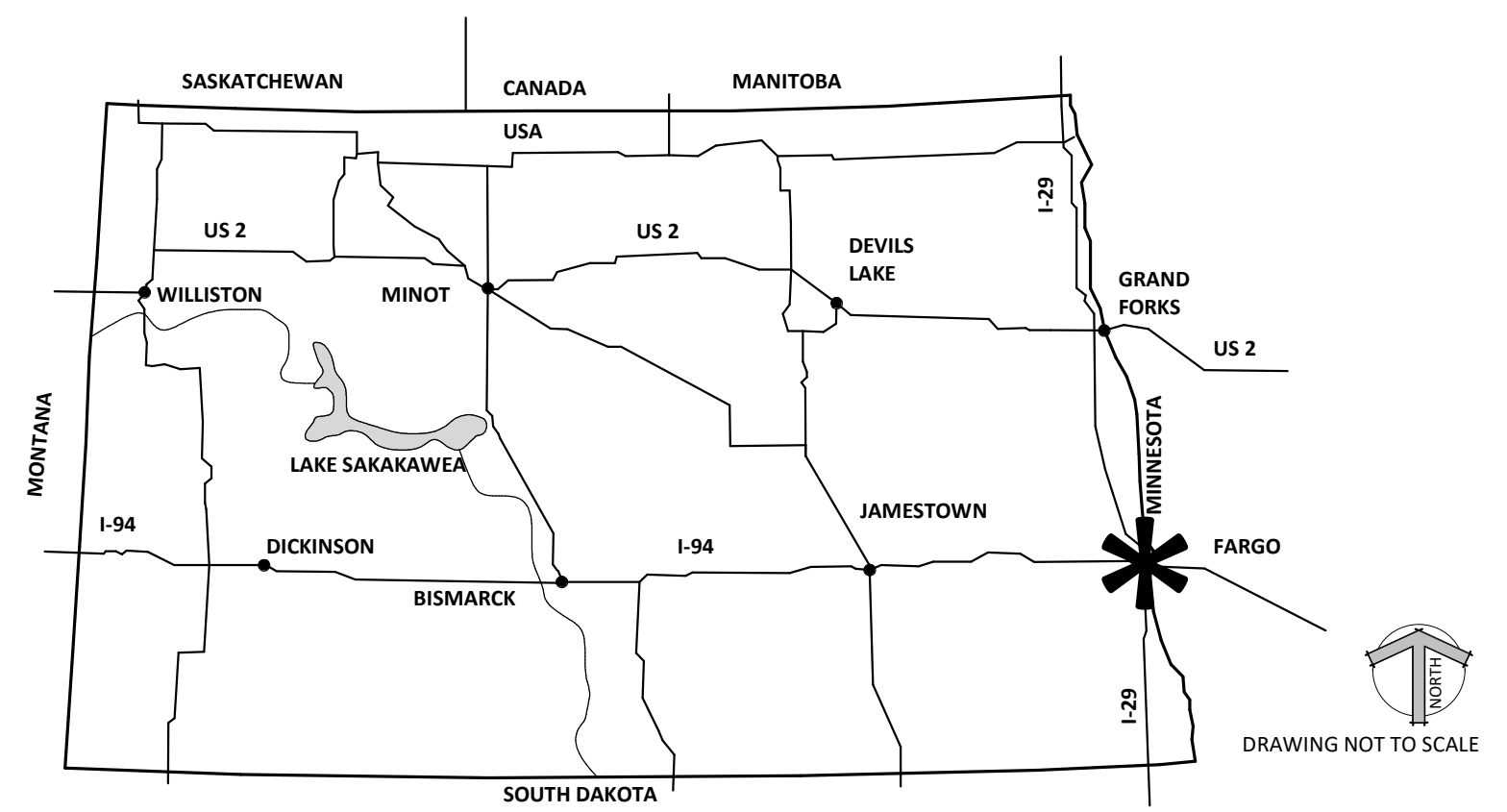
05.11.2023

REVISION SCHEDULE

NO.	DESCRIPTION	DATE

JLG ARCHITECTS
FARGO PUBLIC LIBRARY SUNSHADES REPLACEMENT
 101 4TH ST N, FARGO ND 58102

DATE	4/28/2023
PHASE	CONSTRUCTION DOCUMENTS
PROJECT	23085
SHEET	G101
TITLE SHEET	



PROJECT VICINITY MAP - ND

SYMBOLS LEGEND

ROOM IDENTIFICATION TAG

SAMPLE ROOM NAME → ROOM NAME
 101 → ROOM NUMBER
 150 SF

REVISION DELTA AND CLOUD

△ → REVISION TAG
 [Red Cloud] → REVISION CLOUD

DRAWING IDENTIFICATION

4A → DRAWING NUMBER
 X.XX → DRAWING NAME
 SCALE: 1/8" = 1'-0" → DRAWING SCALE
 → SHEET NUMBER

NORTH ARROW

PLAN → PLAN VIEW
 ELEVATION → ELEVATION VIEW

SHEET KEYNOTES

XX → KEYNOTE

DESIGN TEAM

Architect

JLG Architects
 214 Broadway
 Fargo ND 58102
 P: 701.922.4025

Contact: **Deborah Wendel Daub**,
 AIA, LEED AP, Project Manager

Electrical Engineer

MBN Engineering
 503 7th St N, #200
 Fargo, ND 58102
 P: 701-478-3314

Contact: **Michael A. Berger**,
 PE, LEED AP BD+C

4/28/2023 3:23:11 PM

6

5

4

3

2

1



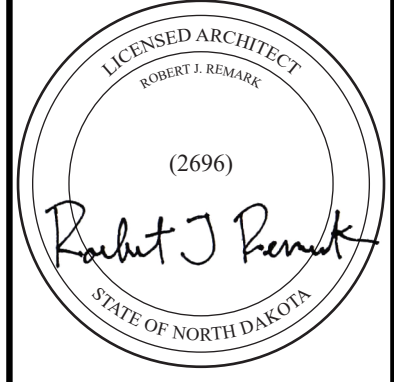
KEYNOTES - FLOOR PLAN		
NO	NOTE	REV.
S1	<SHADE-1> SEE SPEC	
S2	<SHADE-2> SEE SPEC	

KEYNOTES - DEMOLITION		
NO	NOTE	REV.
1	REMOVE SHADES, PATCH AND PAINT AS NEEDED. SEE SPEC. FOR FURTHER DEMO INSTRUCTIONS.	
2	REMOVE SHADES, NO NEW SHADES IN THIS LOCATION. PATCH AND PAINT AS NEEDED. SEE SPEC. FOR FURTHER DEMO INSTRUCTIONS.	



214 Broadway
 Fargo, ND 58102
 phone 701.364.0237

www.jlgarchitects.com
 copyright © 2023



05.11.2023

REVISION SCHEDULE		
NO.	DESCRIPTION	DATE

JLG ARCHITECTS
FARGO PUBLIC LIBRARY SUNSHADES REPLACEMENT
 101 4TH ST N, FARGO ND 58102

DATE
4/28/2023

PHASE
CONSTRUCTION DOCUMENTS

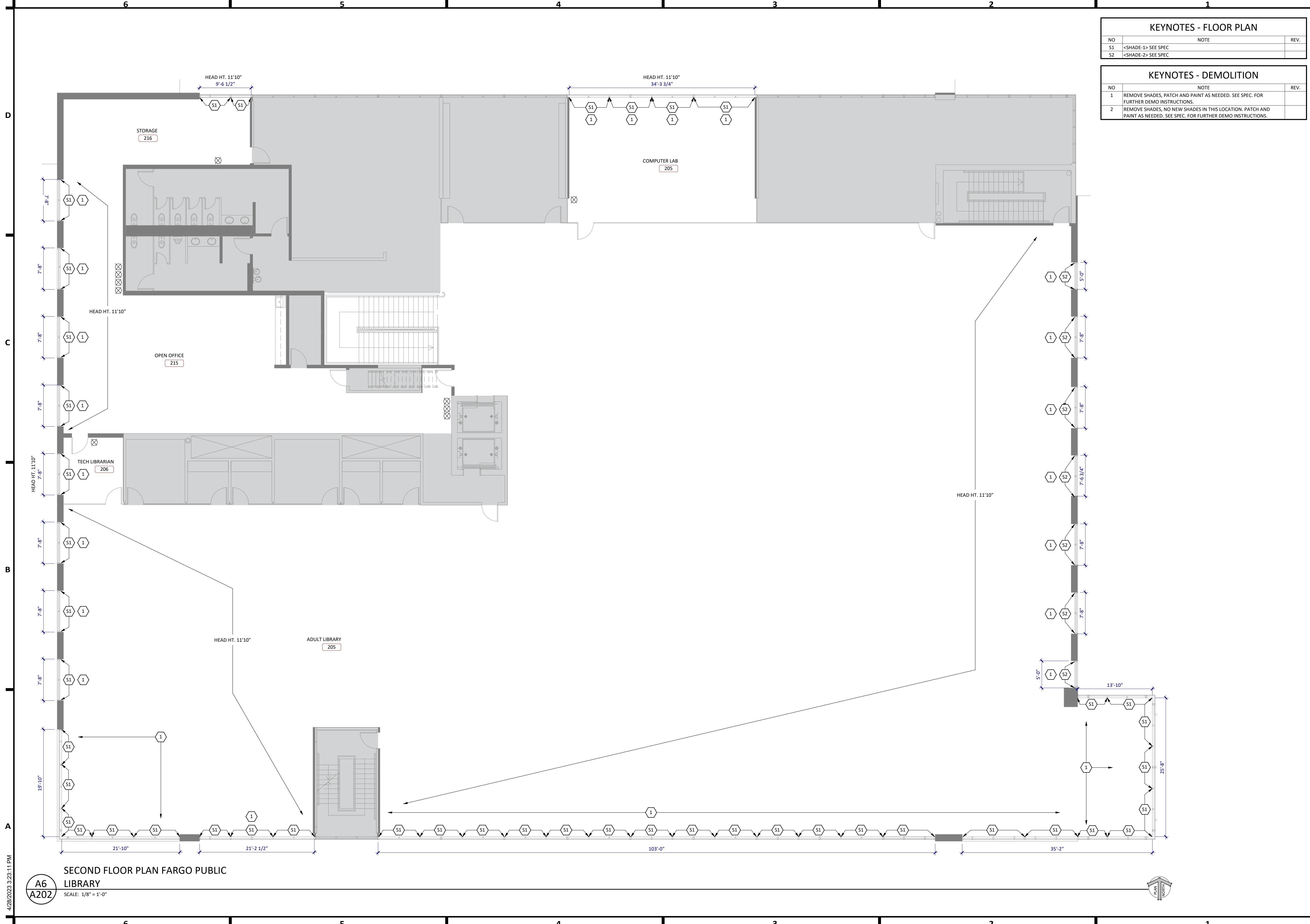
PROJECT
23085

SHEET
A201
 FIRST FLOOR PLAN

4/28/2023 3:23:10 PM

A6
A201
 SCALE: 1/8" = 1'-0"

FIRST FLOOR PLAN FARGO PUBLIC LIBRARY



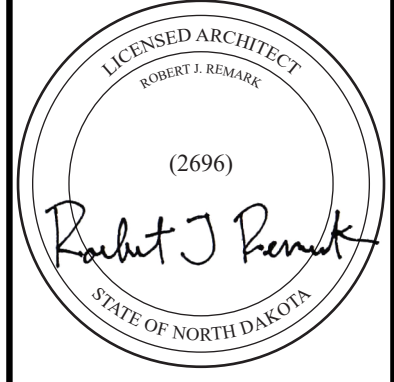
KEYNOTES - FLOOR PLAN		
NO	NOTE	REV.
S1	<SHADE-1> SEE SPEC	
S2	<SHADE-2> SEE SPEC	

KEYNOTES - DEMOLITION		
NO	NOTE	REV.
1	REMOVE SHADES, PATCH AND PAINT AS NEEDED. SEE SPEC. FOR FURTHER DEMO INSTRUCTIONS.	
2	REMOVE SHADES, NO NEW SHADES IN THIS LOCATION. PATCH AND PAINT AS NEEDED. SEE SPEC. FOR FURTHER DEMO INSTRUCTIONS.	



214 Broadway
 Fargo, ND 58102
 phone 701.364.0237

www.jlgarchitects.com
 copyright © 2023



05.11.2023

REVISION SCHEDULE		
NO.	DESCRIPTION	DATE

JLG ARCHITECTS
**FARGO PUBLIC LIBRARY SUNSHADES
 REPLACEMENT**
 101 4TH ST N, FARGO ND 58102

DATE	4/28/2023
PHASE	CONSTRUCTION DOCUMENTS
PROJECT	23085
SHEET	A202
SECOND FLOOR PLAN	

4/28/2023 3:23:11 PM

A6
A202
 SCALE: 1/8" = 1'-0"

SECOND FLOOR PLAN FARGO PUBLIC LIBRARY

REVISION SCHEDULE		
NO.	DESCRIPTION	DATE

JLG ARCHITECTS
FARGO PUBLIC LIBRARY SUNSHADES
FRAGO, ND

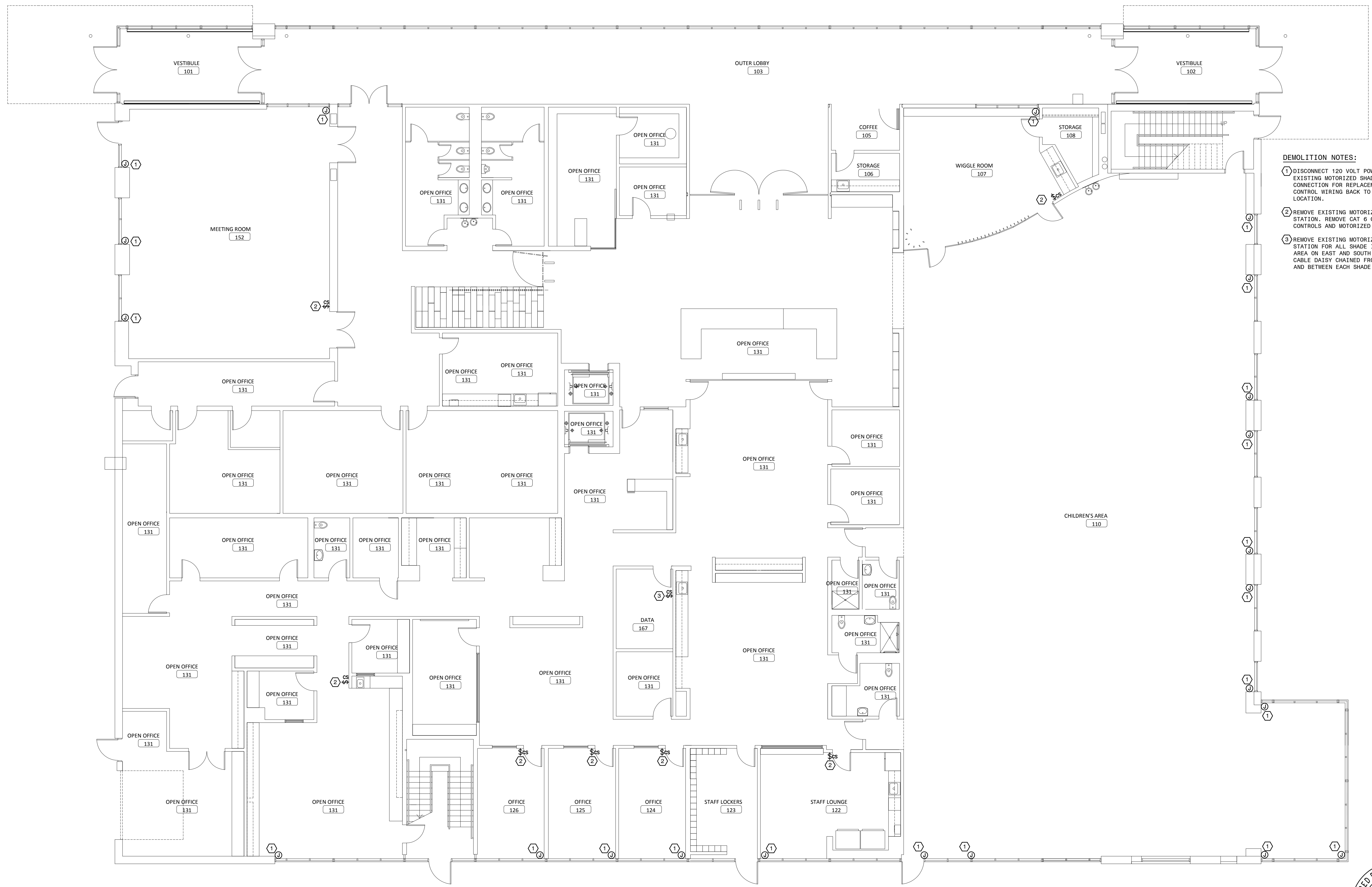
DATE
5/11/2023

PHASE
CONSTRUCTION DOCUMENTS

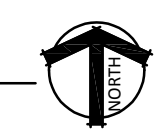
PROJECT
23085

SHEET
E100
FIRST FLOOR
ELECTRICAL DEMO.

- DEMOLITION NOTES:**
- DISCONNECT 120 VOLT POWER CONNECTION TO EXISTING MOTORIZED SHADES. SALVAGE CONNECTION FOR REPLACEMENT SHADE. REMOVE CONTROL WIRING BACK TO EXISTING CONTROL LOCATION.
 - REMOVE EXISTING MOTORIZED SHADE CONTROL STATION. REMOVE CAT 6 CONTROL CABLE BETWEEN CONTROLS AND MOTORIZED SHADE IN ROOM.
 - REMOVE EXISTING MOTORIZED SHADE CONTROL STATION FOR ALL SHADE IN THE CHILDREN'S AREA ON EAST AND SOUTH WALLS. REMOVE CAT 6 CABLE DAISY CHAINED FROM CONTROL STATION AND BETWEEN EACH SHADE.



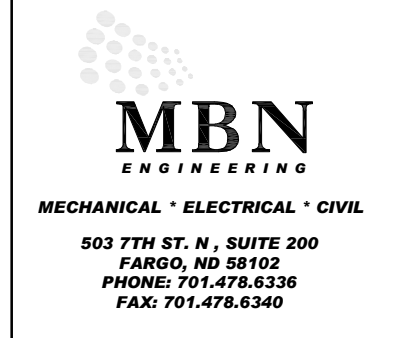
1 FIRST FLOOR ELECTRICAL DEMOLITION PLAN
E100





710 South 2nd St. 8th Floor
 Minneapolis, MN 55401
 phone 612.746.4260

www.jlgarchitects.com
 copyright © 2023



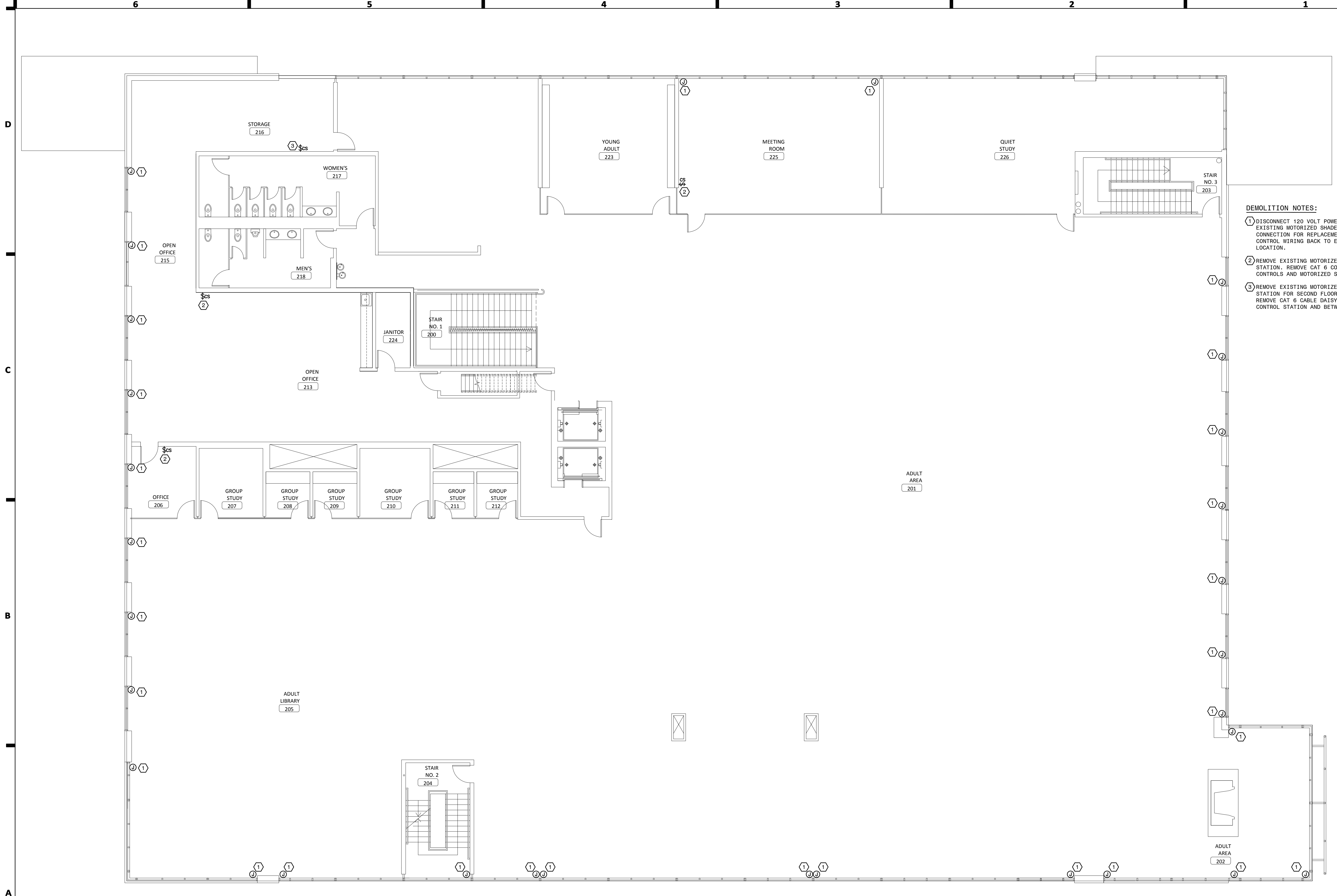
MECHANICAL • ELECTRICAL • CIVIL
 503 7TH ST. N. SUITE 300
 FARGO, ND 58102
 PHONE: 701.478.8336
 FAX: 701.478.6340

REVISION SCHEDULE		
NO.	DESCRIPTION	DATE

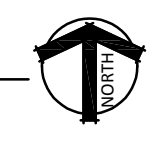
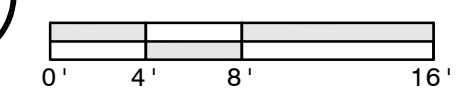
JLG ARCHITECTS
FARGO PUBLIC LIBRARY SUNSHADES
 FARGO, ND

DATE	5/11/2023
PHASE	CONSTRUCTION DOCUMENTS
PROJECT	23085
SHEET	E101
SECOND FLOOR ELECTRICAL DEMO.	

- DEMOLITION NOTES:**
- DISCONNECT 120 VOLT POWER CONNECTION TO EXISTING MOTORIZED SHADES. SALVAGE CONNECTION FOR REPLACEMENT SHADE. REMOVE CONTROL WIRING BACK TO EXISTING CONTROL LOCATION.
 - REMOVE EXISTING MOTORIZED SHADE CONTROL STATION. REMOVE CAT 6 CONTROL CABLE BETWEEN CONTROLS AND MOTORIZED SHADE IN ROOM.
 - REMOVE EXISTING MOTORIZED SHADE CONTROL STATION FOR SECOND FLOOR OPEN STACK AREAS. REMOVE CAT 6 CABLE DAISY CHAINED FROM CONTROL STATION AND BETWEEN EACH SHADE.



1 SECOND FLOOR ELECTRICAL DEMOLITION PLAN
E101



REVISION SCHEDULE		
NO.	DESCRIPTION	DATE
1	RECONNECT NEW MOTORIZED SHADE TO 120 VOLT CIRCUIT SALVAGED AFTER REMOVAL OF EXISTING SHADE. PROVIDE ADDITIONAL CONNECTIONS OR ADJUST CONNECTION LOCATION PER NEW SHADE MANUFACTURER REQUIREMENTS.	
2	PROVIDE CAT 6 CABLE OR CONTROL CABLE PER SHADE MANUFACTURER BETWEEN MOTOR CONTROLLER AT EACH SHADE MOTOR. VERIFY EXACT QUANTITY OF MOTOR CONTROLLERS WITH SHADE SUPPLIER.	
3	INSTALL AND CONNECTION SYSTEM NETWORK DEVICE CONNECTOR PER MANUFACTURER'S INSTRUCTIONS.	
4	INSTALL NEW MOTORIZED SHADE CONTROL STATION FURNISHED BY SUPPLIER. THIS STATION WILL HAVE TWO BUTTONS TO CONTROL SOUTH AND EAST SHADES IN THE CHILDREN'S AREA 110 SEPARATELY.	
5	INSTALL NEW MOTORIZED SHADE CONTROLLER FOR LOCAL CONTROL OF SHADES IN THIS ROOM FURNISHED BY SHADE SUPPLIER.	

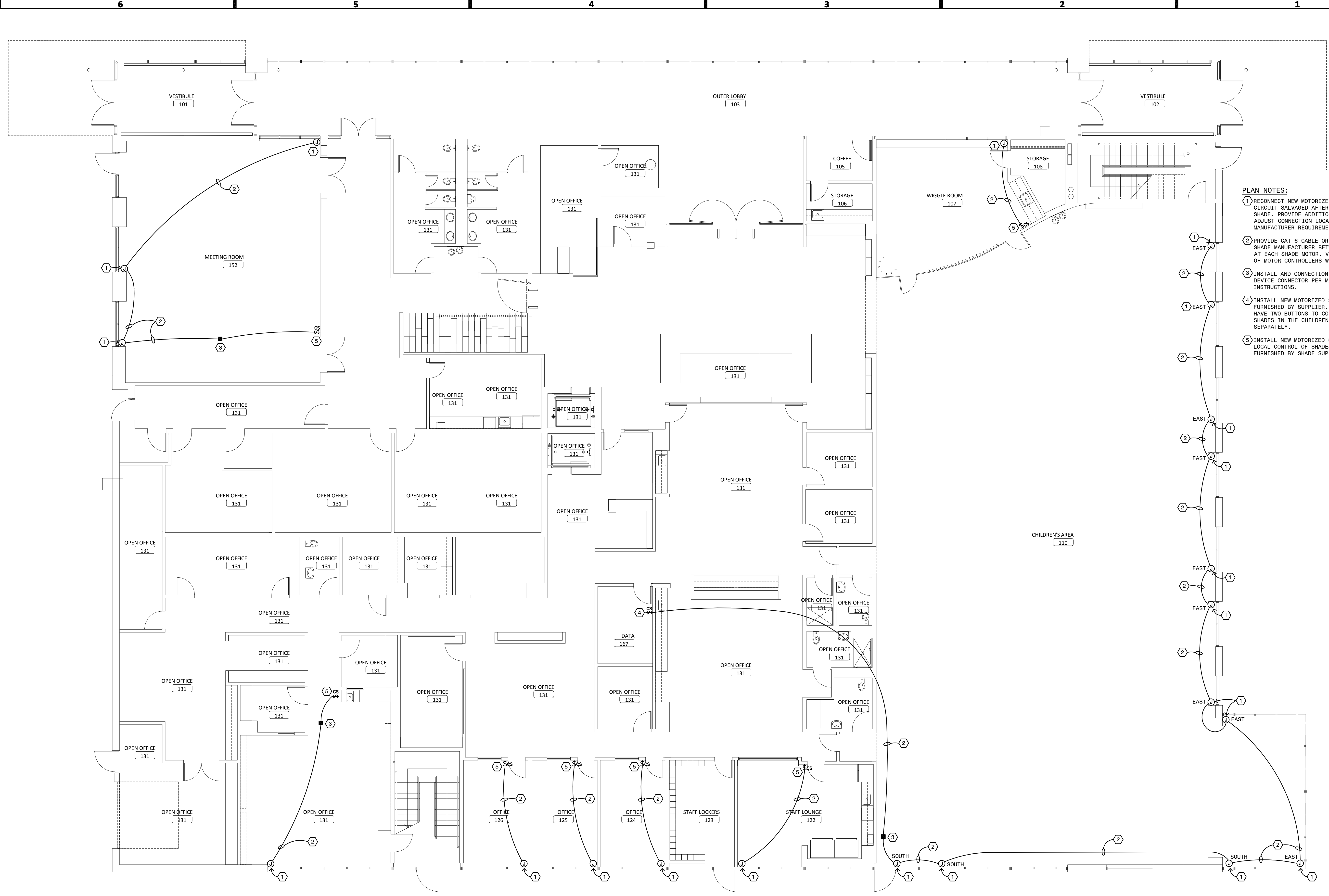
JLG ARCHITECTS
FARGO PUBLIC LIBRARY SUNSHADES
FRAGO, ND

DATE	5/11/2023
PHASE	CONSTRUCTION DOCUMENTS
PROJECT	23085

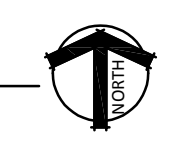
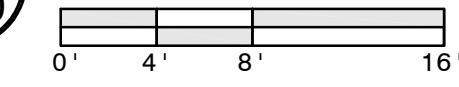
SHEET	E200
FIRST FLOOR ELECTRICAL PLAN	

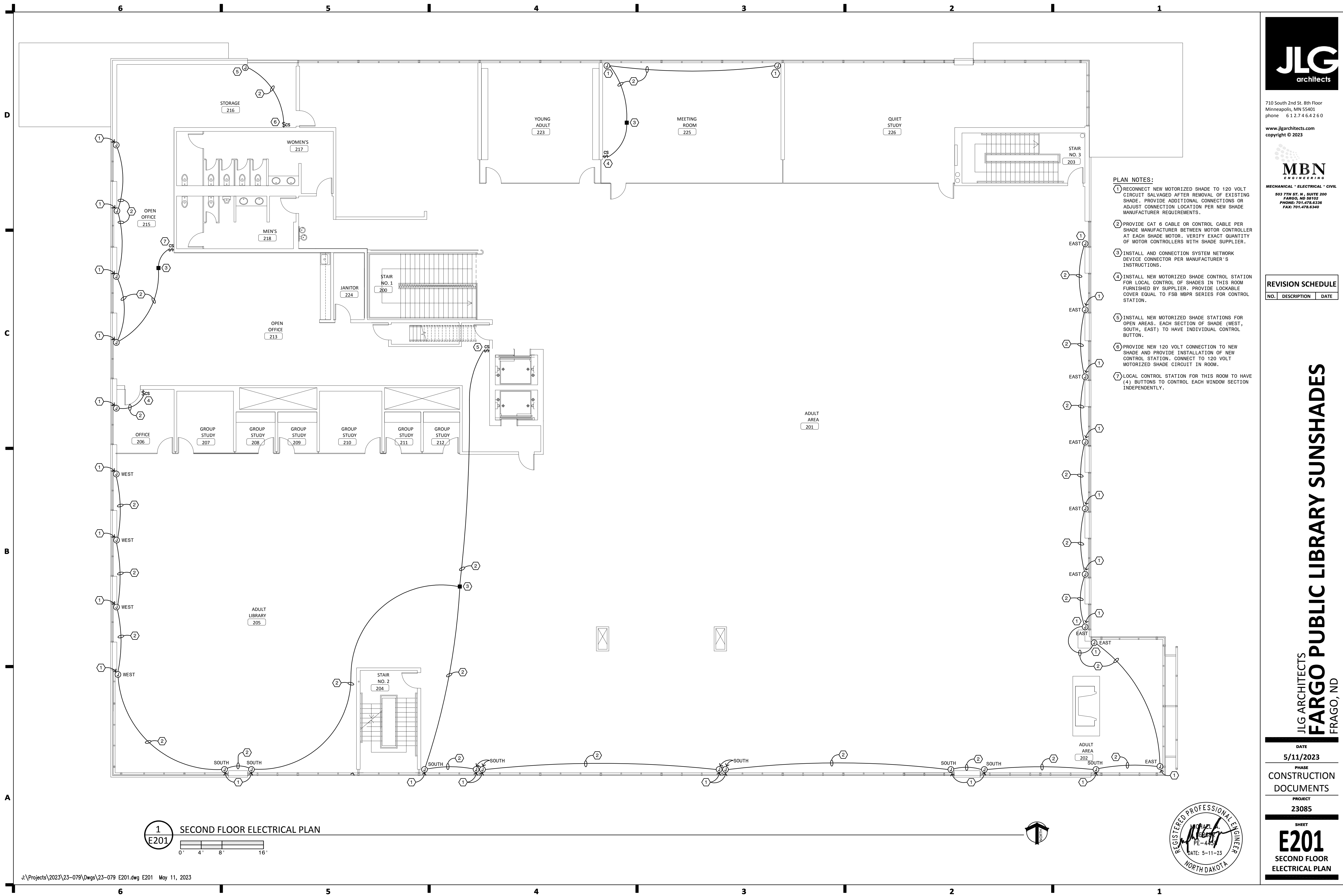
PLAN NOTES:

- RECONNECT NEW MOTORIZED SHADE TO 120 VOLT CIRCUIT SALVAGED AFTER REMOVAL OF EXISTING SHADE. PROVIDE ADDITIONAL CONNECTIONS OR ADJUST CONNECTION LOCATION PER NEW SHADE MANUFACTURER REQUIREMENTS.
- PROVIDE CAT 6 CABLE OR CONTROL CABLE PER SHADE MANUFACTURER BETWEEN MOTOR CONTROLLER AT EACH SHADE MOTOR. VERIFY EXACT QUANTITY OF MOTOR CONTROLLERS WITH SHADE SUPPLIER.
- INSTALL AND CONNECTION SYSTEM NETWORK DEVICE CONNECTOR PER MANUFACTURER'S INSTRUCTIONS.
- INSTALL NEW MOTORIZED SHADE CONTROL STATION FURNISHED BY SUPPLIER. THIS STATION WILL HAVE TWO BUTTONS TO CONTROL SOUTH AND EAST SHADES IN THE CHILDREN'S AREA 110 SEPARATELY.
- INSTALL NEW MOTORIZED SHADE CONTROLLER FOR LOCAL CONTROL OF SHADES IN THIS ROOM FURNISHED BY SHADE SUPPLIER.



1 FIRST FLOOR ELECTRICAL PLAN
E200





- PLAN NOTES:**
- 1 RECONNECT NEW MOTORIZED SHADE TO 120 VOLT CIRCUIT SALVAGED AFTER REMOVAL OF EXISTING SHADE. PROVIDE ADDITIONAL CONNECTIONS OR ADJUST CONNECTION LOCATION PER NEW SHADE MANUFACTURER REQUIREMENTS.
 - 2 PROVIDE CAT 6 CABLE OR CONTROL CABLE PER SHADE MANUFACTURER BETWEEN MOTOR CONTROLLER AT EACH SHADE MOTOR. VERIFY EXACT QUANTITY OF MOTOR CONTROLLERS WITH SHADE SUPPLIER.
 - 3 INSTALL AND CONNECTION SYSTEM NETWORK DEVICE CONNECTOR PER MANUFACTURER'S INSTRUCTIONS.
 - 4 INSTALL NEW MOTORIZED SHADE CONTROL STATION FOR LOCAL CONTROL OF SHADES IN THIS ROOM FURNISHED BY SUPPLIER. PROVIDE LOCKABLE COVER EQUAL TO FSB WBPR SERIES FOR CONTROL STATION.
 - 5 INSTALL NEW MOTORIZED SHADE STATIONS FOR OPEN AREAS. EACH SECTION OF SHADE (WEST, SOUTH, EAST) TO HAVE INDIVIDUAL CONTROL BUTTON.
 - 6 PROVIDE NEW 120 VOLT CONNECTION TO NEW SHADE AND PROVIDE INSTALLATION OF NEW CONTROL STATION. CONNECT TO 120 VOLT MOTORIZED SHADE CIRCUIT IN ROOM.
 - 7 LOCAL CONTROL STATION FOR THIS ROOM TO HAVE (4) BUTTONS TO CONTROL EACH WINDOW SECTION INDEPENDENTLY.

REVISION SCHEDULE		
NO.	DESCRIPTION	DATE

1
E201 SECOND FLOOR ELECTRICAL PLAN



710 South 2nd St. 8th Floor
 Minneapolis, MN 55401
 phone 612.746.4260
 www.jlgarchitects.com
 copyright © 2023



JLG ARCHITECTS
FARGO PUBLIC LIBRARY SUNSHADES
 FARGO, ND

DATE	5/11/2023
PHASE	CONSTRUCTION DOCUMENTS
PROJECT	23085
SHEET	E201
SECOND FLOOR ELECTRICAL PLAN	