

INFORMATIONAL MEETING



BR-20-E1

17TH ST S FROM 21ST AVE S TO 25TH AVE S
25TH AVE S FROM 18TH ST S TO 14TH ST S

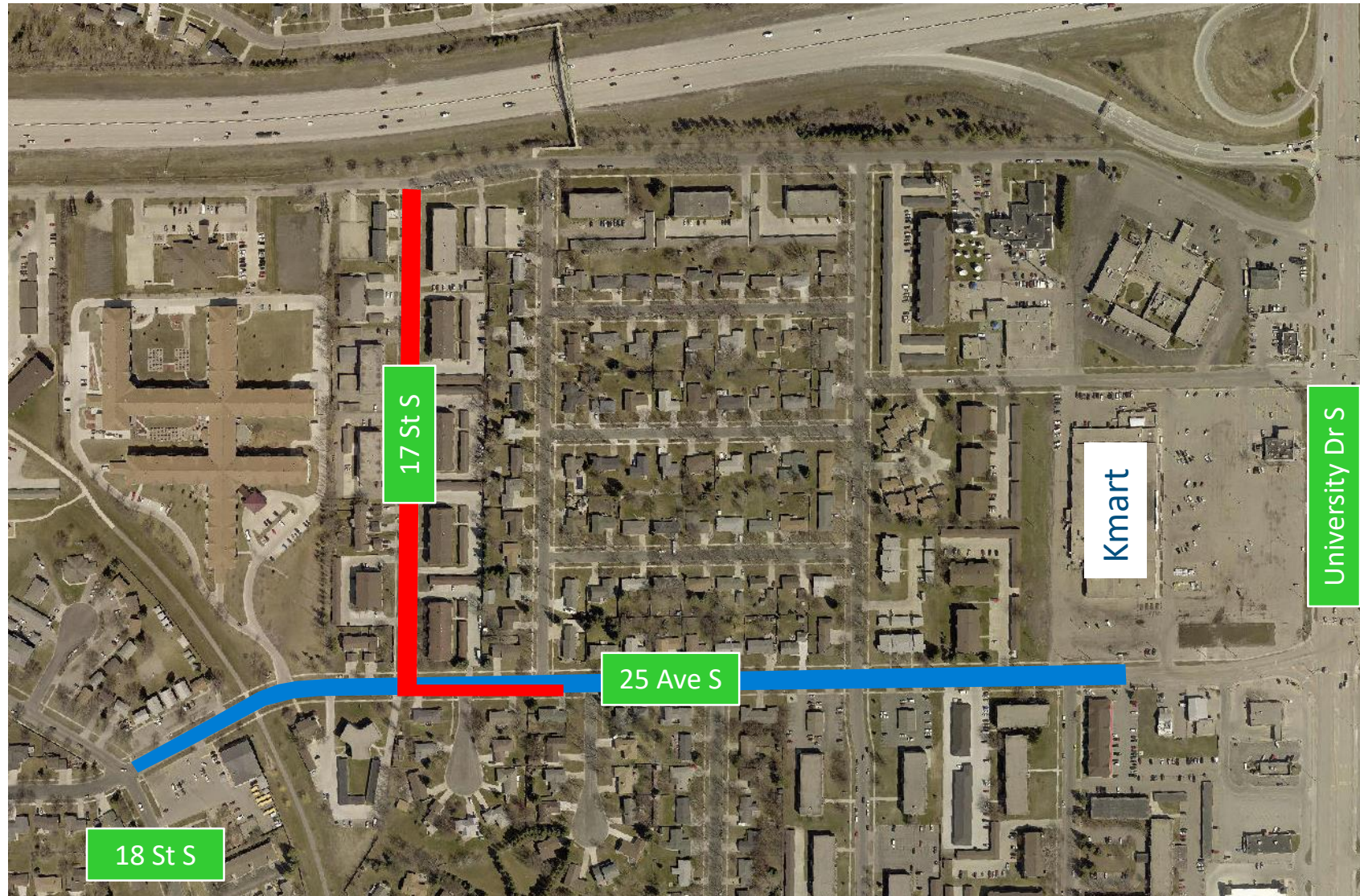
AGENDA

- Staff Introduction
- Project Overview
 - Location
 - Description
 - Timing/Duration
 - Details
 - Cost and Funding
- Special Assessments
- Questions

STAFF INTRODUCTION

- Aaron Edgar – Project Manager
- Dan Eberhardt – Special Assessment Coordinator
- Doug Durgin – Special Assessment Manager
- Tom Knakmuhs – Assistant City Engineer
- Brenda Derrig – City Engineer

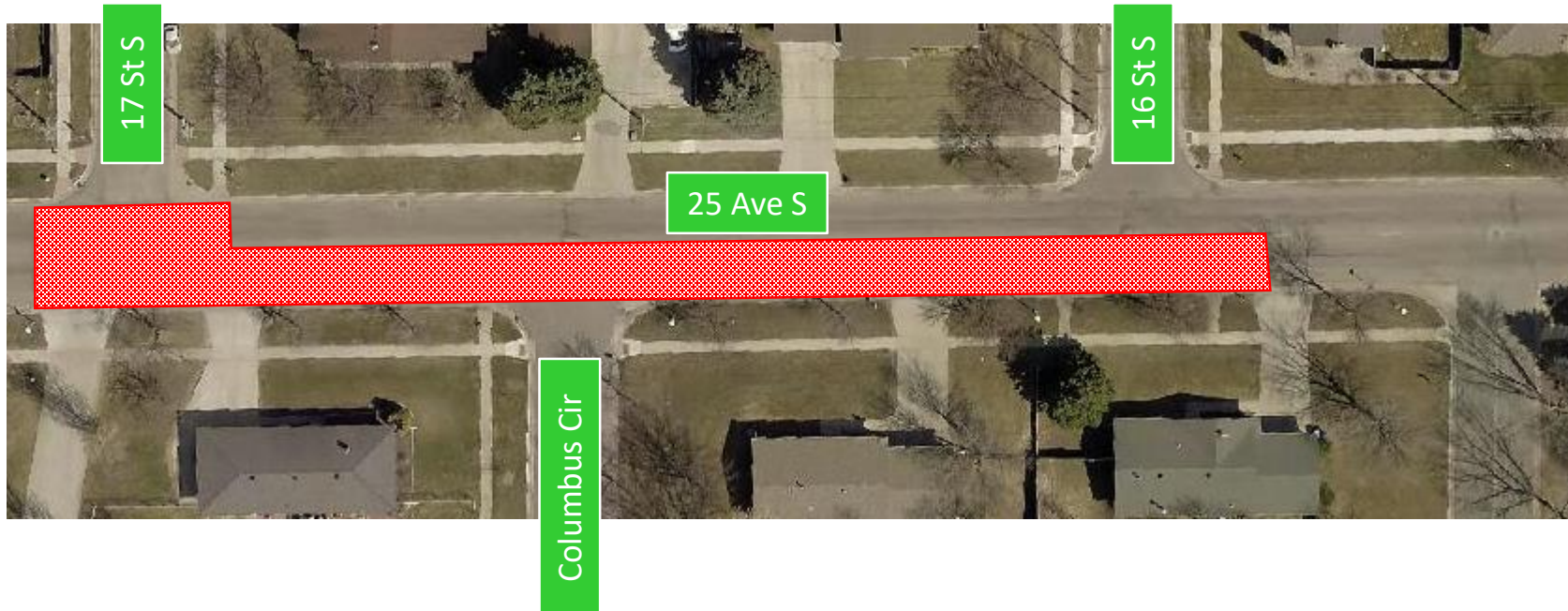
PROJECT LOCATION



-  Mill and Overlay
-  Street Recon

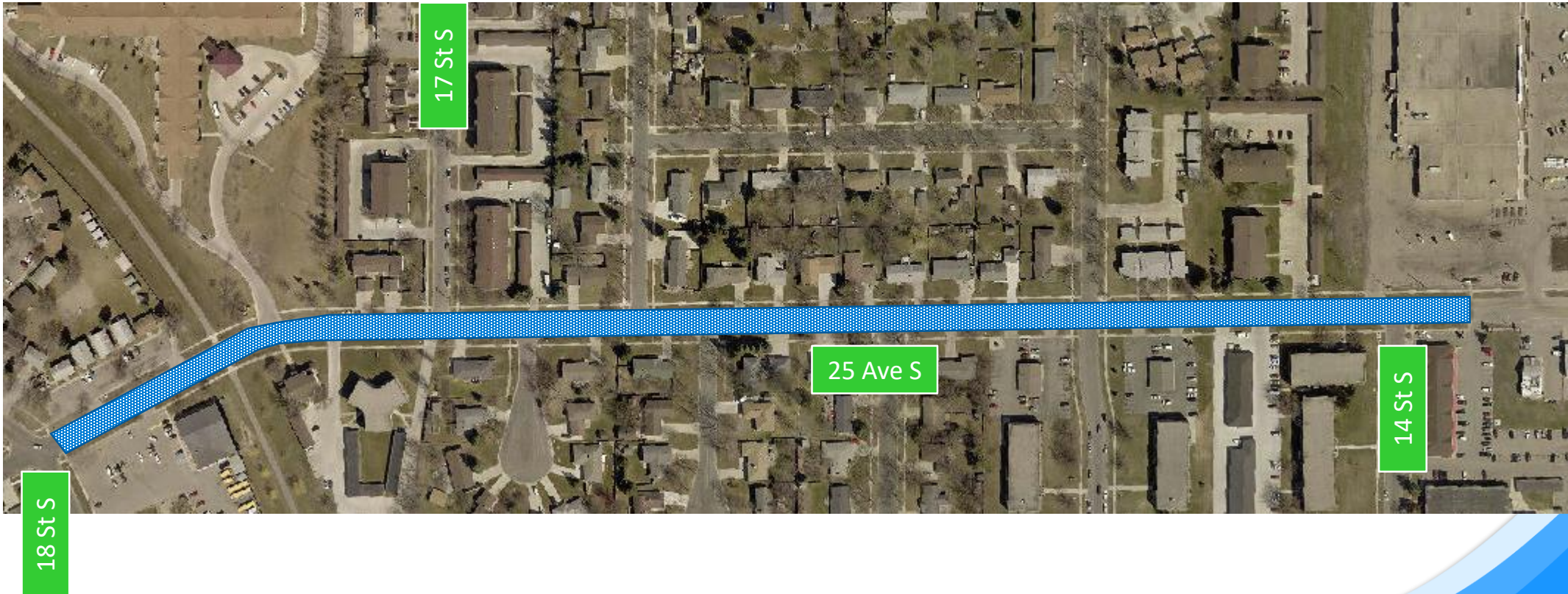
PROJECT DESCRIPTION

- 25th Ave S from 17th St S to 16th St S
 - Partial roadway reconstruction to accommodate storm sewer installation

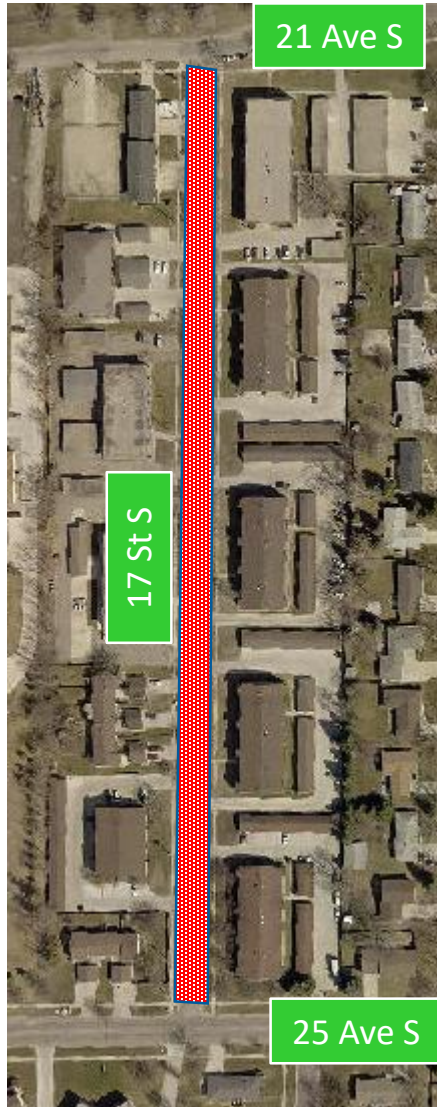


PROJECT DESCRIPTION

- 25th Ave S from 18th St S to 14th St S
 - Mill and Overlay to improve the ride quality and extend the life of the pavement



PROJECT DESCRIPTION



- 17th St S from 25th Ave S to 21st Ave S
 - Full roadway reconstruction including:
 - Water Main
 - Water Services (to curb stop)
 - Sewer Services (to 5' behind curb)
 - Driveway Approaches (to sidewalk)
 - Sidewalk repairs, as needed
 - Streetlights
 - Storm Sewer

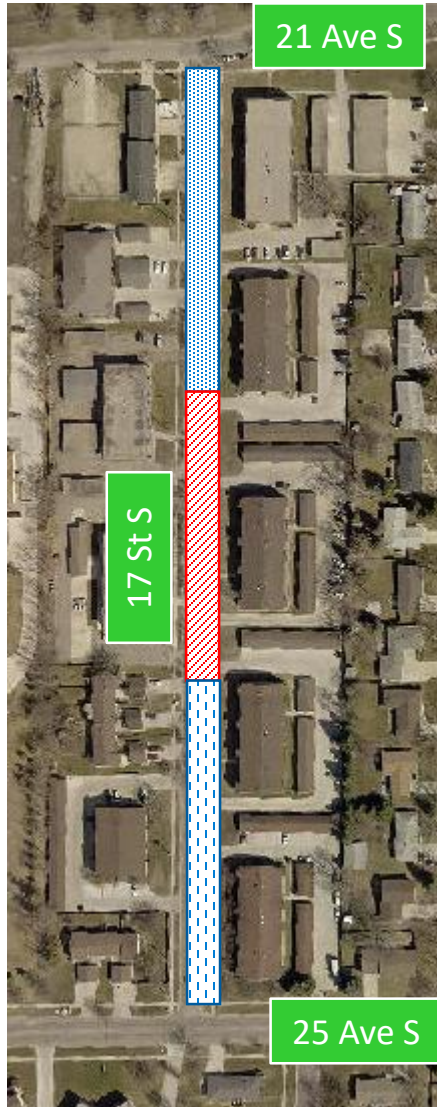
PROJECT TIMING AND DURATION

- Bid Date:
 - February 19, 2020
- Start Date:
 - To Be Determined, but likely May of 2020
- Completion Date:
 - Late September of 2020

PROJECT TIMING AND DURATION

- 25th Ave Reconstruction
 - Roadway can be closed for up to 14 consecutive days
 - Access to Columbus Circle can be closed up to 3 times for a maximum of 8 hours each time. All other times access must be maintained.
- 25th Ave Mill and Overlay
 - Roadway must remain open at all times
 - Contractor may choose to use flaggers
 - Roadway must be paved within 14 days of milling the roadway surface

PROJECT TIMING AND DURATION



- 17th St Reconstruction
 - Split into 3 phases
 - Each phase is limited to 35 days
 - Work on phases cannot overlap
 - Goal of phases is to minimize impact and maximize available on-street parking for those that are impacted

PROJECT DETAILS

- Contractor must maintain access for garbage/recycling pickup or the Contractor must pickup garbage/recycling
- Pedestrian access must be maintained on hard surface (concrete, asphalt, or compacted gravel)
- Temporary water pipes will be installed to maintain water service
- Temporary mailboxes will be placed at the intersection of 17th St/21st Ave for 17th St residents
- Driveways may be widened (if it complies with City Ordinance)
 - Forms are available
- 25 new trees will be installed along 17th St
- Boulevards will be graded and seeded
 - Once boulevards are established (about 70%), it becomes the property owner's responsibility

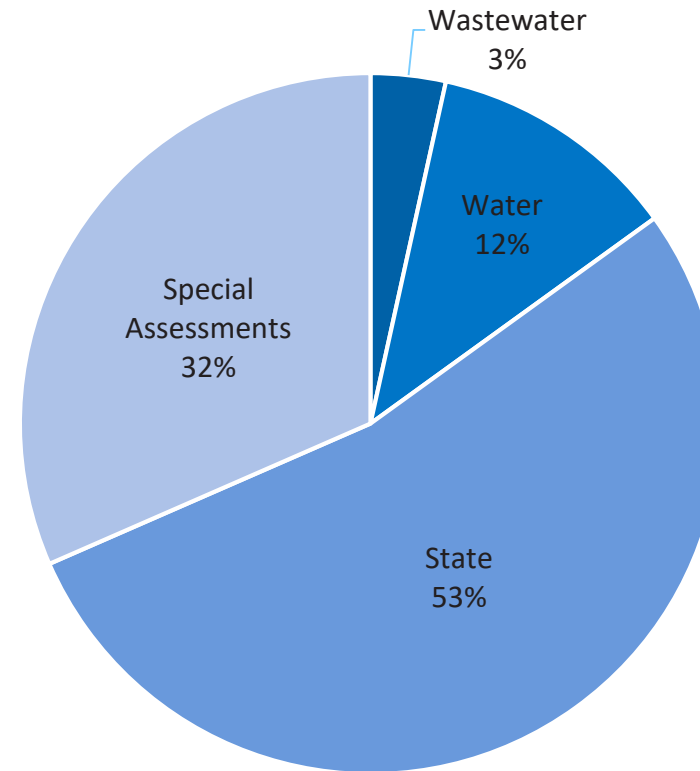


PROJECT COST

- Estimated Cost of Construction: \$1,445,300
- Fees and Contingency:
 - 10% Engineering Fee
 - 4% Admin Fee
 - 3% Legal Fee
 - 4% Interest Fee
 - 10% Contingency
- Cost with Fees and Contingency: \$1,893,343

PROJECT FUNDING

- Cost with Fees and Contingency: \$1,893,343
- Funding breakdown:
 - Wastewater Utility: \$65,500
 - Water Utility: \$219,251
 - State Funds: \$1,011,133
 - Special Assessments: \$597,459



SPECIAL ASSESSMENTS

- Water Main (including Water Service) Replacement
 - Capped at \$40 per front foot
- Sanitary Sewer Service Replacement
 - No Assessment
- Storm Sewer
 - Based on location and size of lot
- Street Lights
 - No Assessment

SPECIAL ASSESSMENTS

- Mill and Overlay:
 - Spread to a wider area along 25th Ave
 - Based on location and front footage
- 25th St Reconstruction:
 - No Assessment

SPECIAL ASSESSMENTS

- 17th St Reconstruction:
 - Spread to only those properties that directly front 17th St

| Category | Cost per Front Foot |
|-----------------------------|---------------------|
| Single Family | \$85 |
| MR Tier 2 (4 to 12 units): | \$130 |
| MR Tier 3 (13 to 36 units): | \$170 |

QUESTIONS?

- Project Questions:
 - Aaron Edgar – Project Manager
 - AEdgar@fargond.gov
 - 701-730-8674 (cell)
- Special Assessment Questions:
 - Dan Eberhardt – Special Assessment Coordinator
 - Deberhardt@fargond.gov
 - 701-241-1332 (office)
 - Doug Durgin – Special Assessment Manager
 - Ddurgin@fargond.gov
 - 701-476-6718 (office)