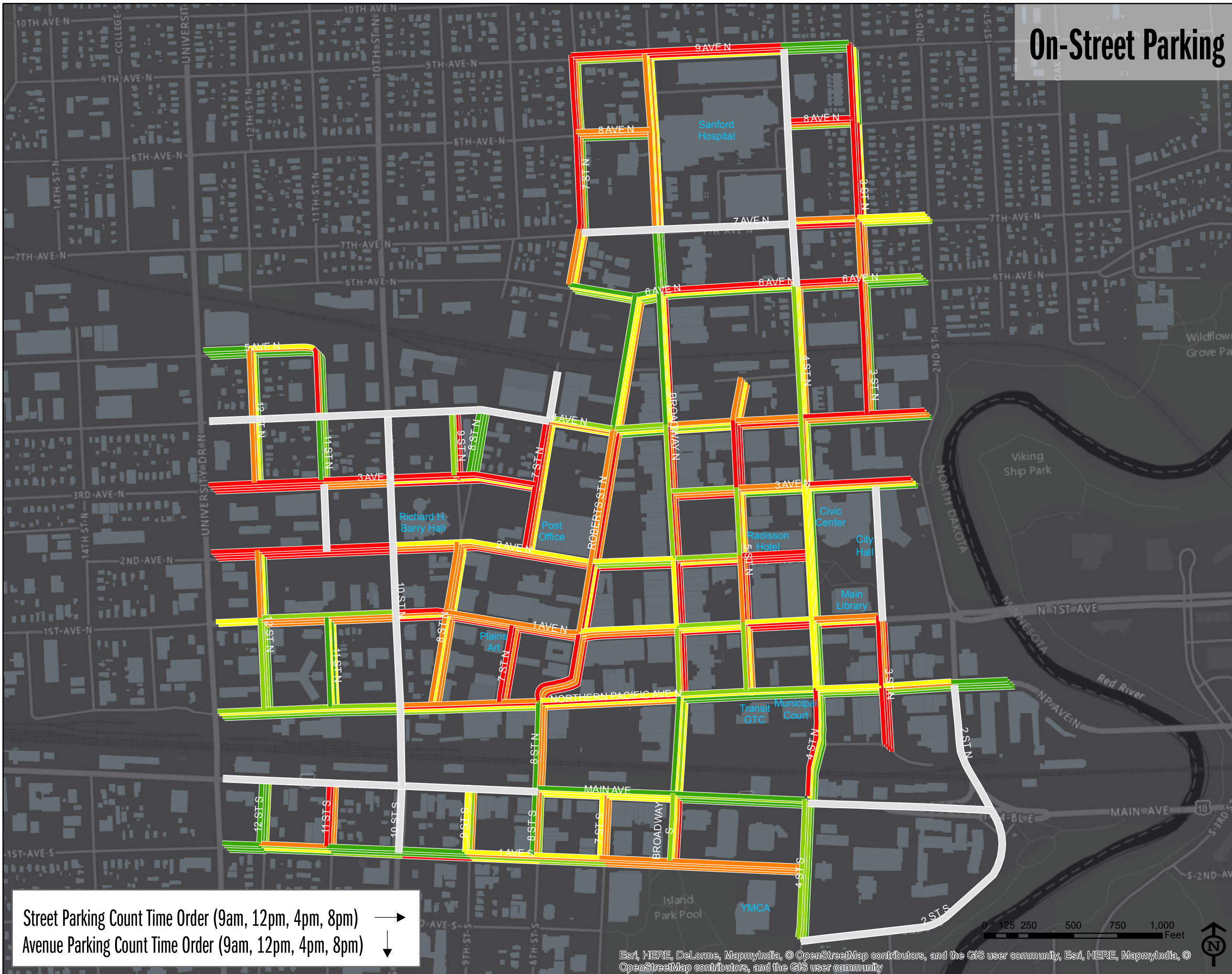


On-Street Parking Data Collection April 2017



- NO PARKING AREAS
- 0% - 20%
- 20.1% - 40%
- 40.1% - 60%
- 60.1% - 80%
- 80.1% - Greater

On-Street Parking Data for Study Area
 - Broadway Ave N (6th Ave N to Main Ave): 252 spaces
 TOTAL: 2,184 spaces

Street Parking Count Time Order (9am, 12pm, 4pm, 8pm) →
 Avenue Parking Count Time Order (9am, 12pm, 4pm, 8pm) ↓

