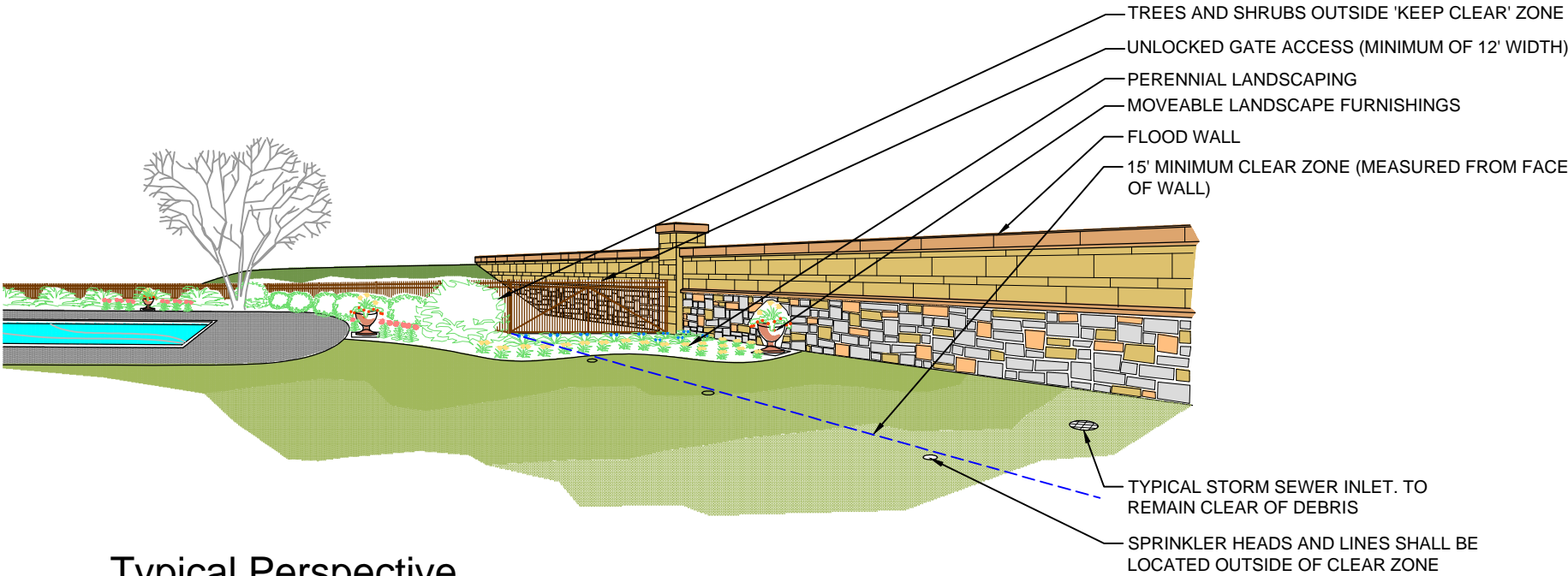
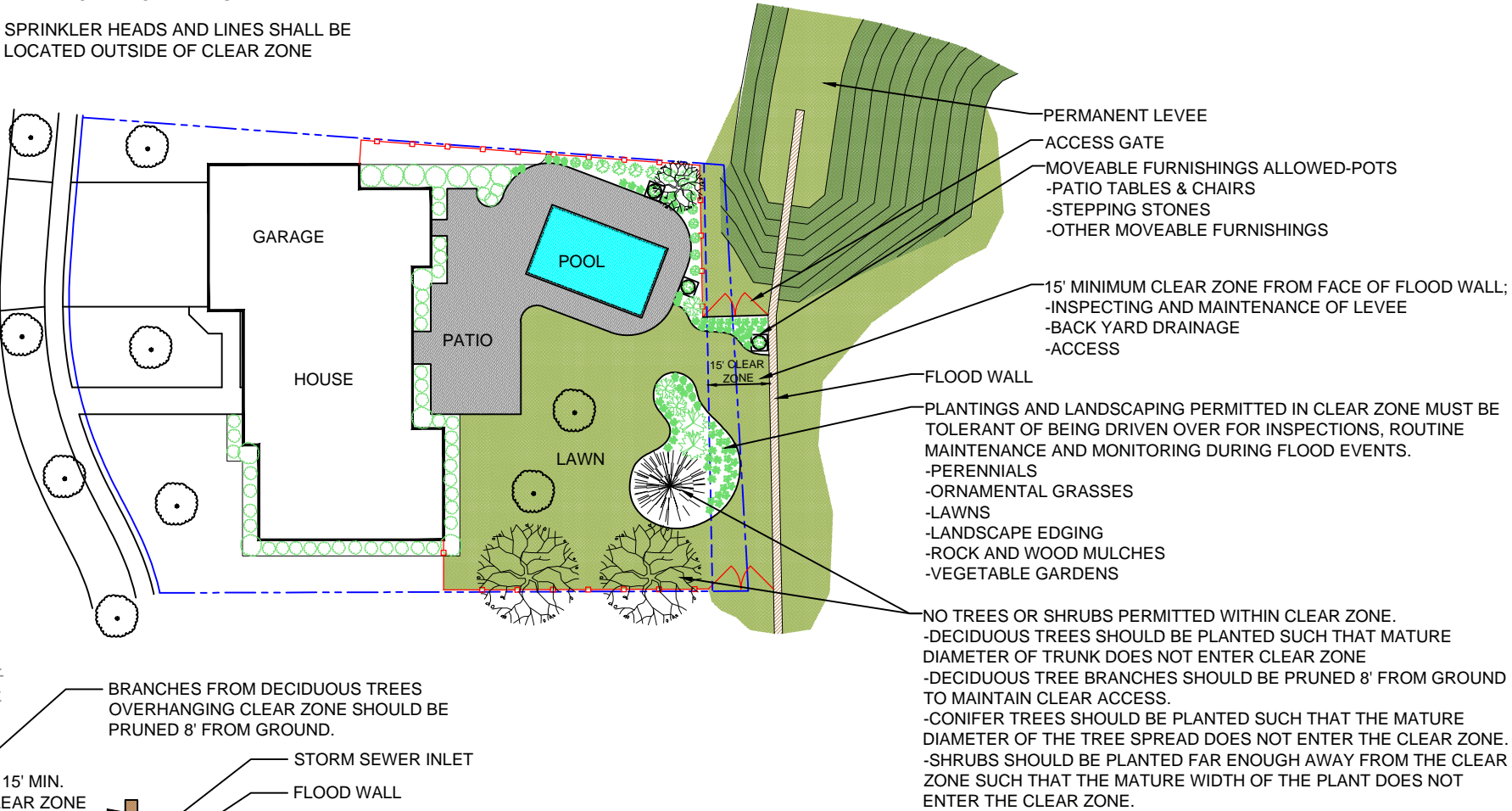


CITY OF FARGO
STANDARD FLOODWALL
ALLOWABLE USE EXAMPLE

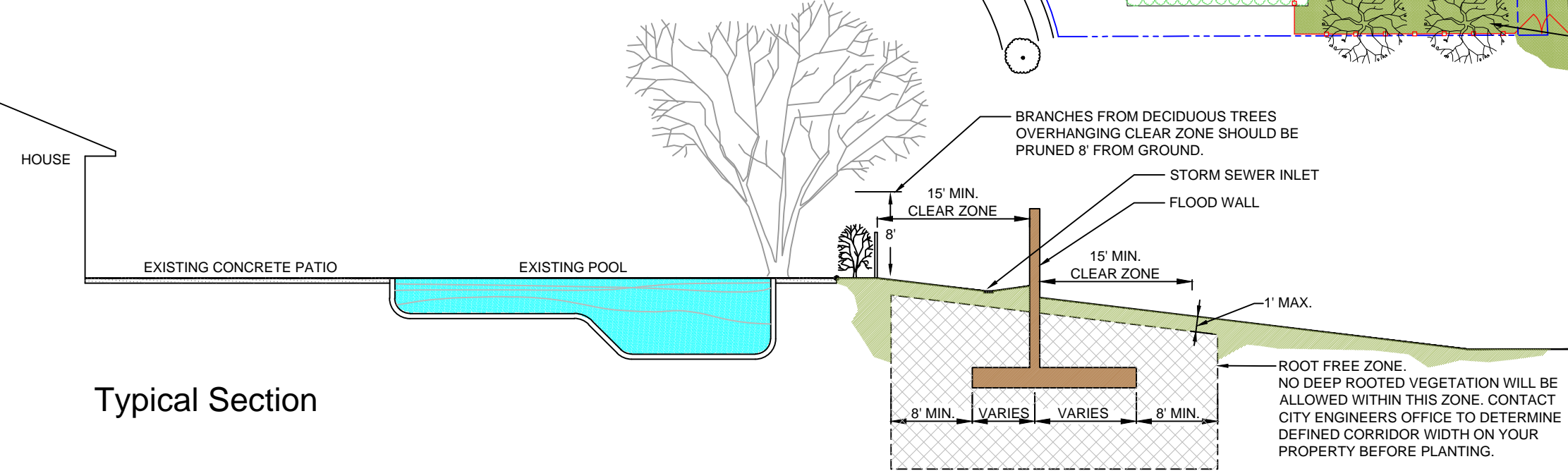


Typical Perspective

DRAINAGE NOTE:
DRAINAGE OF RUNOFF ADJACENT TO FLOODWALLS AND LEVEES IS IMPORTANT IN MAINTAINING THE INTEGRITY OF THE STRUCTURES. AS A RESULT, LANDSCAPING OR OTHER ADDED FEATURES SHOULD NOT CHANGE OR BLOCK THE DESIGN DRAINAGE GRADES AND FLOW PATHS.



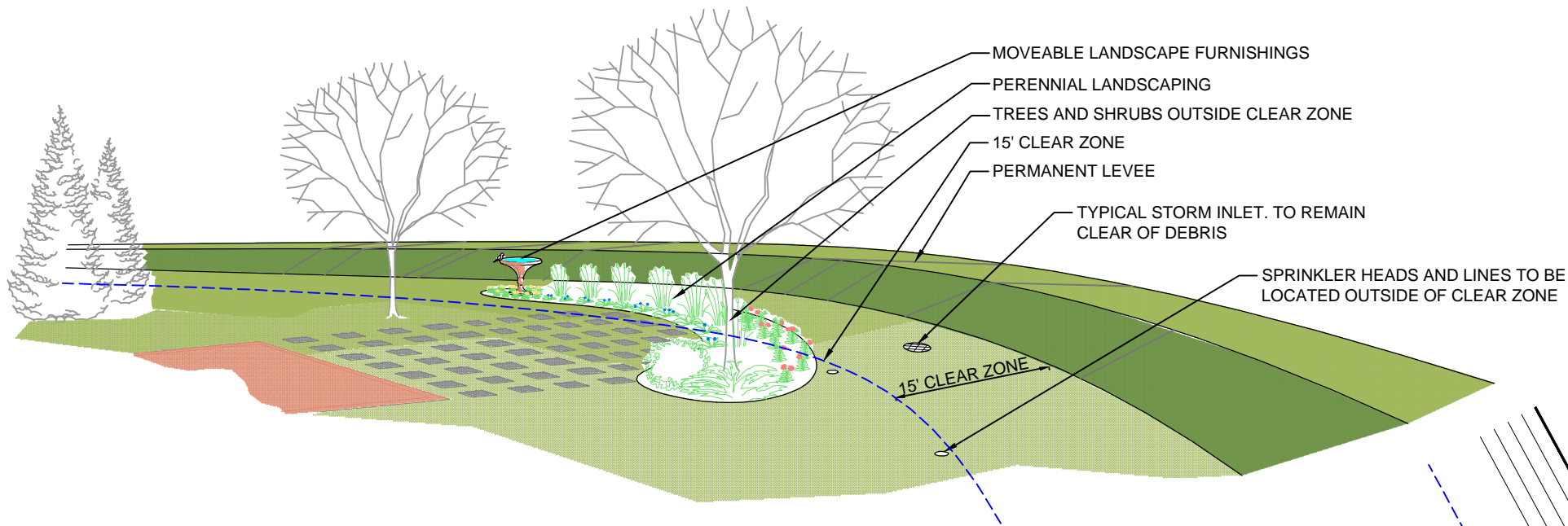
Typical Plan View



Typical Section

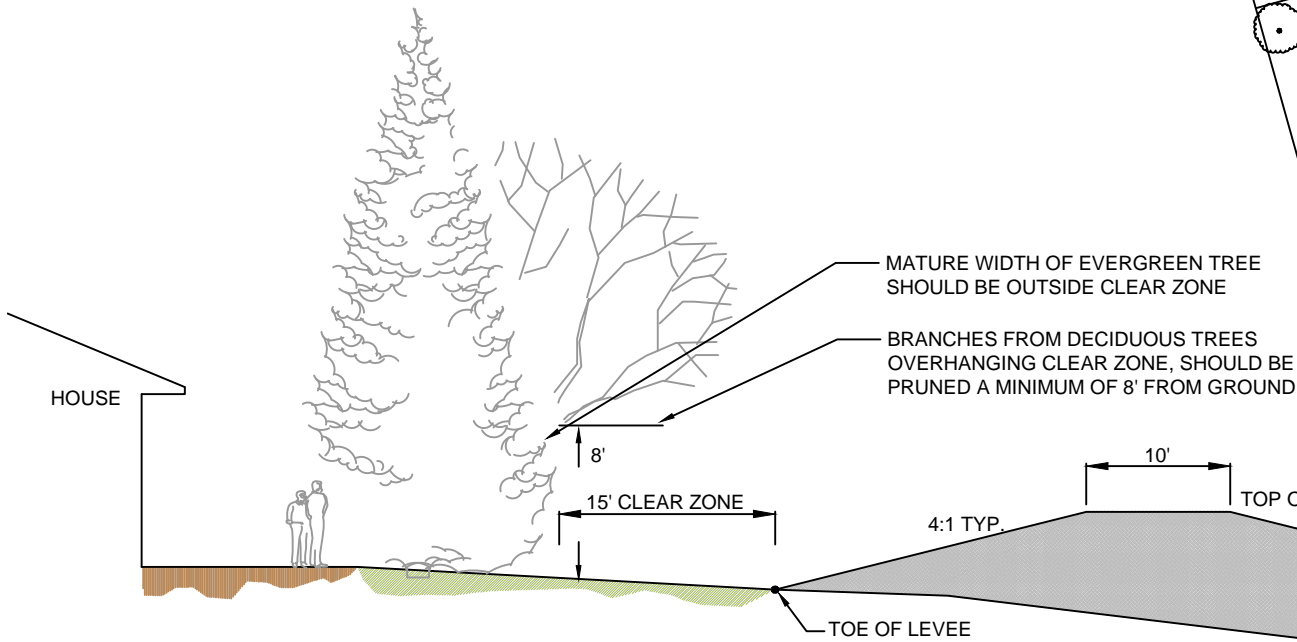
Warning:
The primary purpose of the identified Clear Zone is to provide a reliable corridor of access along the levees and floodwalls. As a result, this corridor must be free of obstructions to assure adequate access by personnel and equipment for inspection, routine maintenance, monitoring, and flood-fighting. The property owner will be solely responsible for the repair and/or replacement of any feature placed within the identified clear zone area. The City of Fargo will not be responsible for costs associated with any damage to features within this area resulting from the required access.

CITY OF FARGO
STANDARD LEVEE
ALLOWABLE USE EXAMPLE

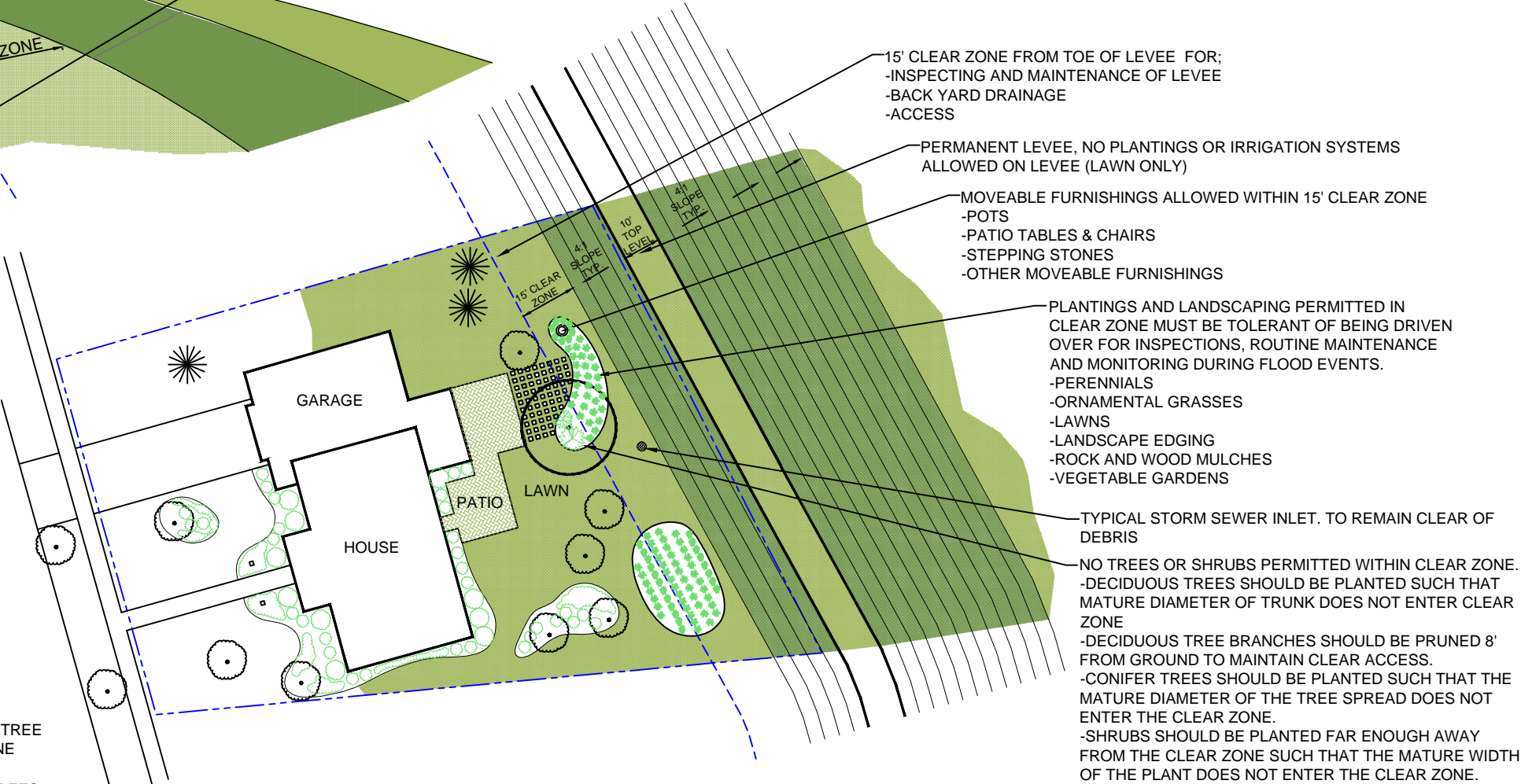


Typical Perspective

DRAINAGE NOTE:
DRAINAGE OF RUNOFF ADJACENT TO FLOODWALLS AND LEVEES IS IMPORTANT IN MAINTAINING THE INTEGRITY OF THE STRUCTURES. AS A RESULT, LANDSCAPING OR OTHER ADDED FEATURES SHOULD NOT CHANGE OR BLOCK THE DESIGN DRAINAGE GRADES AND FLOW PATHS.



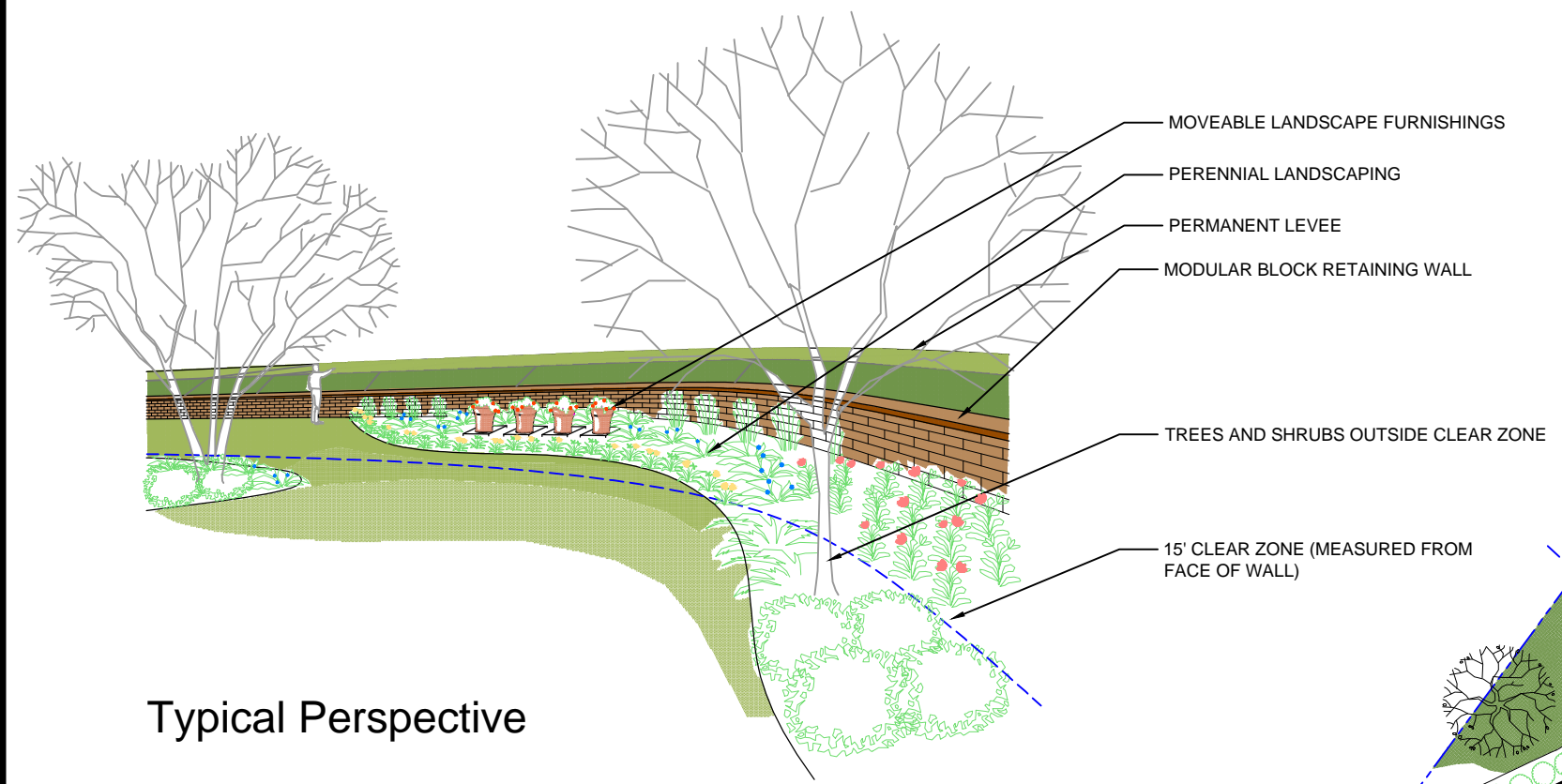
Typical Section



Typical Plan View

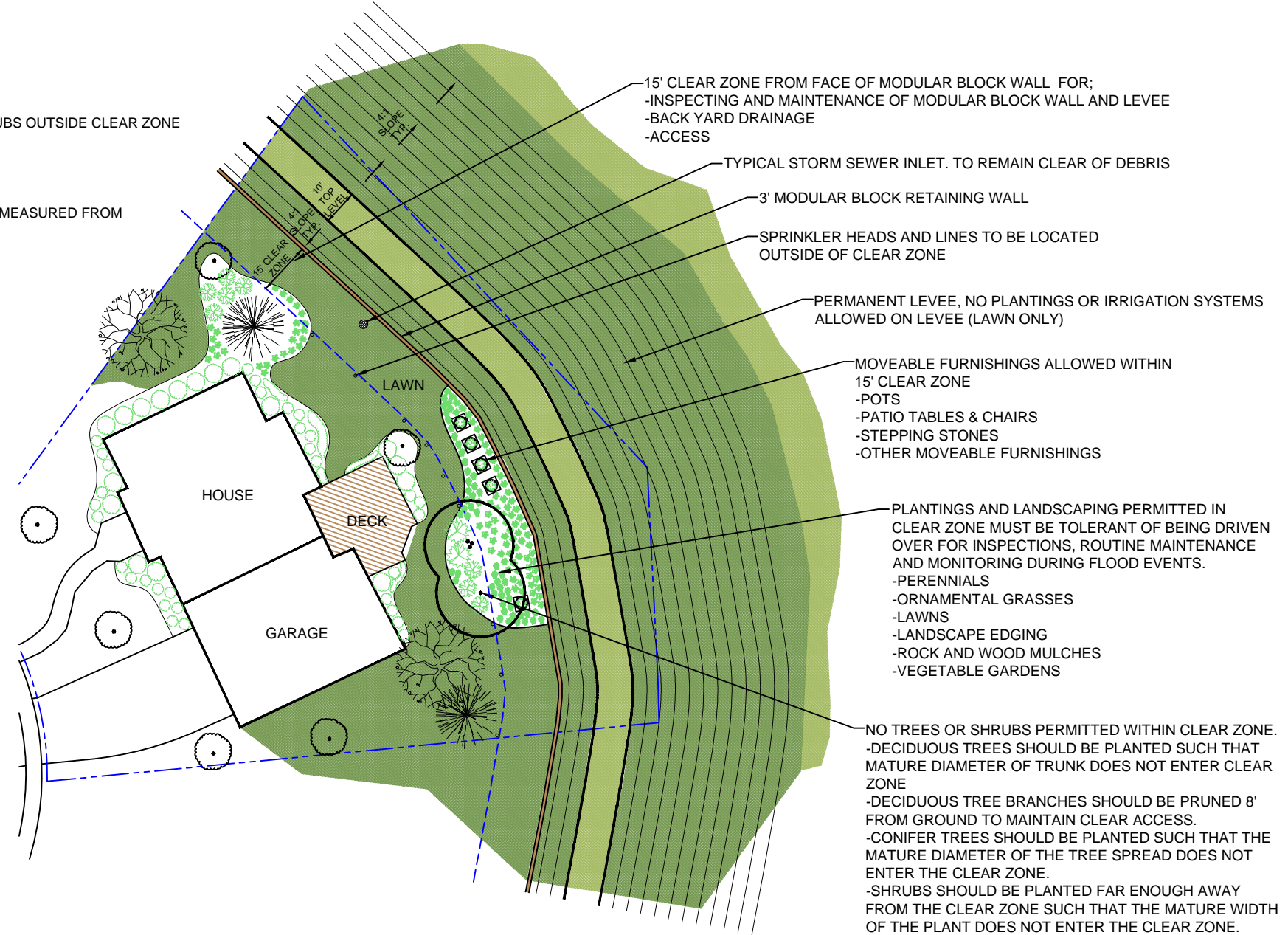
Warning:
The primary purpose of the identified Clear Zone is to provide a reliable corridor of access along the levees and floodwalls. As a result, this corridor must be free of obstructions to assure adequate access by personnel and equipment for inspection, routine maintenance, monitoring, and flood-fighting. The property owner will be solely responsible for the repair and/or replacement of any feature placed within the identified clear zone area. The City of Fargo will not be responsible for costs associated with any damage to features within this area resulting from the required access.

CITY OF FARGO
STANDARD COMBINATION LEVEE
WITH MODULAR BLOCK WALL
ALLOWABLE USE EXAMPLE

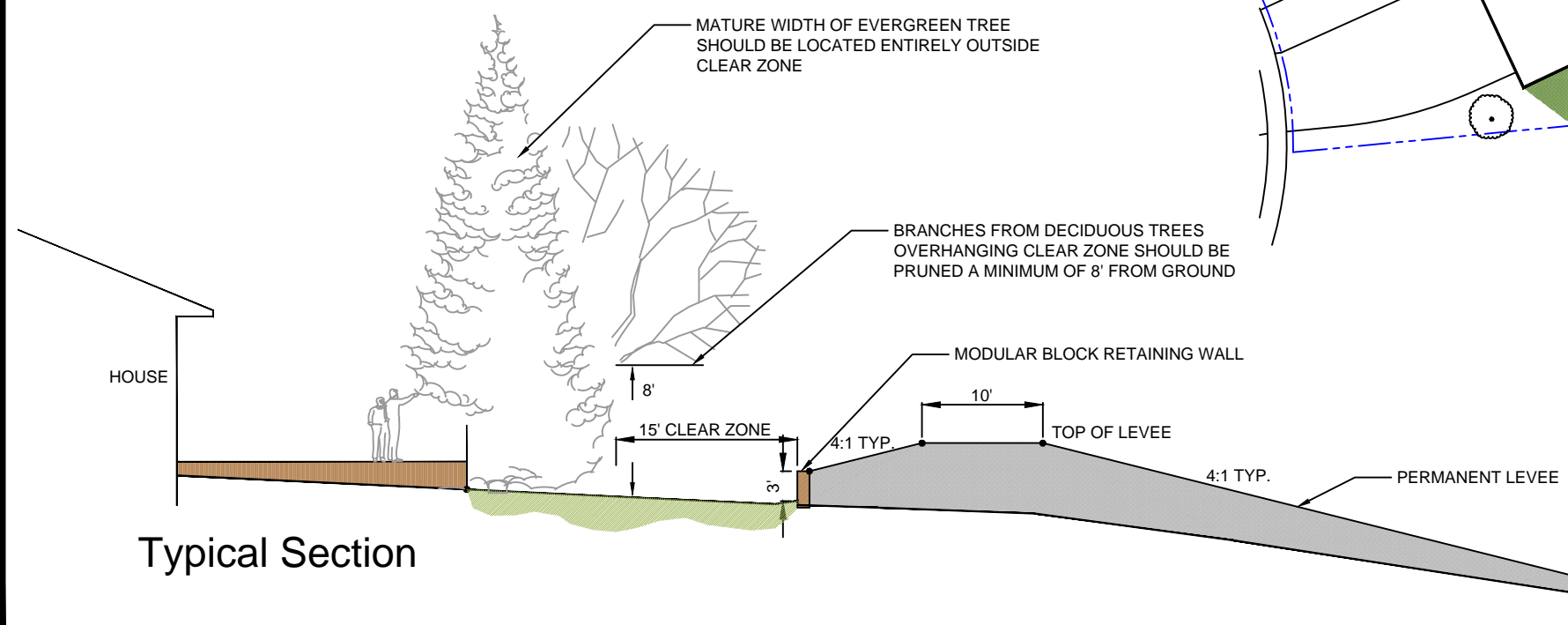


Typical Perspective

DRAINAGE NOTE:
DRAINAGE OF RUNOFF ADJACENT TO FLOODWALLS AND LEVEES IS IMPORTANT IN MAINTAINING THE INTEGRITY OF THE STRUCTURES. AS A RESULT, LANDSCAPING OR OTHER ADDED FEATURES SHOULD NOT CHANGE OR BLOCK THE DESIGN DRAINAGE GRADES AND FLOW PATHS.



Typical Plan View



Typical Section

Warning:
The primary purpose of the identified Clear Zone is to provide a reliable corridor of access along the levees and floodwalls. As a result, this corridor must be free of obstructions to assure adequate access by personnel and equipment for inspection, routine maintenance, monitoring, and flood-fighting. The property owner will be solely responsible for the repair and/or replacement of any feature placed within the identified clear zone area. The City of Fargo will not be responsible for costs associated with any damage to features within this area resulting from the required access.