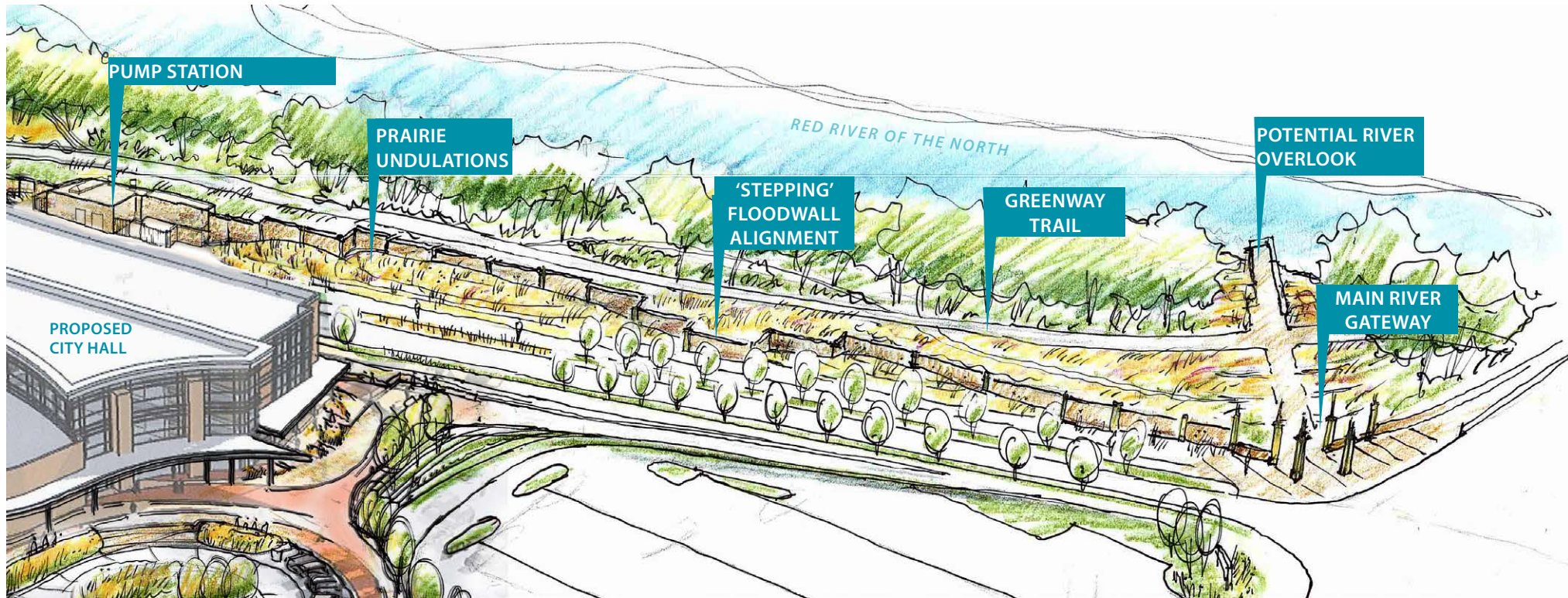


2ND STREET NORTH

PROPOSED 2ND STREET NORTH CONCEPT

bird's eye view looking east towards river

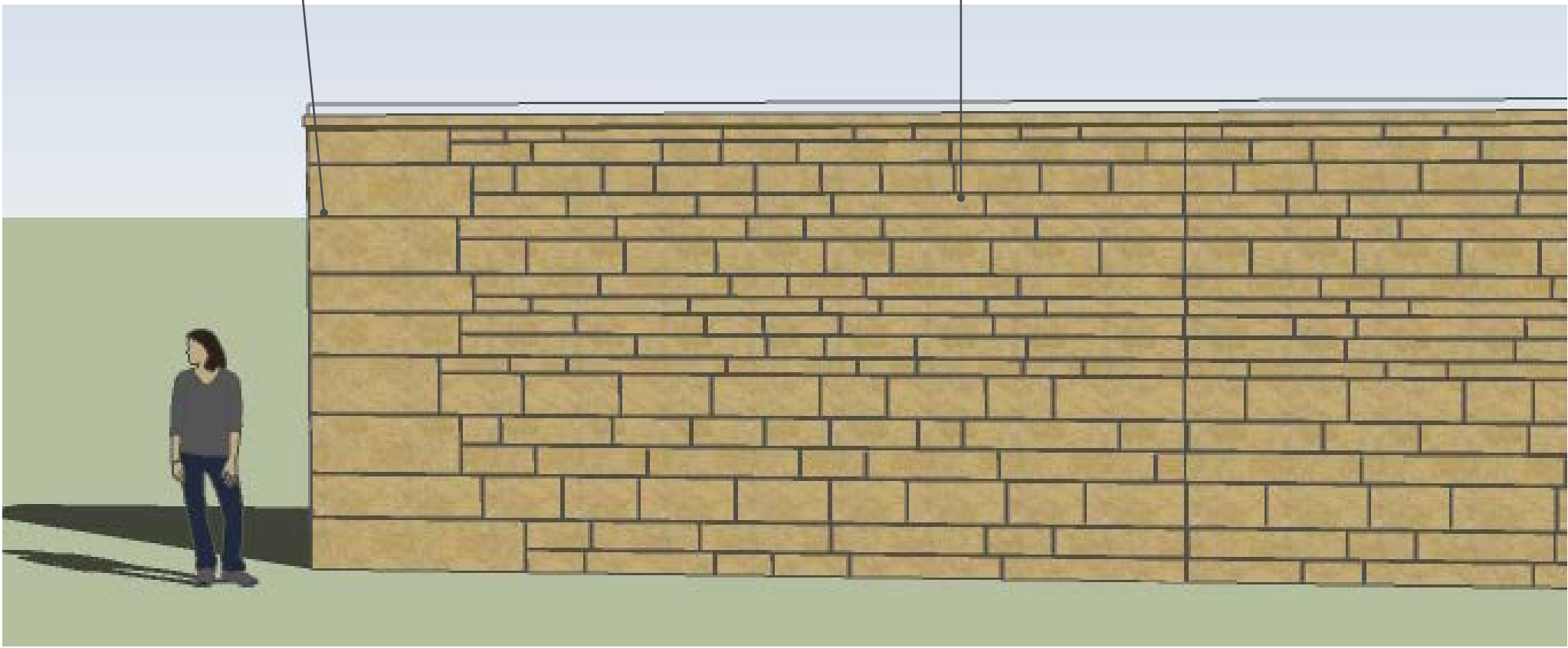


2ND STREET NORTH

Honed finish (smooth)
limestone formliner
at corners, openings,
wayfinding elements



Split face finish
(textured) limestone
formliner on wall



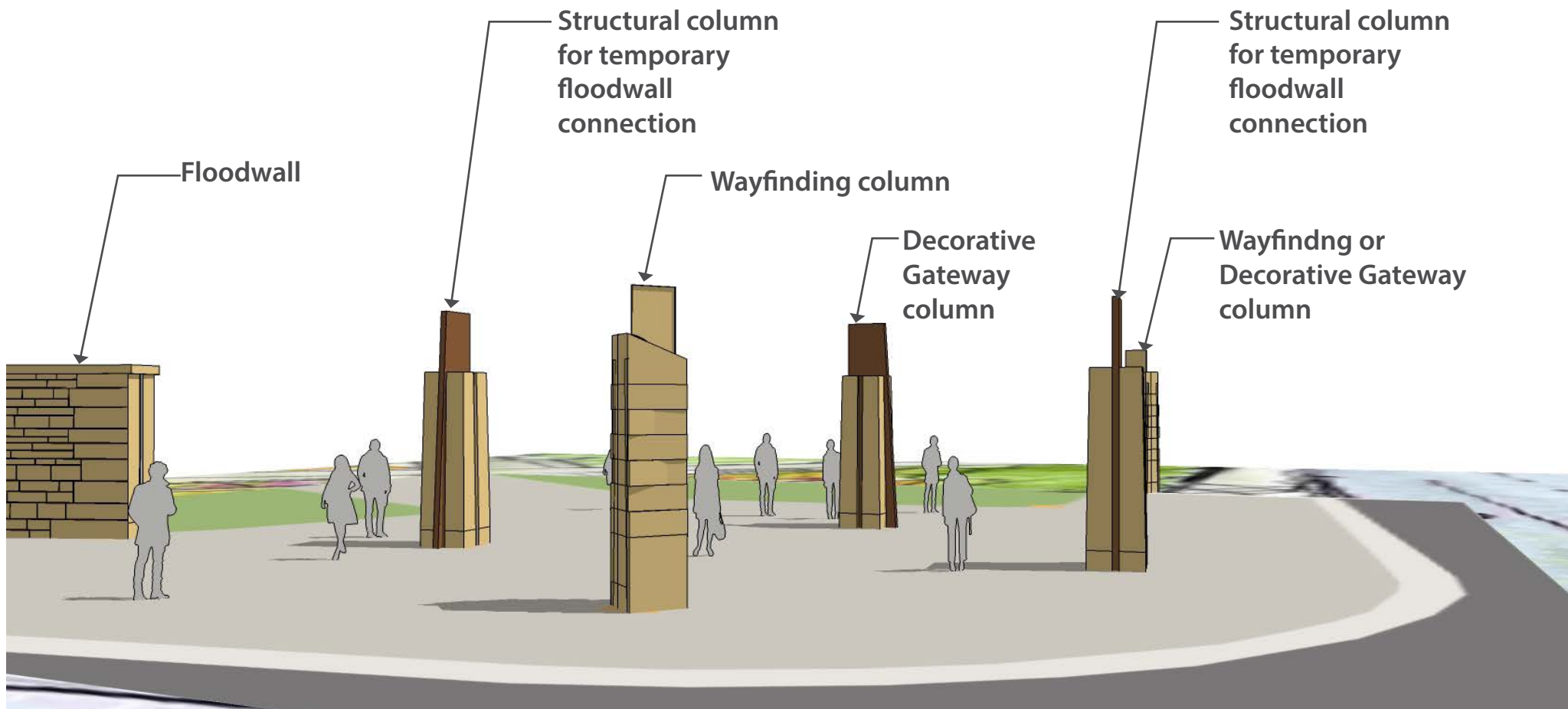
FLOODWALL PRELIMINARY CONCEPT- ELEVATION VIEW

2ND STREET NORTH



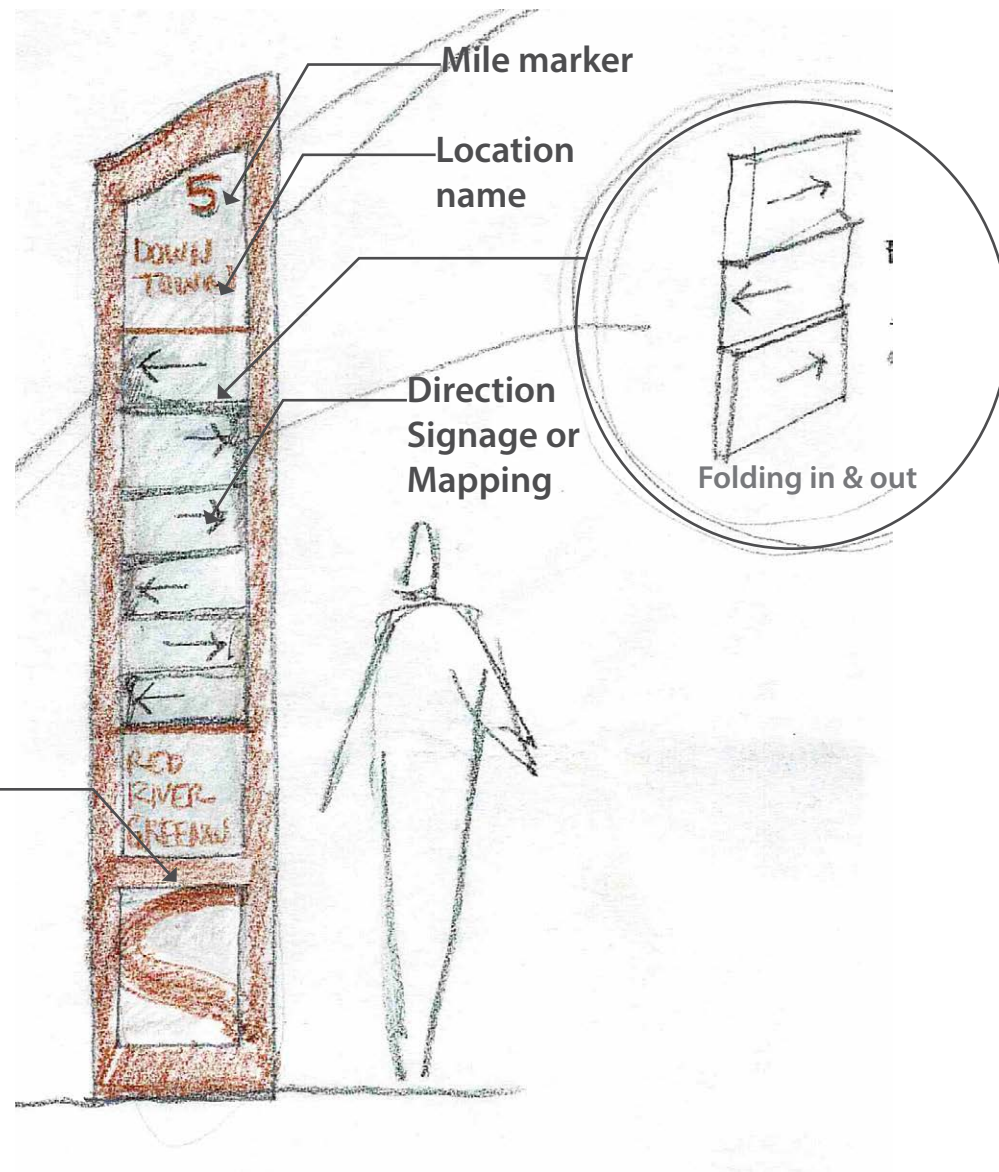
CONCEPTUAL SECTION OF 2ND STREET NORTH
across from City Hall looking north

2ND STREET NORTH

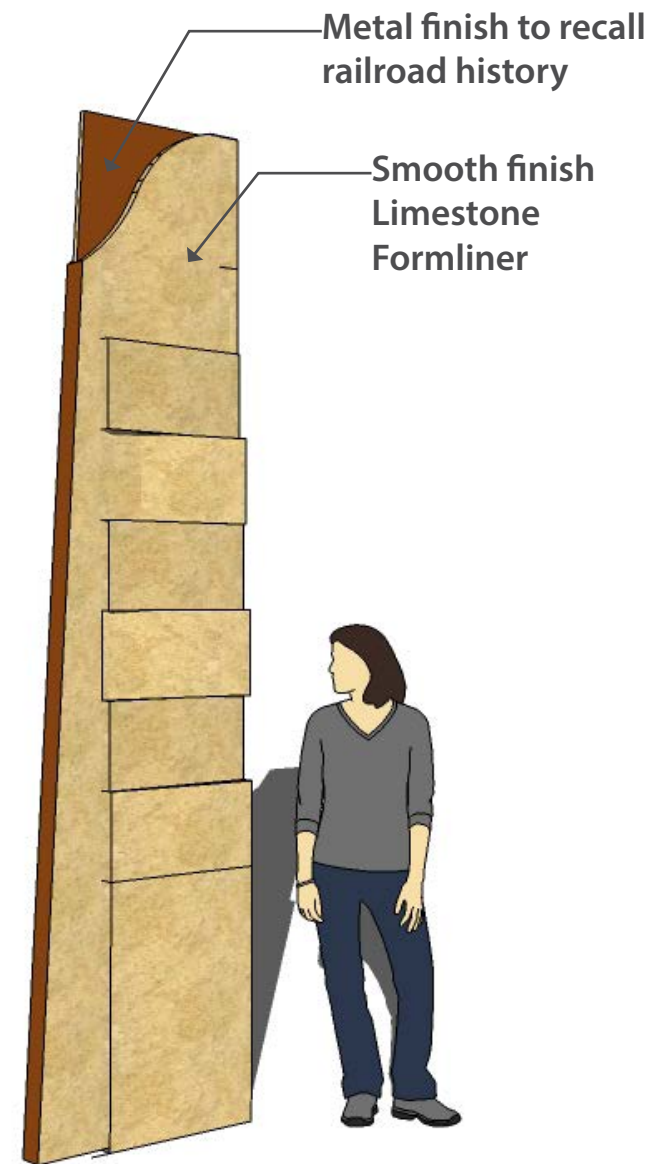


RIVER GATEWAY CONCEPT - MODEL STUDY
View at 1st and 2nd intersection looking towards Red River

WAYFINDING CONCEPTS



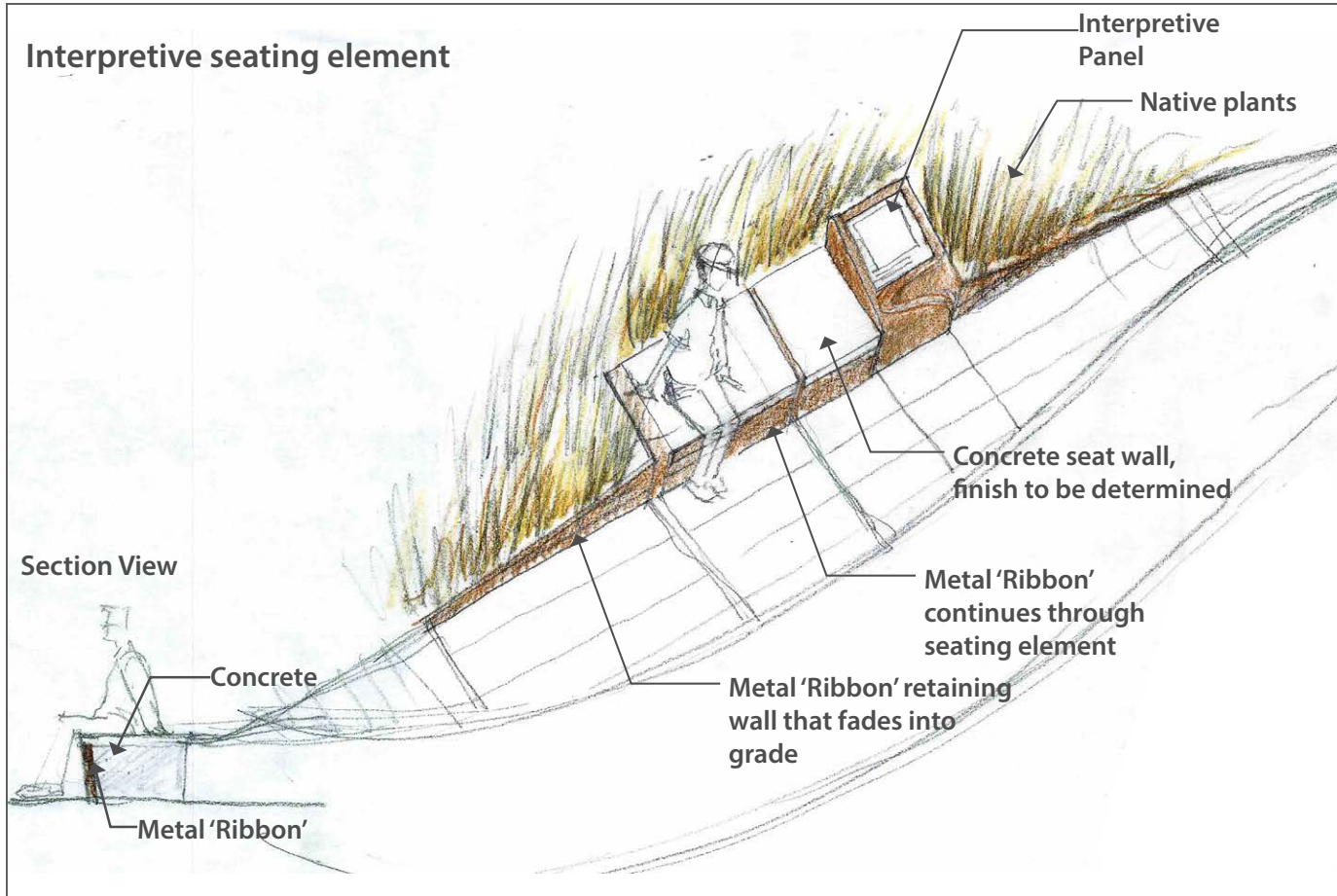
Direction Signage Sketch



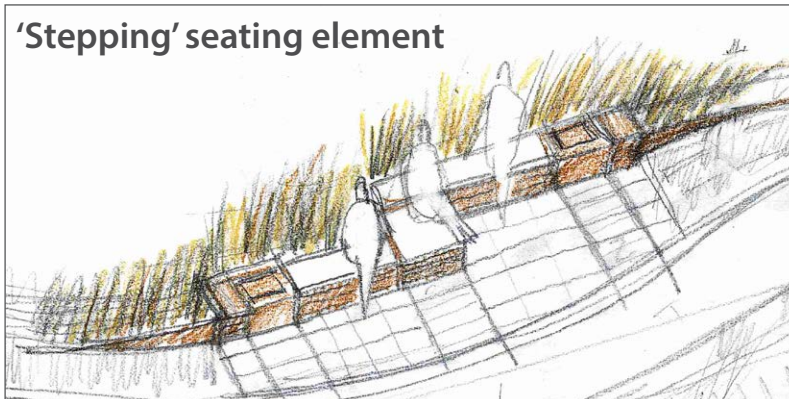
Direction Signage Model Study

SEATING ELEMENTS CONCEPTS

Interpretive seating element



'Stepping' seating element

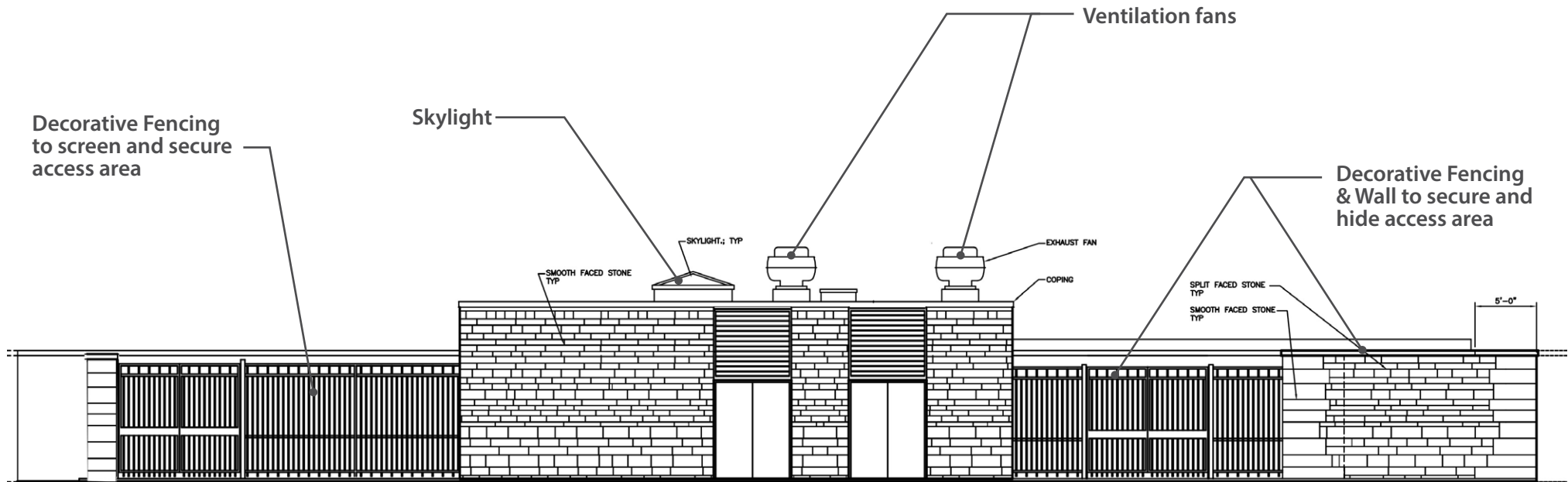


'Stepped' and curved seating element



2ND STREET NORTH

PUMP STATION CONCEPT- WEST ELEVATION VIEW



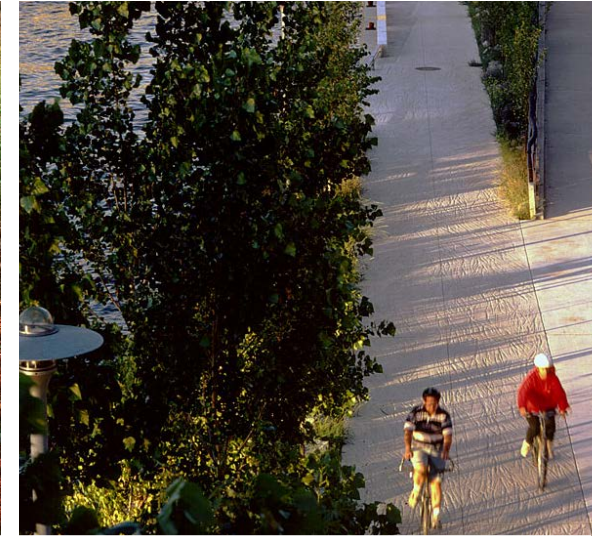
GATEWAY/RIVER ENTRY



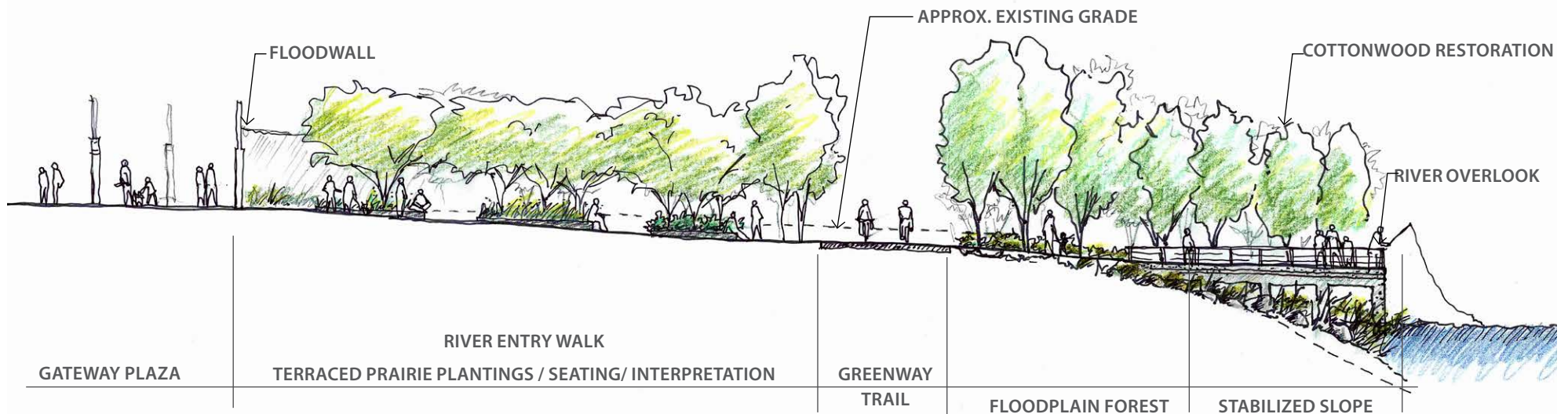
River Entry Walk extends into Gateway Plaza



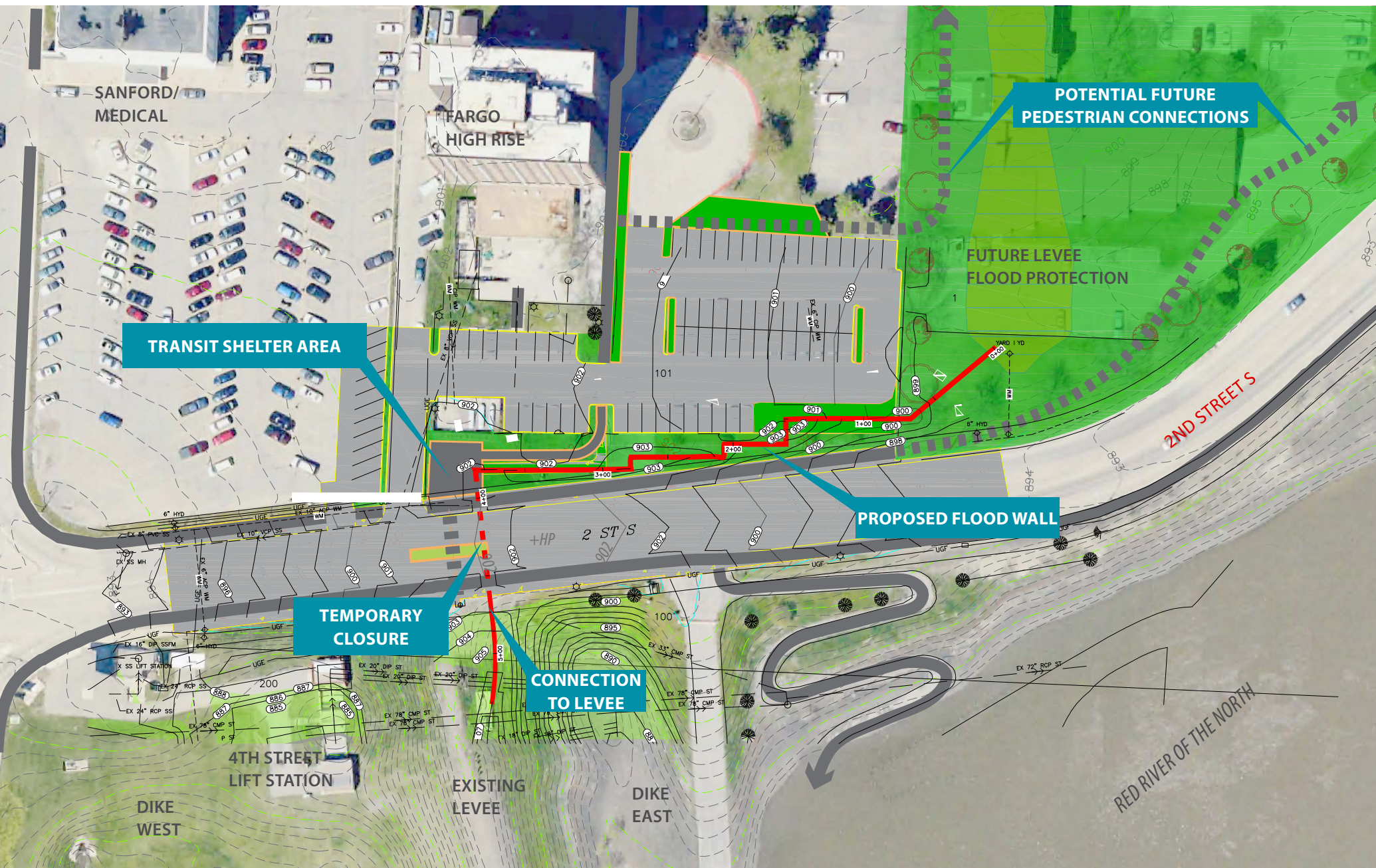
River Entry Walk Plantings



Greenway Trail Experience

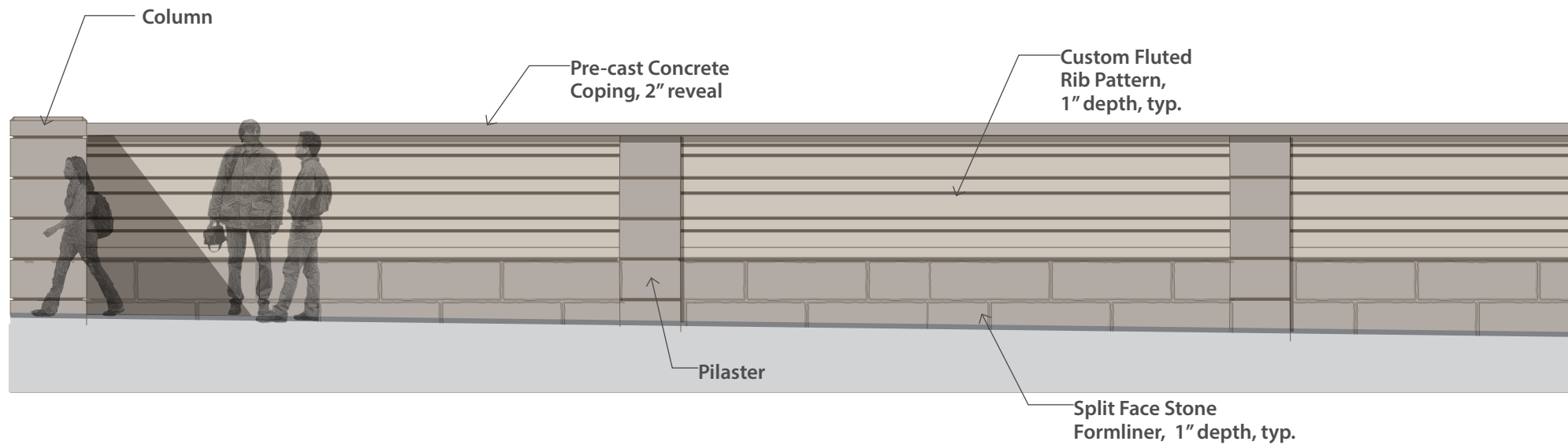


2ND STREET SOUTH



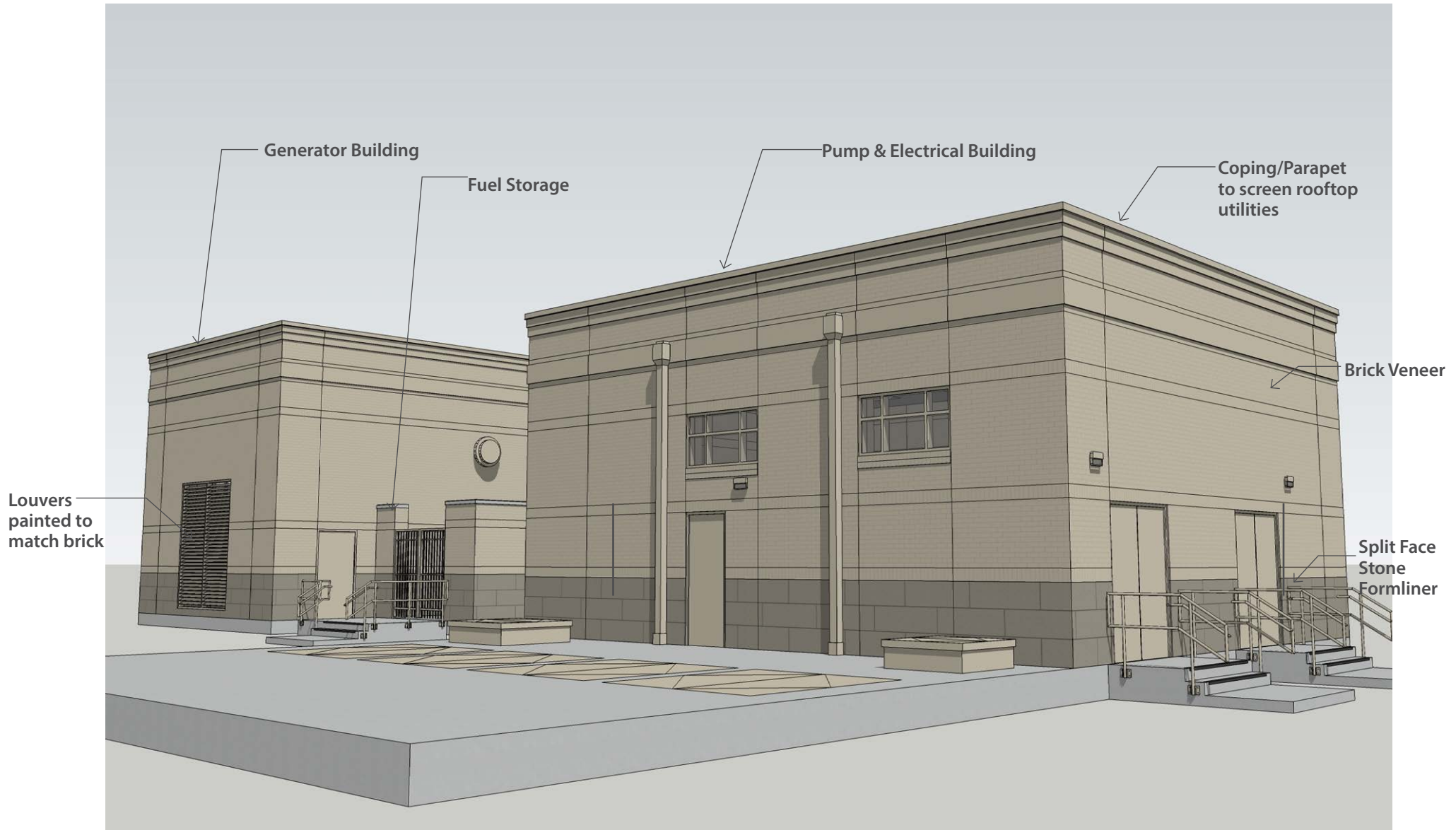
2ND STREET SOUTH

FLOODWALL CONCEPT- ELEVATION VIEW



2ND STREET SOUTH

4TH STREET PUMP STATION- PERSPECTIVE VIEW LOOKING NORTHEAST



2ND STREET SOUTH

WET SIDE PLANT PALETTE

facing 2nd Street and Red River

ADDITIONAL DESIGN OBJECTIVES:

- Mesic Prairie character- can withstand dry conditions and periods of inundation
- Plants in bloom throughout the growing season
- Simple, cohesive color palette
- Salt tolerant towards sidewalk edge



2ND STREET SOUTH

DRY SIDE PLANT PALETTE

facing fargo high rise

DESIGN OBJECTIVES:

- Can withstand shady, cool and dry conditions
- Northern Shade Garden precedent
- Variety of leaf textures and plant heights
- Salt tolerant near parking lot edge



Plant Massing Precedent 1



Plant Massing Precedent 2



Ligularia



Lady Fern



Solomon's Seal



Daylily



Bleeding Heart



Wild Ginger



Hosta



Lady's Mantle