



The following Crimes by Police Beat data has been extracted from the Fargo Police Department Law Enforcement Records Management System.

## Number of Calls for Service

Calls for Service per Beat is a count of all criminal and non-criminal calls for service.

- Calls for Service may be community generated or officer-initiated calls.
- Calls for Service include reports completed by citizens using the online reporting system (DORS).
- Calls for Service may be handled by Officers in the field or over the phone.
- Calls for Service do not always result in a police case report being taken, and may not involve any criminal offenses/charges.

## Case Offenses

Case Offenses per Beat is a count of case reports in which a Group A Offense was reported.

- Group A Offenses are defined by the FBI's National Incident-Based Reporting System (NIBRS), and does *not* include all possible criminal offense categories.
- Cases with multiple Group A Offenses reported are counted in *each* of the offense categories.
- The offense category "All Rape" includes Forcible Rape, Forcible Sodomy, and Sexual Assault with an Object. (Statutory Rape and Forcible Fondling are each counted in their own category)
- Case offenses may be added, removed, or get re-categorized if/when underlying facts change, or throughout the course of an investigation. Thus, you may see both current and historic numbers change over time.
  - For example, when a victim is shot but not killed, the offense is categorized as an Aggravated Assault. If the victim later dies, the offense is then re-categorized as a Murder/Non-Negligent Manslaughter. Another example is if a person reports their vehicle as stolen, the offense is categorized as a Motor Vehicle Theft. If the person later discovers their vehicle had actually been towed, the Motor Vehicle Theft offense would then get removed from the case.

## Shootings & Shots Fired Cases (data manually tracked by Fargo PD Intelligence & Analysis Unit)

Shootings per Beat is a count of cases where a victim sustains injuries due to the use of a firearm, but is not killed.

- The offense in these cases are categorized as an Aggravated Assault.
- If a shooting victim is killed, the case is NOT counted as a Shooting, and the offense is categorized as a Murder/Non-Negligent Manslaughter.

Shots Fired per Beat is a count of cases where gun shots were both reported AND confirmed by evidence such as, locating ammunition casings and/or damage to property or structures due to a firearm.

- Shots Fired cases do NOT result in any reported injuries.



## Analyst Notes:

### Beat 1

- Aggravated assaults were up from Feb as well as from YTD the previous year, however, the number increase was minimal, and 54% of cases were domestic violence related.
- Motor vehicle thefts were up from Feb as well as from YTD the previous year. No common suspects, patterns, or locations were identified.
- Theft from motor vehicles was up from Feb, however, is still down by 57% from YTD the previous year. No common locations or circumstances identified, and is likely attributed to seasonal crime increases.
- Shoplifting was up from Feb as well as from YTD the previous year. In 2025, 20 of the 24 shoplifting cases have been from the following two locations:
  - Hornacher's Northport (2510 Broadway N) – 11 cases
  - Family Fare (724 Univ Dr N) – 9 cases

### Beat 2

- Aggravated assaults were down both from Feb and from YTD the previous year.
- Simple assaults were minimally up from Feb, however, are still down by 20% from YTD the previous year.
- Burglary was minimally up from Feb, however, is still down 40% from YTD the previous year. No common suspects, patterns, or locations were identified.
- Motor vehicle thefts were up from Feb as well as from YTD the previous year, however, the number increase was minimal and no common suspects, patterns, or locations were identified.
- Theft from motor vehicles was up by 1 from Feb, but notably is down 85% compared to YTD the previous year (from 40 to 6).

### Beat 3

- Aggravated assaults were minimally up from Feb, however, are still down by 25% from YTD the previous year, and 67% of cases were domestic violence related.
- Simple assaults were up by 46% from Feb, but are still down from YTD the previous year, though only by 6%, and 57% of cases were domestic violence related.
- Burglary was up by 433% from Feb (from 3 to 16 cases), however, is still down by 35% from YTD the previous year. No common suspects, patterns, or locations were identified, and is likely attributed to seasonal crime increases.
- Theft from motor vehicles was up by 4 from Feb, but notably is down 80% compared to YTD the previous year (from 60 to 12).
- Shoplifting was up from Feb as well as from YTD the previous year. In 2025, 35 of the 49 shoplifting cases were from Cash Wise and Hornbacher's. The top locations are:
  - Cash Wise (1401 33<sup>rd</sup> St S) – 22 cases
  - Hornbacher's Express (1433 Univ Dr S) – 13 cases
  - Cash Wise Liquor (1414 34<sup>th</sup> St S) – 4 cases
  - CVS (2425 13<sup>th</sup> Ave S) – 4 cases
  - Casey's (2002 25<sup>th</sup> St S) – 4 cases

### Beat 4

- Simple assaults were down from Feb, however, are minimally up by 4% from YTD the previous year, though 72% of cases were domestic violence related.
- Burglary was up by 86% from Feb, but are still down from YTD the previous year, though only by 8%. No common suspects, patterns, or locations were identified, and is likely attributed to seasonal crime increases.
- Shoplifting was only up by 1 from Feb, but is up by 100% from YTD the previous year. In 2025, 34 of the 36 shoplifting cases were from the following three locations:
  - Fleet Farm (3730 36<sup>th</sup> St S) – 16 cases
  - Hornbacher's (1532 32<sup>nd</sup> Ave S) – 12 cases
  - Family Fare (3175 25<sup>th</sup> St S) – 6 cases

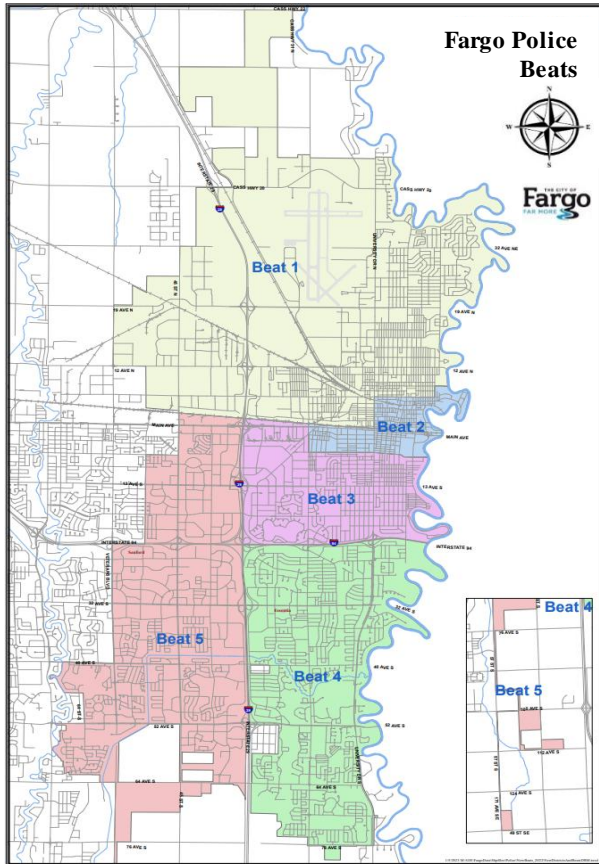
### Beat 5

- Arson was up by 2 from Feb and from YTD the previous year. Cases were analyzed and no common circumstances were identified.
- Aggravated assaults and simple assaults were both up from Feb, however, are both still down from YTD the previous year, and 55% of aggravated assault cases and 64% of simple assault cases were domestic violence related.
- Vandalism and Drug equip violations were both up from Feb, however, are both still down from YTD the previous year.
- Shoplifting was up from Feb, however, is still down by 15% from YTD the previous year. Beat 5 however accounts for 57% of *all* shoplifting cases in 2025, with Scheels being the top location (63 cases).



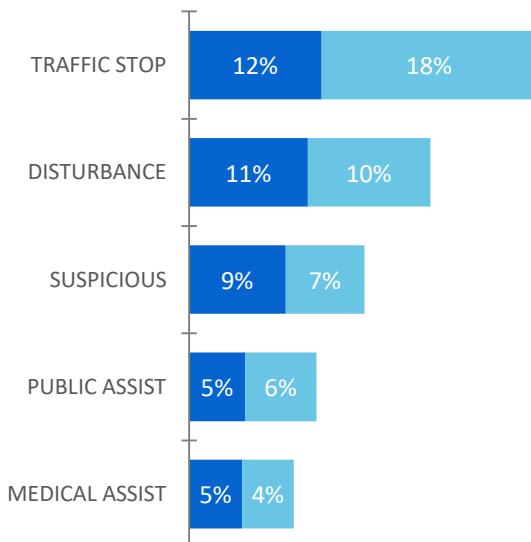
## ALL FARGO POLICE BEATS

\* YTD = Jan-Mar of each year



### TOP 5 CFS TYPES

■ YTD 2024 ■ YTD 2025



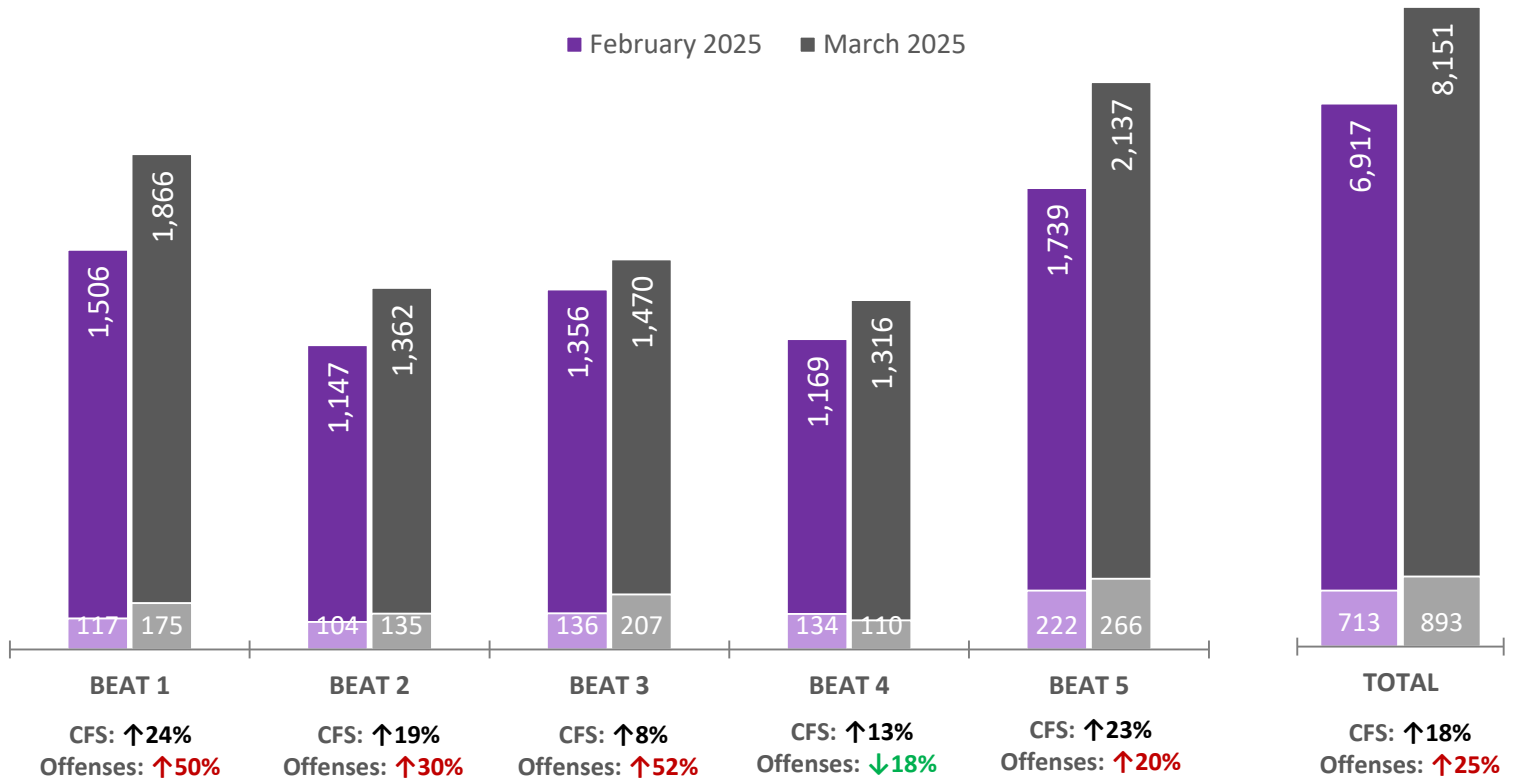
Feb 2025	Mar 2025	Change		YTD 2024	YTD 2025	YTD Change
6,917	8,151	↑ 18%	Number of Calls for Service (CFS)	20,798	22,185	↑ 7%
Group A Case Offenses:						
7	4	↓ 43%	All Rape	33	23	↓ 30%
90	103	↑ 14%	All Other Larceny	382	288	↓ 25%
4	2	↓ 50%	Animal Cruelty	3	7	↑ 133%
0	3	↑ 3	Arson	2	4	↑ 100%
17	27	↑ 59%	Assault, Aggravated	104	63	↓ 39%
130	155	↑ 19%	Assault, Simple	451	421	↓ 7%
0	0	N/C	Assisting or Promoting Prostitution	0	0	N/C
0	0	N/C	Betting/Wagering	0	0	N/C
0	0	N/C	Bribery	0	0	N/C
31	53	↑ 71%	Burglary/Breaking & Entering	253	141	↓ 44%
24	7	↓ 71%	Counterfeiting/Forgery	36	55	↑ 53%
0	0	N/C	Credit Card/Automatic Teller Machine Fraud	15	5	↓ 67%
40	63	↑ 58%	Destruction/Damage/Vandalism	248	164	↓ 34%
59	77	↑ 31%	Drug Equipment Violation	275	200	↓ 27%
49	52	↑ 6%	Drug/Narcotic Violations	204	152	↓ 25%
1	0	↓ 1	Embezzlement	8	1	↓ 88%
2	3	↑ 50%	Extortion/Blackmail	4	6	↑ 50%
4	8	↑ 100%	Forcible Fondling	22	19	↓ 14%
0	0	N/C	Fraud - Welfare Fraud	0	0	N/C
17	22	↑ 29%	Fraud-False Pretenses/Swindle	65	64	↓ 2%
0	0	N/C	Gambling Equip. Violations	0	0	N/C
0	0	N/C	Hacking/Computer Invasion (Fraud)	0	0	N/C
0	0	N/C	Human Trafficking, Commercial Sex Acts	0	1	↑ 1
0	1	↑ 1	Human Trafficking, Involuntary Servitude	0	2	↑ 2
29	23	↓ 21%	Identity Theft (Fraud)	63	78	↑ 24%
2	2	N/C	Impersonation	4	5	↑ 25%
0	0	N/C	Incest	2	0	↓ 2
24	52	↑ 117%	Intimidation	118	107	↓ 9%
1	0	↓ 1	Kidnapping/Abduction	8	3	↓ 63%
37	40	↑ 8%	Motor Vehicle Theft	103	110	↑ 7%
0	0	N/C	Murder/Non-Negligent Manslaughter	1	0	↓ 1
0	1	↑ 1	Negligent Manslaughter	0	1	↑ 1
0	0	N/C	Operating/Promoting/ Assisting Gambling	0	0	N/C
1	0	↓ 1	Pocket Picking	1	1	N/C
5	6	↑ 20%	Pornography/Obscene Material	14	19	↑ 36%
0	0	N/C	Prostitution	0	0	N/C
0	0	N/C	Purchasing Prostitution	1	0	↓ 1
0	2	↑ 2	Purse Snatching	4	4	N/C
4	3	↓ 25%	Robbery	18	11	↓ 39%
79	108	↑ 37%	Shoplifting	256	271	↑ 6%
0	0	N/C	Sports Tampering	0	0	N/C
6	8	↑ 33%	Stalking	15	21	↑ 40%
1	1	N/C	Statutory Rape	1	4	↑ 300%
6	13	↑ 117%	Stolen Property Offenses	49	29	↓ 41%
6	7	↑ 17%	Theft from Building	29	21	↓ 28%
0	0	N/C	Theft from Coin Operated Machine or Device	2	0	↓ 2
26	38	↑ 46%	Theft from Motor Vehicle	236	93	↓ 61%
4	1	↓ 75%	Theft of Motor Vehicle Parts or Accessories	8	6	↓ 25%
5	4	↓ 20%	Weapon Law Violations	23	13	↓ 43%
2	2	N/C	Wire Fraud	7	6	↓ 14%
713	891	↑ 25%	TOTAL	3,068	2,419	↓ 21%



## NUMBER OF CFS BY BEAT WITH INCLUDED NUMBER OF GROUP A OFFENSES

### MONTH OVER MONTH COMPARISON

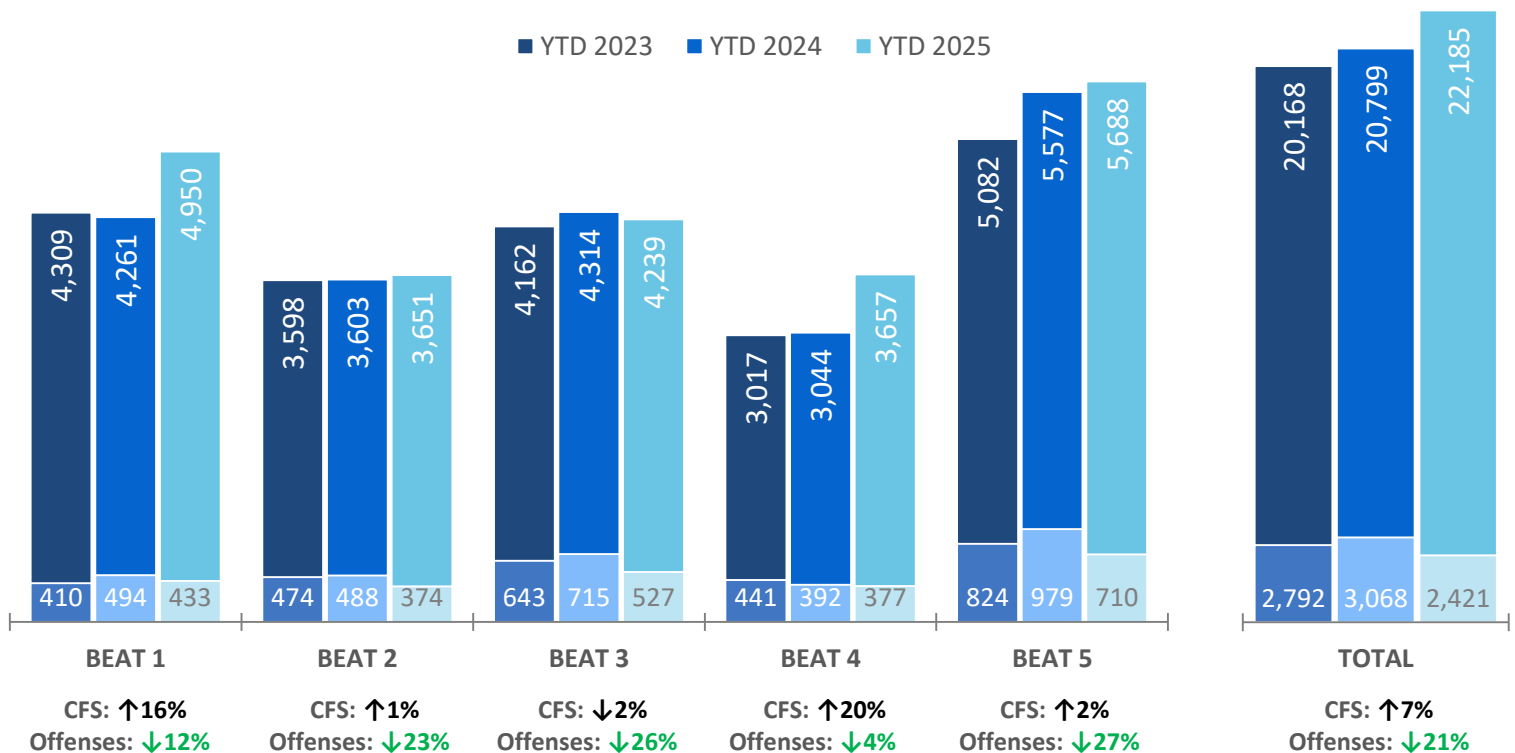
■ February 2025 ■ March 2025



### YEAR OVER YEAR COMPARISON

\*YTD=JAN-MAR

■ YTD 2023 ■ YTD 2024 ■ YTD 2025



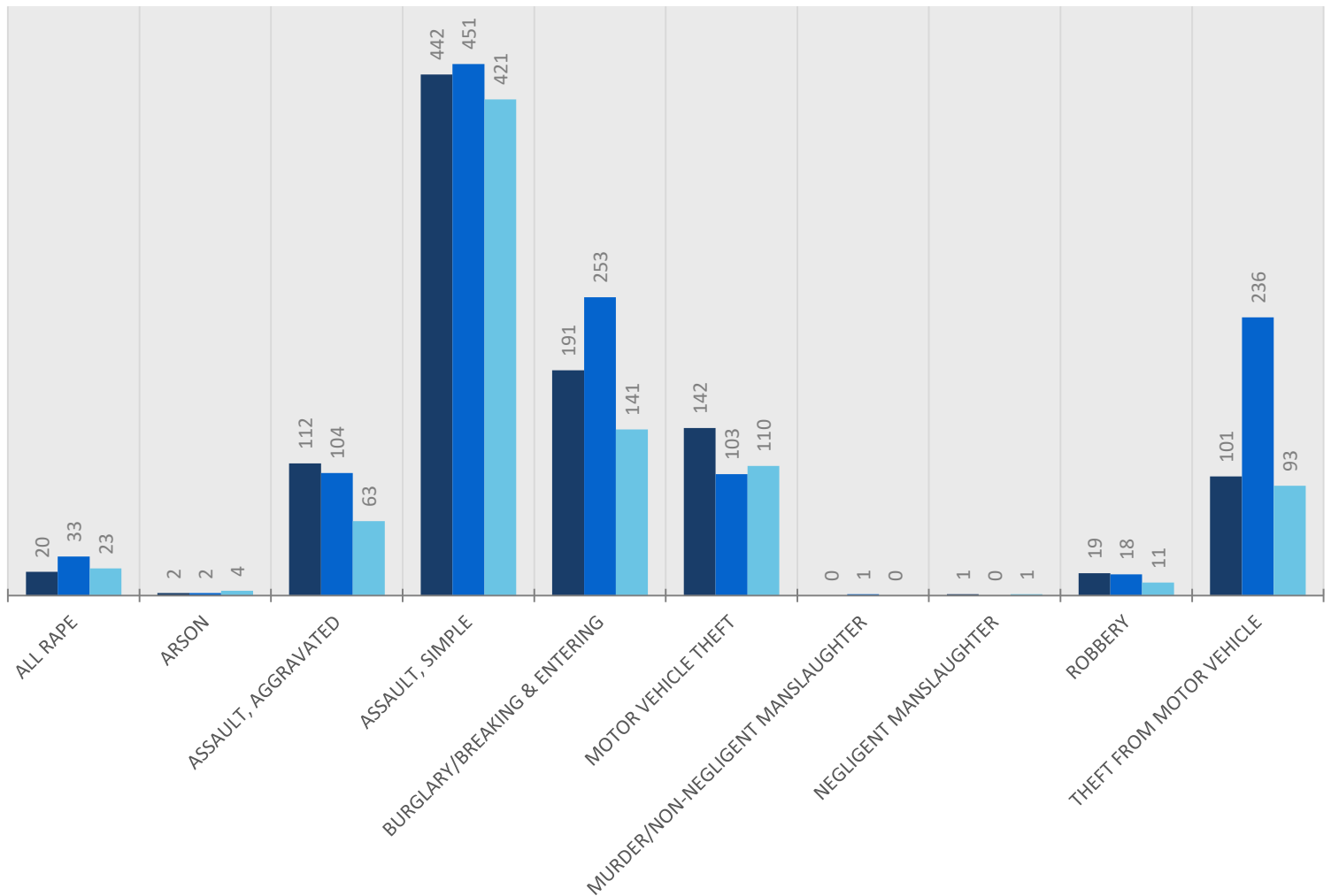


## ALL FARGO POLICE BEATS

\* YTD = Jan-Mar of each year

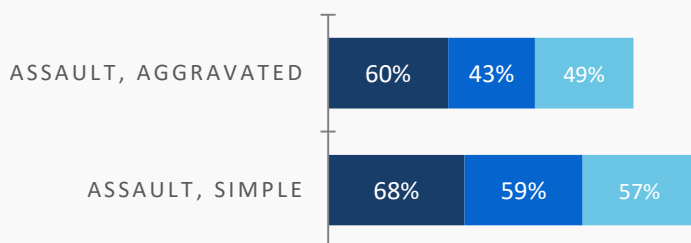
### SELECT GROUP A OFFENSES COUNT OF FARGO PD CASES PER OFFENSE CATEGORY

■ YTD 2023 ■ YTD 2024 ■ YTD 2025



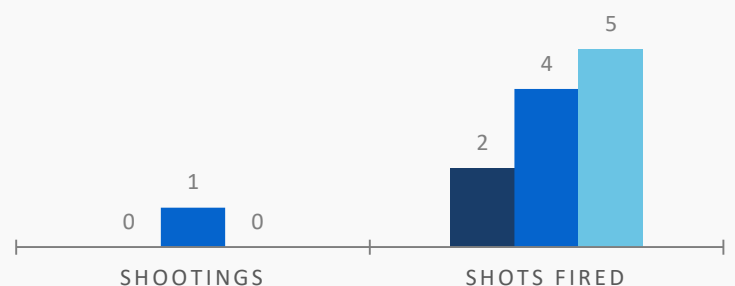
### PERCENTAGE OF ASSAULTS THAT WERE DOMESTIC VIOLENCE RELATED

■ YTD 2023 ■ YTD 2024 ■ YTD 2025



### SHOOTINGS & SHOTS FIRED

■ YTD 2023 ■ YTD 2024 ■ YTD 2025

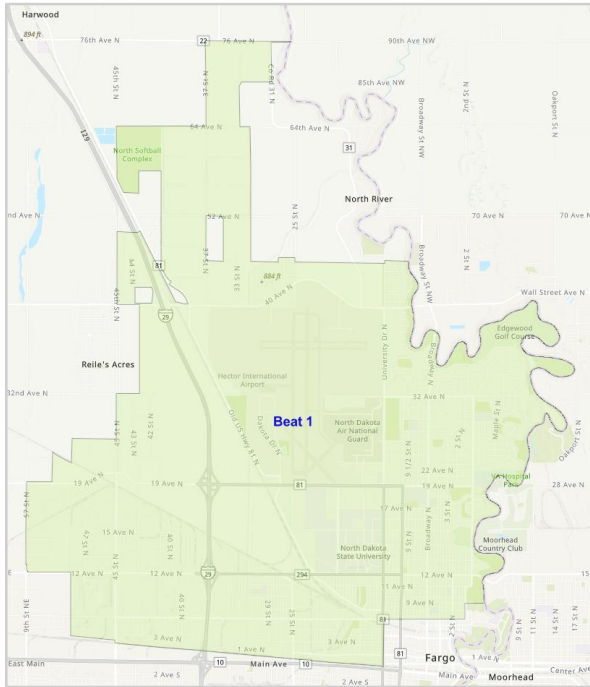






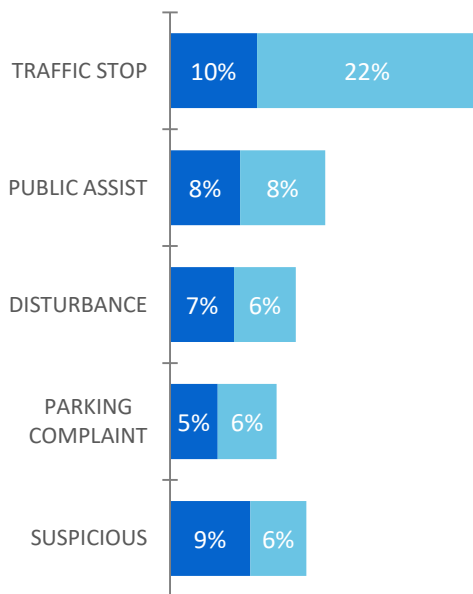
## FARGO POLICE BEAT 1

\* YTD = Jan-Mar of each year



### TOP 5 CFS TYPES

■ YTD 2024 ■ YTD 2025



Feb 2025	Mar 2025	Change		YTD 2024	YTD 2025	YTD Change
1,506	1,866	↑24%	Number of Calls for Service (CFS)	4,260	4,950	↑16%
Group A Case Offenses:						
2	1	↓ 50%	All Rape	4	4	N/C
16	31	↑ 94%	All Other Larceny	76	68	↓ 11%
0	1	↑ 1	Animal Cruelty	1	1	N/C
0	0	N/C	Arson	0	0	N/C
2	6	↑ 200%	Assault, Aggravated	12	13	↑ 8%
23	23	N/C	Assault, Simple	80	73	↓ 9%
0	0	N/C	Assisting or Promoting Prostitution	0	0	N/C
0	0	N/C	Betting/Wagering	0	0	N/C
0	0	N/C	Bribery	0	0	N/C
9	9	N/C	Burglary/Breaking & Entering	50	30	↓ 40%
1	1	N/C	Counterfeiting/Forgery	4	7	↑ 75%
0	0	N/C	Credit Card/Automatic Teller Machine Fraud	4	1	↓ 75%
7	16	↑ 129%	Destruction/Damage/Vandalism	38	33	↓ 13%
9	12	↑ 33%	Drug Equipment Violation	38	28	↓ 26%
4	9	↑ 125%	Drug/Narcotic Violations	24	23	↓ 4%
0	0	N/C	Embezzlement	1	0	↓ 1
0	0	N/C	Extortion/Blackmail	1	0	↓ 1
1	0	↓ 1	Forcible Fondling	2	1	↓ 50%
0	0	N/C	Fraud - Welfare Fraud	0	0	N/C
3	1	↓ 67%	Fraud-False Pretenses/Swindle	10	7	↓ 30%
0	0	N/C	Gambling Equip. Violations	0	0	N/C
0	0	N/C	Hacking/Computer Invasion (Fraud)	0	0	N/C
0	0	N/C	Human Trafficking, Commercial Sex Acts	0	0	N/C
0	0	N/C	Human Trafficking, Involuntary Servitude	0	0	N/C
8	8	N/C	Identity Theft (Fraud)	13	22	↑ 69%
0	2	↑ 2	Impersonation	1	2	↑ 100%
0	0	N/C	Incest	1	0	↓ 1
3	8	↑ 167%	Intimidation	22	17	↓ 23%
0	0	N/C	Kidnapping/Abduction	1	0	↓ 1
8	12	↑ 50%	Motor Vehicle Theft	21	31	↑ 48%
0	0	N/C	Murder/Non-Negligent Manslaughter	0	0	N/C
0	1	↑ 1	Negligent Manslaughter	0	1	↑ 1
0	0	N/C	Operating/Promoting/ Assisting Gambling	0	0	N/C
0	0	N/C	Pocket Picking	1	0	↓ 1
0	2	↑ 2	Pornography/Obscene Material	3	3	N/C
0	0	N/C	Prostitution	0	0	N/C
0	0	N/C	Purchasing Prostitution	1	0	↓ 1
0	1	↑ 1	Purse Snatching	0	1	↑ 1
0	0	N/C	Robbery	1	1	N/C
6	13	↑ 117%	Shoplifting	5	24	↑ 380%
0	0	N/C	Sports Tampering	0	0	N/C
0	2	↑ 2	Stalking	2	3	↑ 50%
0	0	N/C	Statutory Rape	0	0	N/C
2	1	↓ 50%	Stolen Property Offenses	7	5	↓ 29%
1	0	↓ 1	Theft from Building	11	4	↓ 64%
0	0	N/C	Theft from Coin Operated Machine or Device	0	0	N/C
7	14	↑ 100%	Theft from Motor Vehicle	54	23	↓ 57%
2	0	↓ 2	Theft of Motor Vehicle Parts or Accessories	0	2	↑ 2
2	0	↓ 2	Weapon Law Violations	2	3	↑ 50%
1	1	N/C	Wire Fraud	3	2	↓ 33%
117	175	↑ 50%	TOTAL	494	433	↓ 12%

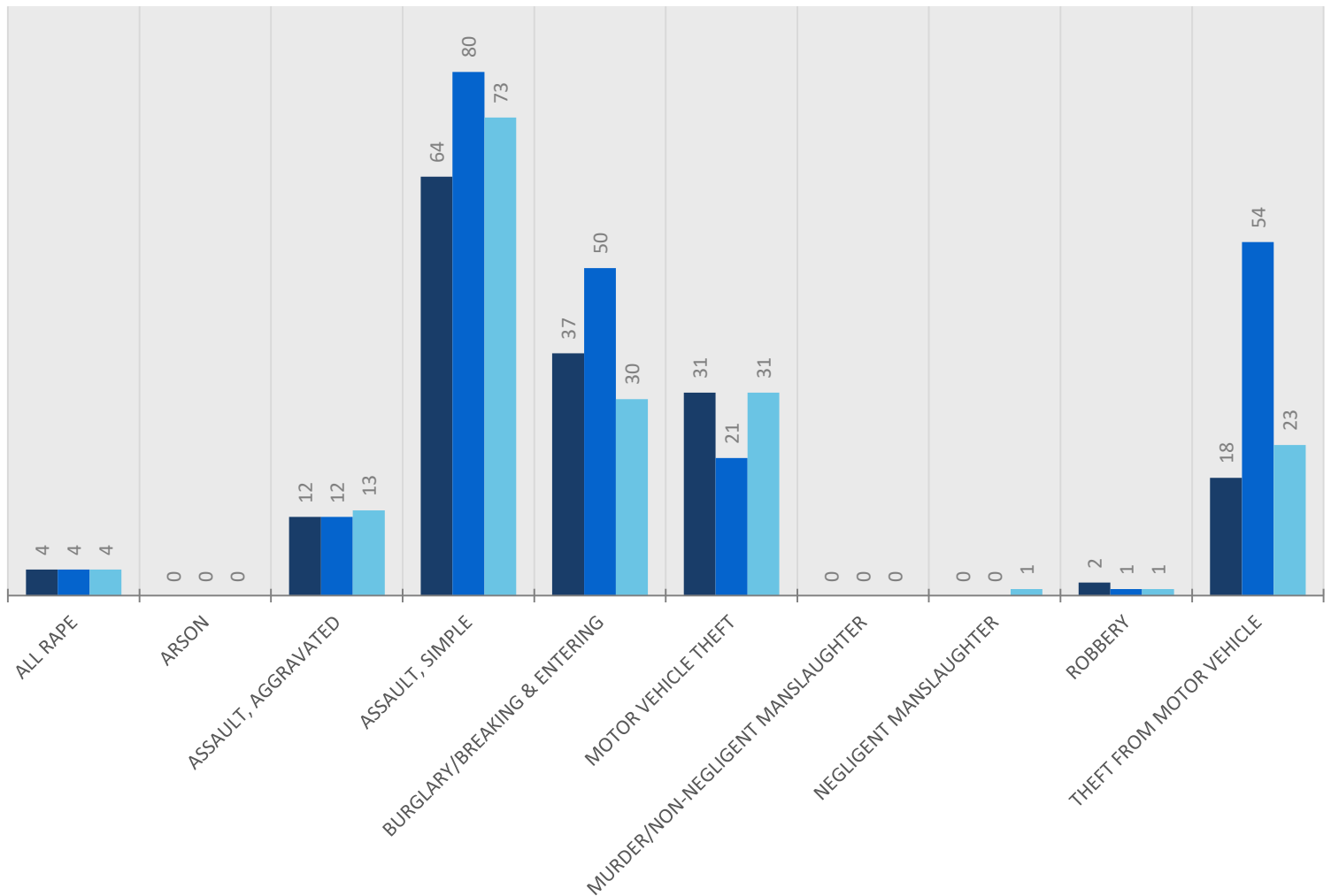


## FARGO POLICE BEAT 1

\* YTD = Jan-Mar of each year

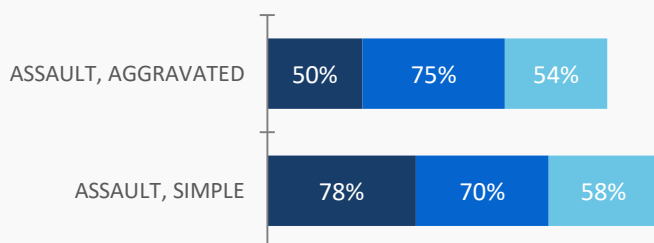
### SELECT GROUP A OFFENSES COUNT OF FARGO PD CASES PER OFFENSE CATEGORY

■ YTD 2023 ■ YTD 2024 ■ YTD 2025



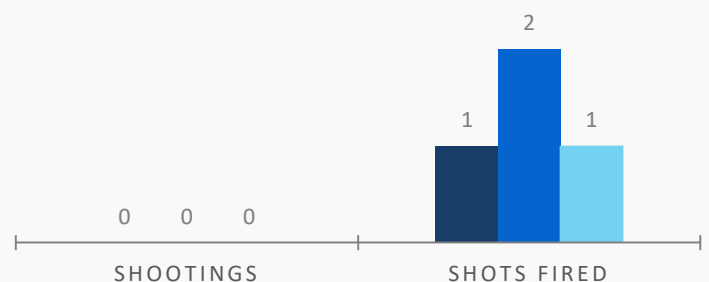
### PERCENTAGE OF ASSAULTS THAT WERE DOMESTIC VIOLENCE RELATED

■ YTD 2023 ■ YTD 2024 ■ YTD 2025



### SHOOTINGS & SHOTS FIRED

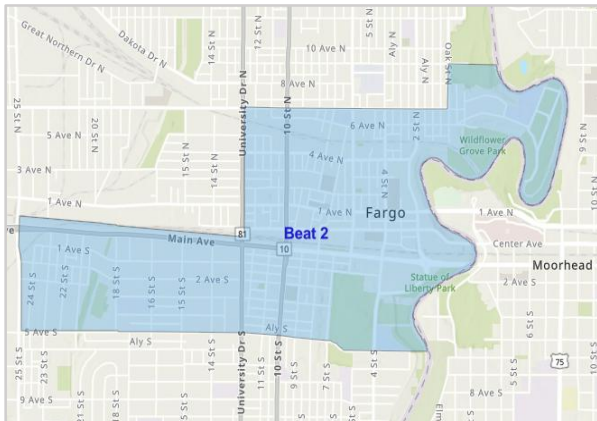
■ YTD 2023 ■ YTD 2024 ■ YTD 2025



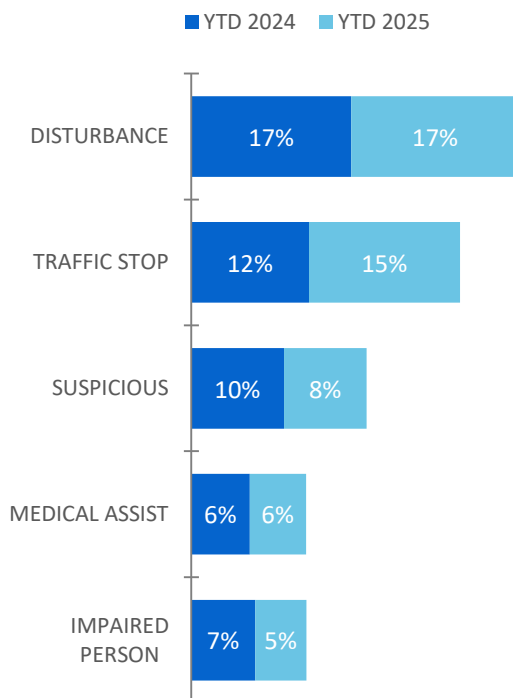


## FARGO POLICE BEAT 2

\* YTD = Jan-Mar of each year



### TOP 5 CFS TYPES



Feb 2025	Mar 2025	Change		YTD 2024	YTD 2025	YTD Change
1,147	1,362	↑ 19%	Number of Calls for Service (CFS)	3,603	3,651	↑ 1%
Group A Case Offenses:						
1	0	↓ 1	All Rape	6	2	↓ 67%
13	13	N/C	All Other Larceny	49	45	↓ 8%
0	0	N/C	Animal Cruelty	0	0	N/C
0	0	N/C	Arson	2	0	↓ 2
7	5	↓ 29%	Assault, Aggravated	32	16	↓ 50%
20	24	↑ 20%	Assault, Simple	86	69	↓ 20%
0	0	N/C	Assisting or Promoting Prostitution	0	0	N/C
0	0	N/C	Betting/Wagering	0	0	N/C
0	0	N/C	Bribery	0	0	N/C
2	6	↑ 200%	Burglary/Breaking & Entering	25	15	↓ 40%
3	1	↓ 67%	Counterfeiting/Forgery	3	8	↑ 167%
0	0	N/C	Credit Card/Automatic Teller Machine Fraud	2	1	↓ 50%
11	9	↓ 18%	Destruction/Damage/Vandalism	49	34	↓ 31%
15	21	↑ 40%	Drug Equipment Violation	53	53	N/C
13	15	↑ 15%	Drug/Narcotic Violations	50	40	↓ 20%
0	0	N/C	Embezzlement	1	0	↓ 1
0	0	N/C	Extortion/Blackmail	1	0	↓ 1
0	3	↑ 3	Forcible Fondling	3	5	↑ 67%
0	0	N/C	Fraud - Welfare Fraud	0	0	N/C
3	5	↑ 67%	Fraud-False Pretenses/Swindle	12	12	N/C
0	0	N/C	Gambling Equip. Violations	0	0	N/C
0	0	N/C	Hacking/Computer Invasion (Fraud)	0	0	N/C
0	0	N/C	Human Trafficking, Commercial Sex Acts	0	0	N/C
0	0	N/C	Human Trafficking, Involuntary Servitude	0	0	N/C
2	0	↓ 2	Identity Theft (Fraud)	9	6	↓ 33%
0	0	N/C	Impersonation	0	0	N/C
0	0	N/C	Incest	0	0	N/C
4	11	↑ 175%	Intimidation	17	18	↑ 6%
1	0	↓ 1	Kidnapping/Abduction	1	1	N/C
3	7	↑ 133%	Motor Vehicle Theft	12	16	↑ 33%
0	0	N/C	Murder/Non-Negligent Manslaughter	0	0	N/C
0	0	N/C	Negligent Manslaughter	0	0	N/C
0	0	N/C	Operating/Promoting/ Assisting Gambling	0	0	N/C
0	0	N/C	Pocket Picking	0	0	N/C
0	0	N/C	Pornography/Obscene Material	0	0	N/C
0	0	N/C	Prostitution	0	0	N/C
0	0	N/C	Purchasing Prostitution	0	0	N/C
0	0	N/C	Purse Snatching	2	0	↓ 2
0	1	↑ 1	Robbery	3	1	↓ 67%
1	5	↑ 400%	Shoplifting	7	7	N/C
0	0	N/C	Sports Tampering	0	0	N/C
0	2	↑ 2	Stalking	0	5	↑ 5
1	0	↓ 1	Statutory Rape	0	1	↑ 1
1	2	↑ 100%	Stolen Property Offenses	11	5	↓ 55%
0	2	↑ 2	Theft from Building	2	3	↑ 50%
0	0	N/C	Theft from Coin Operated Machine or Device	2	0	↓ 2
1	2	↑ 100%	Theft from Motor Vehicle	40	6	↓ 85%
1	0	↓ 1	Theft of Motor Vehicle Parts or Accessories	2	2	N/C
0	1	↑ 1	Weapon Law Violations	5	2	↓ 60%
1	0	↓ 1	Wire Fraud	1	1	N/C
104	135	↑ 30%	TOTAL	488	374	↓ 23%



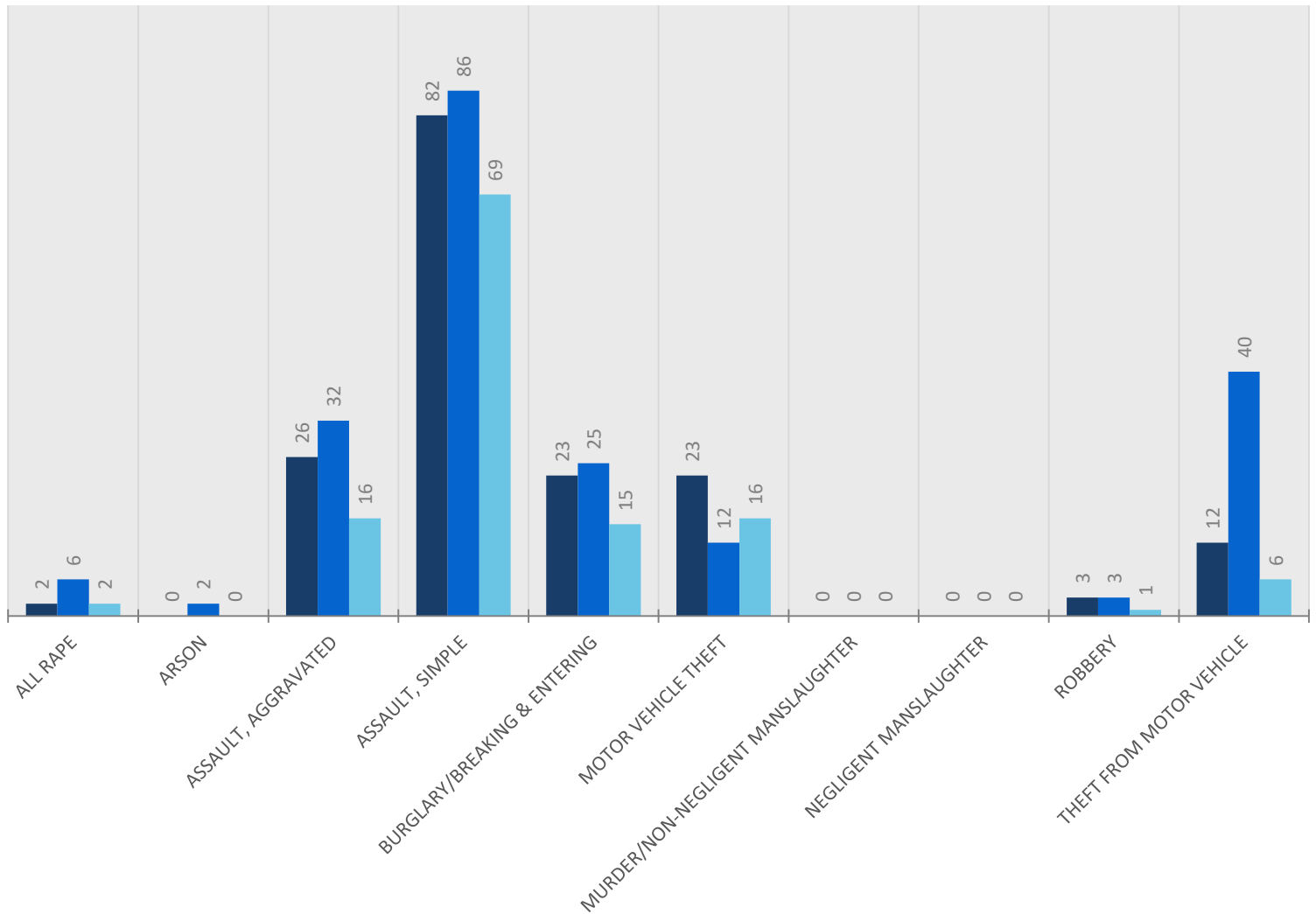


## FARGO POLICE BEAT 2

\* YTD = Jan-Mar of each year

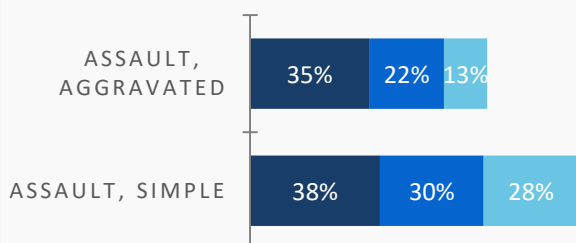
### SELECT GROUP A OFFENSES COUNT OF FARGO PD CASES PER OFFENSE CATEGORY

■ YTD 2023 ■ YTD 2024 ■ YTD 2025



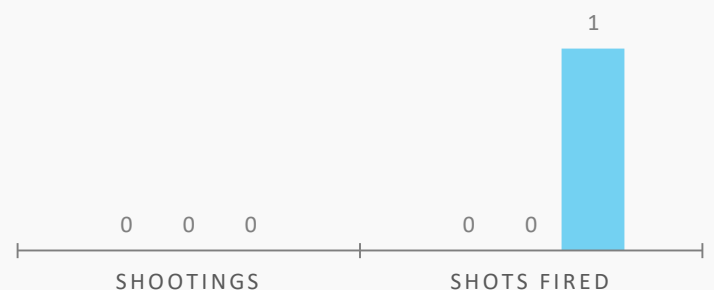
### PERCENTAGE OF ASSAULTS THAT WERE DOMESTIC VIOLENCE RELATED

■ YTD 2023 ■ YTD 2024 ■ YTD 2025



### SHOOTINGS & SHOTS FIRED

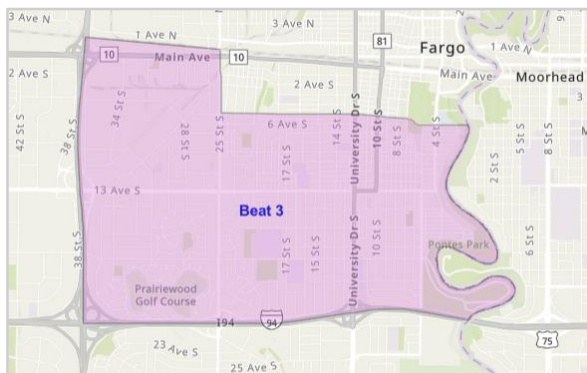
■ YTD 2023 ■ YTD 2024 ■ YTD 2025





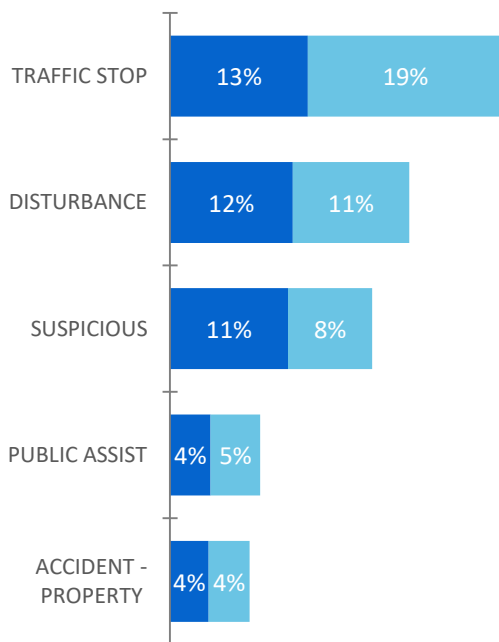
## FARGO POLICE BEAT 3

\* YTD = Jan-Mar of each year



### TOP 5 CFS TYPES

■ YTD 2024 ■ YTD 2025



Feb 2025	Mar 2025	Change		YTD 2024	YTD 2025	YTD Change
1,356	1,470	↑8%	Number of Calls for Service (CFS)	4,314	4,239	↓2%
Group A Case Offenses:						
1	1	N/C	All Rape	5	4	↓ 20%
15	21	↑ 40%	All Other Larceny	51	51	N/C
3	1	↓ 67%	Animal Cruelty	1	5	↑ 400%
0	1	↑ 1	Arson	0	2	↑ 2
4	7	↑ 75%	Assault, Aggravated	20	15	↓ 25%
24	35	↑ 46%	Assault, Simple	89	84	↓ 6%
0	0	N/C	Assisting or Promoting Prostitution	0	0	N/C
0	0	N/C	Betting/Wagering	0	0	N/C
0	0	N/C	Bribery	0	0	N/C
3	16	↑ 433%	Burglary/Breaking & Entering	43	28	↓ 35%
2	1	↓ 50%	Counterfeiting/Forgery	7	11	↑ 57%
0	0	N/C	Credit Card/Automatic Teller Machine Fraud	2	1	↓ 50%
9	8	↓ 11%	Destruction/Damage/Vandalism	59	34	↓ 42%
16	25	↑ 56%	Drug Equipment Violation	118	64	↓ 46%
15	16	↑ 7%	Drug/Narcotic Violations	79	47	↓ 41%
0	0	N/C	Embezzlement	1	0	↓ 1
0	0	N/C	Extortion/Blackmail	0	0	N/C
0	3	↑ 3	Forcible Fondling	5	3	↓ 40%
0	0	N/C	Fraud - Welfare Fraud	0	0	N/C
3	7	↑ 133%	Fraud-False Pretenses/Swindle	23	18	↓ 22%
0	0	N/C	Gambling Equip. Violations	0	0	N/C
0	0	N/C	Hacking/Computer Invasion (Fraud)	0	0	N/C
0	0	N/C	Human Trafficking, Commercial Sex Acts	0	1	↑ 1
0	0	N/C	Human Trafficking, Involuntary Servitude	0	1	↑ 1
4	6	↑ 50%	Identity Theft (Fraud)	12	15	↑ 25%
2	0	↓ 2	Impersonation	0	2	↑ 2
0	0	N/C	Incest	1	0	↓ 1
6	14	↑ 133%	Intimidation	24	29	↑ 21%
0	0	N/C	Kidnapping/Abduction	2	1	↓ 50%
6	6	N/C	Motor Vehicle Theft	30	17	↓ 43%
0	0	N/C	Murder/Non-Negligent Manslaughter	0	0	N/C
0	0	N/C	Negligent Manslaughter	0	0	N/C
0	0	N/C	Operating/Promoting/ Assisting Gambling	0	0	N/C
0	0	N/C	Pocket Picking	0	0	N/C
0	0	N/C	Pornography/Obscene Material	2	3	↑ 50%
0	0	N/C	Prostitution	0	0	N/C
0	0	N/C	Purchasing Prostitution	0	0	N/C
0	0	N/C	Purse Snatching	1	0	↓ 1
1	1	N/C	Robbery	4	2	↓ 50%
14	22	↑ 57%	Shoplifting	44	49	↑ 11%
0	0	N/C	Sports Tampering	0	0	N/C
3	1	↓ 67%	Stalking	4	7	↑ 75%
0	0	N/C	Statutory Rape	0	1	↑ 1
0	5	↑ 5	Stolen Property Offenses	14	8	↓ 43%
1	2	↑ 100%	Theft from Building	4	5	↑ 25%
0	0	N/C	Theft from Coin Operated Machine or Device	0	0	N/C
2	6	↑ 200%	Theft from Motor Vehicle	60	12	↓ 80%
0	0	N/C	Theft of Motor Vehicle Parts or Accessories	0	0	N/C
2	2	N/C	Weapon Law Violations	7	6	↓ 14%
0	0	N/C	Wire Fraud	3	1	↓ 67%
136	207	↑ 52%	TOTAL	715	527	↓ 26%

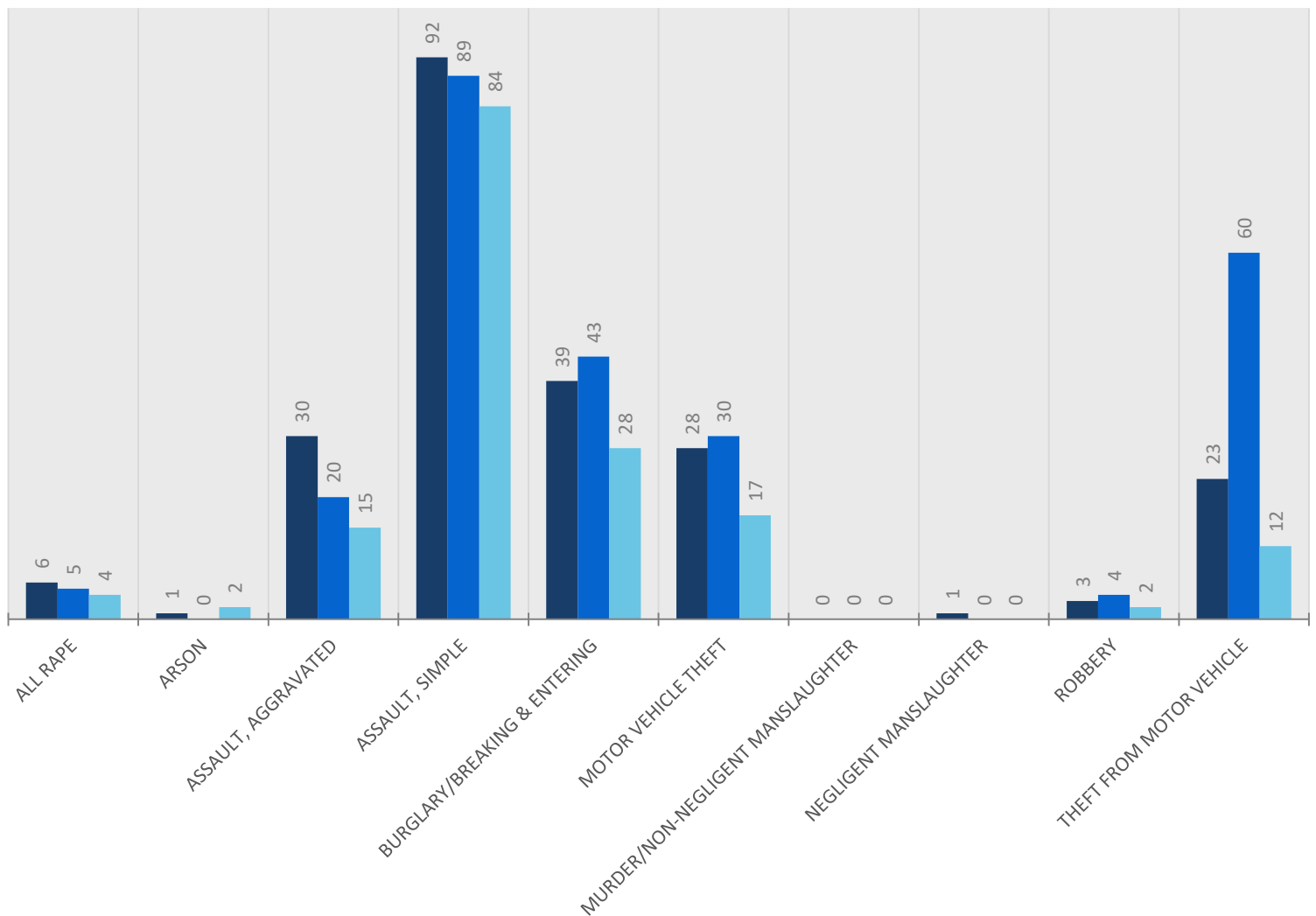


## FARGO POLICE BEAT 3

\* YTD = Jan-Mar of each year

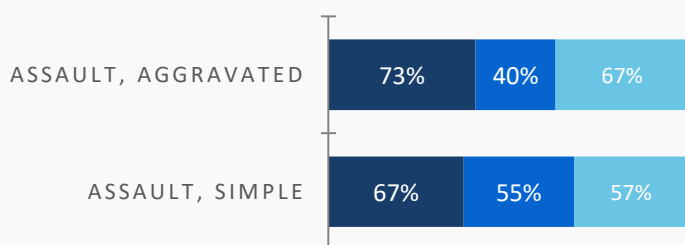
### SELECT GROUP A OFFENSES COUNT OF FARGO PD CASES PER OFFENSE CATEGORY

■ YTD 2023 ■ YTD 2024 ■ YTD 2025



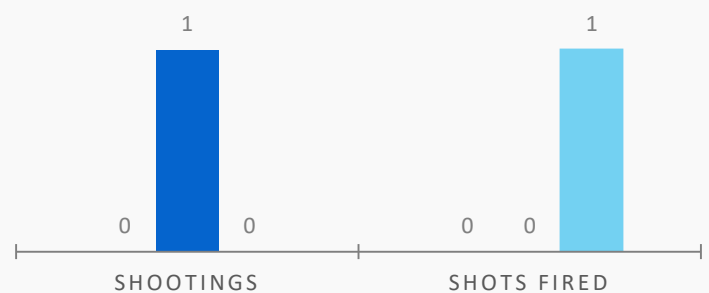
### PERCENTAGE OF ASSAULTS THAT WERE DOMESTIC VIOLENCE RELATED

■ YTD 2023 ■ YTD 2024 ■ YTD 2025



### SHOOTINGS & SHOTS FIRED

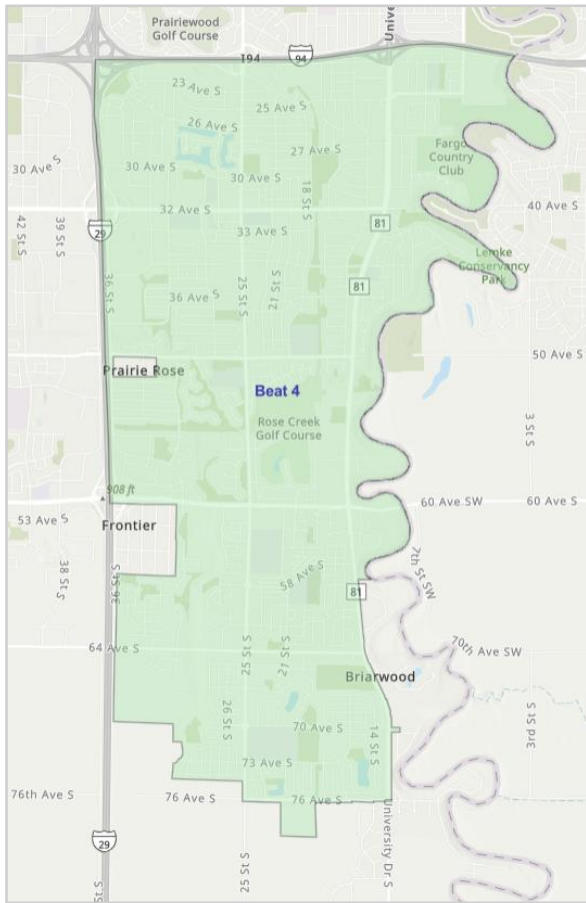
■ YTD 2023 ■ YTD 2024 ■ YTD 2025





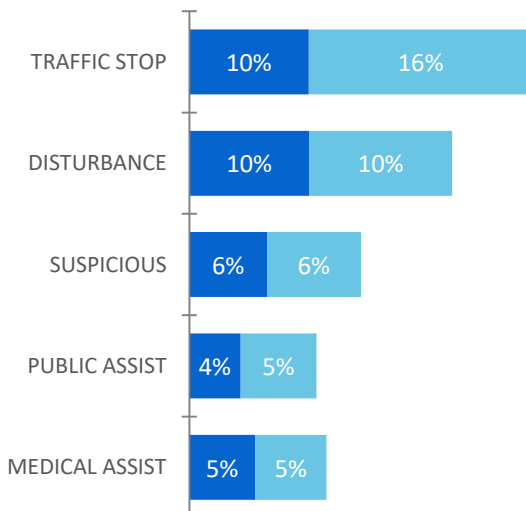
## FARGO POLICE BEAT 4

\* YTD = Jan-Mar of each year



### TOP 5 CFS TYPES

■ YTD 2024 ■ YTD 2025



Feb 2025	Mar 2025	Change		YTD 2024	YTD 2025	YTD Change
1,169	1,316	↑13%	Number of Calls for Service (CFS)	3,044	3,657	↑20%
Group A Case Offenses:						
1	0	↓ 1	All Rape	10	4	↓ 60%
15	12	↓ 20%	All Other Larceny	61	42	↓ 31%
1	0	↓ 1	Animal Cruelty	1	1	N/C
0	0	N/C	Arson	0	0	N/C
3	3	N/C	Assault, Aggravated	18	8	↓ 56%
28	25	↓ 11%	Assault, Simple	75	78	↑ 4%
0	0	N/C	Assisting or Promoting Prostitution	0	0	N/C
0	0	N/C	Betting/Wagering	0	0	N/C
0	0	N/C	Bribery	0	0	N/C
7	13	↑ 86%	Burglary/Breaking & Entering	40	37	↓ 8%
7	0	↓ 7	Counterfeiting/Forgery	9	12	↑ 33%
0	0	N/C	Credit Card/Automatic Teller Machine Fraud	4	2	↓ 50%
3	6	↑ 100%	Destruction/Damage/Vandalism	30	14	↓ 53%
12	6	↓ 50%	Drug Equipment Violation	16	26	↑ 63%
5	4	↓ 20%	Drug/Narcotic Violations	11	15	↑ 36%
0	0	N/C	Embezzlement	0	0	N/C
1	1	N/C	Extortion/Blackmail	1	2	↑ 100%
3	1	↓ 67%	Forcible Fondling	6	5	↓ 17%
0	0	N/C	Fraud - Welfare Fraud	0	0	N/C
3	0	↓ 3	Fraud-False Pretenses/Swindle	7	7	N/C
0	0	N/C	Gambling Equip. Violations	0	0	N/C
0	0	N/C	Hacking/Computer Invasion (Fraud)	0	0	N/C
0	0	N/C	Human Trafficking, Commercial Sex Acts	0	0	N/C
0	1	↑ 1	Human Trafficking, Involuntary Servitude	0	1	↑ 1
4	1	↓ 75%	Identity Theft (Fraud)	9	8	↓ 11%
0	0	N/C	Impersonation	2	1	↓ 50%
0	0	N/C	Incest	0	0	N/C
6	7	↑ 17%	Intimidation	17	19	↑ 12%
0	0	N/C	Kidnapping/Abduction	2	0	↓ 2
10	9	↓ 10%	Motor Vehicle Theft	16	22	↑ 38%
0	0	N/C	Murder/Non-Negligent Manslaughter	0	0	N/C
0	0	N/C	Negligent Manslaughter	0	0	N/C
0	0	N/C	Operating/Promoting/ Assisting Gambling	0	0	N/C
1	0	↓ 1	Pocket Picking	0	1	↑ 1
3	2	↓ 33%	Pornography/Obscene Material	3	7	↑ 133%
0	0	N/C	Prostitution	0	0	N/C
0	0	N/C	Purchasing Prostitution	0	0	N/C
0	0	N/C	Purse Snatching	0	0	N/C
2	0	↓ 2	Robbery	3	2	↓ 33%
10	11	↑ 10%	Shoplifting	18	36	↑ 100%
0	0	N/C	Sports Tampering	0	0	N/C
0	0	N/C	Stalking	1	0	↓ 1
0	0	N/C	Statutory Rape	0	0	N/C
0	1	↑ 1	Stolen Property Offenses	4	3	↓ 25%
3	2	↓ 33%	Theft from Building	3	5	↑ 67%
0	0	N/C	Theft from Coin Operated Machine or Device	0	0	N/C
5	5	N/C	Theft from Motor Vehicle	21	18	↓ 14%
0	0	N/C	Theft of Motor Vehicle Parts or Accessories	0	0	N/C
1	0	↓ 1	Weapon Law Violations	4	1	↓ 75%
0	0	N/C	Wire Fraud	0	0	N/C
134	110	↓ 18%	TOTAL	392	377	↓ 4%

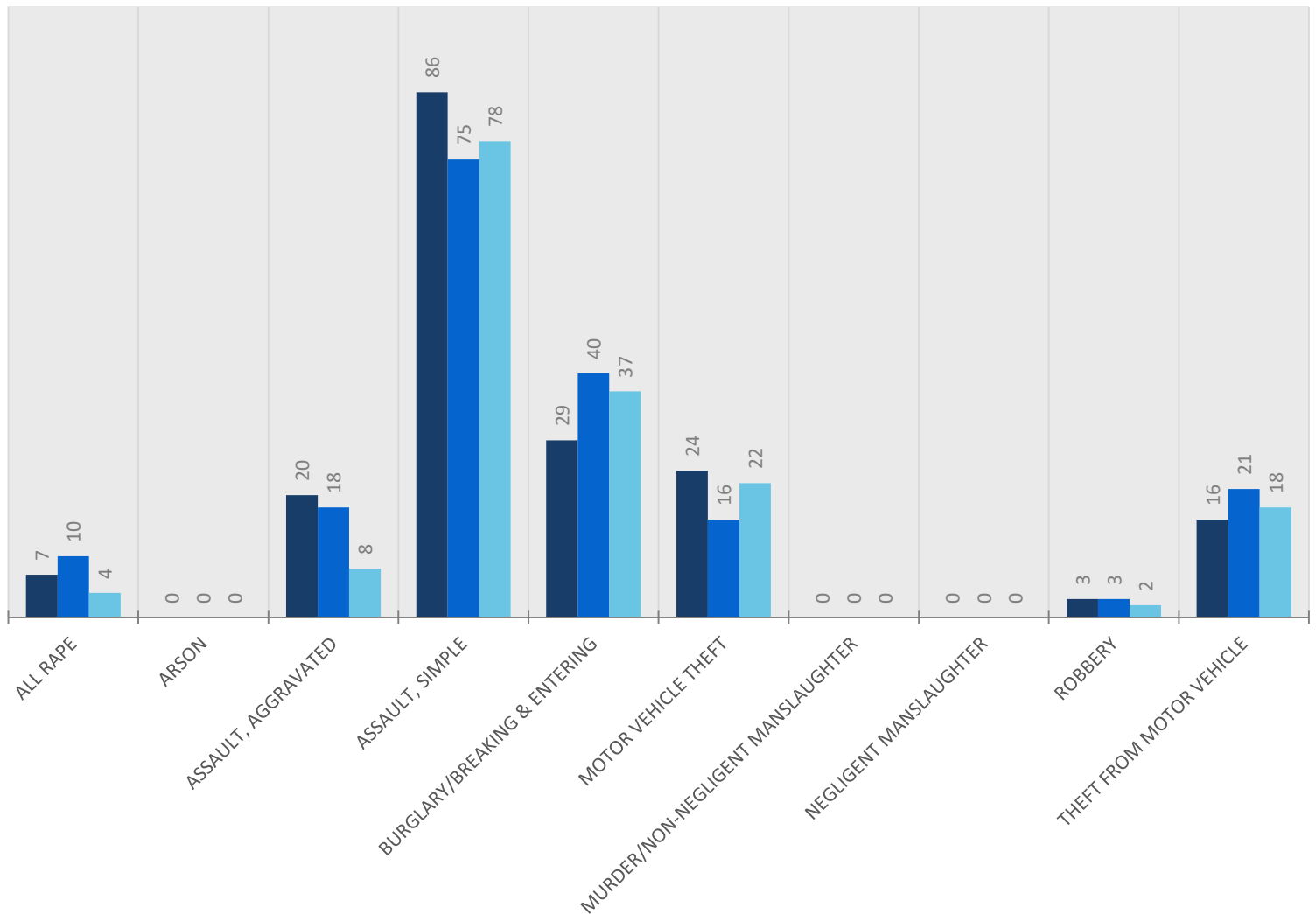


## FARGO POLICE BEAT 4

\* YTD = Jan-Mar of each year

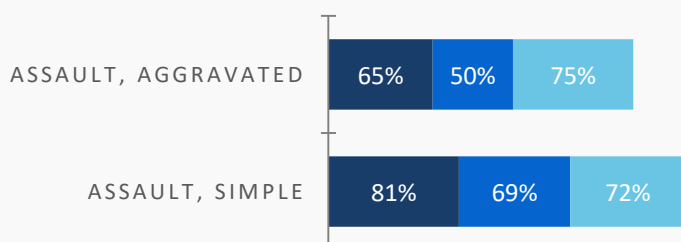
### SELECT GROUP A OFFENSES COUNT OF FARGO PD CASES PER OFFENSE CATEGORY

■ YTD 2023 ■ YTD 2024 ■ YTD 2025



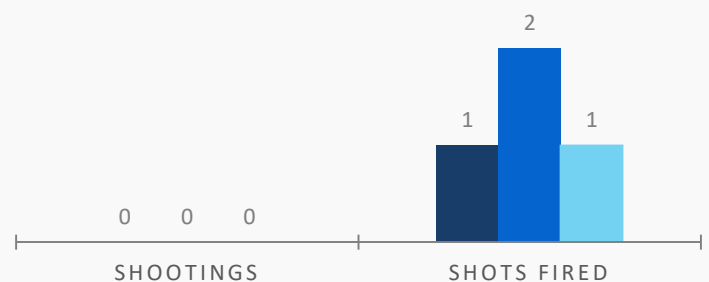
### PERCENTAGE OF ASSAULTS THAT WERE DOMESTIC VIOLENCE RELATED

■ YTD 2023 ■ YTD 2024 ■ YTD 2025



### SHOOTINGS & SHOTS FIRED

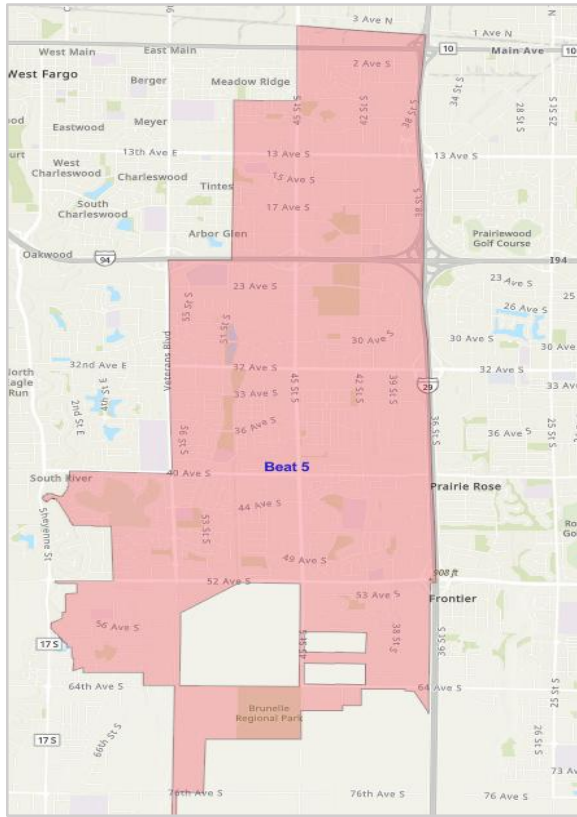
■ YTD 2023 ■ YTD 2024 ■ YTD 2025





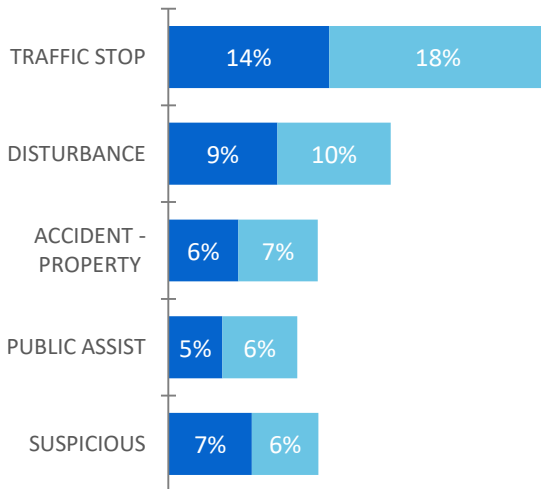
## FARGO POLICE BEAT 5

\* YTD = Jan-Mar of each year



### TOP 5 CFS TYPES

■ YTD 2024 ■ YTD 2025



Feb 2025	Mar 2025	Change		YTD 2024	YTD 2025	YTD Change
1,739	2,137	↑23%	Number of Calls for Service (CFS)	5,577	5,688	↑2%
Group A Case Offenses:						
2	2	N/C	All Rape	8	9	↑ 13%
31	26	↓ 16%	All Other Larceny	145	82	↓ 43%
0	0	N/C	Animal Cruelty	0	0	N/C
0	2	↑ 2	Arson	0	2	↑ 2
1	6	↑ 500%	Assault, Aggravated	22	11	↓ 50%
35	48	↑ 37%	Assault, Simple	121	117	↓ 3%
0	0	N/C	Assisting or Promoting Prostitution	0	0	N/C
0	0	N/C	Betting/Wagering	0	0	N/C
0	0	N/C	Bribery	0	0	N/C
10	9	↓ 10%	Burglary/Breaking & Entering	95	31	↓ 67%
11	4	↓ 64%	Counterfeiting/Forgery	13	17	↑ 31%
0	0	N/C	Credit Card/Automatic Teller Machine Fraud	3	0	↓ 3
10	25	↑ 150%	Destruction/Damage/Vandalism	72	50	↓ 31%
7	13	↑ 86%	Drug Equipment Violation	50	29	↓ 42%
12	8	↓ 33%	Drug/Narcotic Violations	40	27	↓ 33%
1	0	↓ 1	Embezzlement	5	1	↓ 80%
1	2	↑ 100%	Extortion/Blackmail	1	4	↑ 300%
0	1	↑ 1	Forcible Fondling	6	5	↓ 17%
0	0	N/C	Fraud - Welfare Fraud	0	0	N/C
5	9	↑ 80%	Fraud-False Pretenses/Swindle	13	20	↑ 54%
0	0	N/C	Gambling Equip. Violations	0	0	N/C
0	0	N/C	Hacking/Computer Invasion (Fraud)	0	0	N/C
0	0	N/C	Human Trafficking, Commercial Sex Acts	0	0	N/C
0	0	N/C	Human Trafficking, Involuntary Servitude	0	0	N/C
11	8	↓ 27%	Identity Theft (Fraud)	20	27	↑ 35%
0	0	N/C	Impersonation	1	0	↓ 1
0	0	N/C	Incest	0	0	N/C
5	12	↑ 140%	Intimidation	38	24	↓ 37%
0	0	N/C	Kidnapping/Abduction	2	1	↓ 50%
10	6	↓ 40%	Motor Vehicle Theft	24	24	N/C
0	0	N/C	Murder/Non-Negligent Manslaughter	1	0	↓ 1
0	0	N/C	Negligent Manslaughter	0	0	N/C
0	0	N/C	Operating/Promoting/ Assisting Gambling	0	0	N/C
0	0	N/C	Pocket Picking	0	0	N/C
2	2	N/C	Pornography/Obscene Material	6	6	N/C
0	0	N/C	Prostitution	0	0	N/C
0	0	N/C	Purchasing Prostitution	0	0	N/C
0	1	↑ 1	Purse Snatching	1	3	↑ 200%
1	1	N/C	Robbery	7	5	↓ 29%
48	57	↑ 19%	Shoplifting	182	155	↓ 15%
0	0	N/C	Sports Tampering	0	0	N/C
3	3	N/C	Stalking	8	6	↓ 25%
0	1	↑ 1	Statutory Rape	1	2	↑ 100%
3	4	↑ 33%	Stolen Property Offenses	13	8	↓ 38%
1	2	↑ 100%	Theft from Building	9	5	↓ 44%
0	0	N/C	Theft from Coin Operated Machine or Device	0	0	N/C
11	11	N/C	Theft from Motor Vehicle	61	34	↓ 44%
1	1	N/C	Theft of Motor Vehicle Parts or Accessories	6	2	↓ 67%
0	1	↑ 1	Weapon Law Violations	5	1	↓ 80%
0	1	↑ 1	Wire Fraud	0	2	↑ 2
222	266	↑ 20%	TOTAL	979	710	↓ 27%



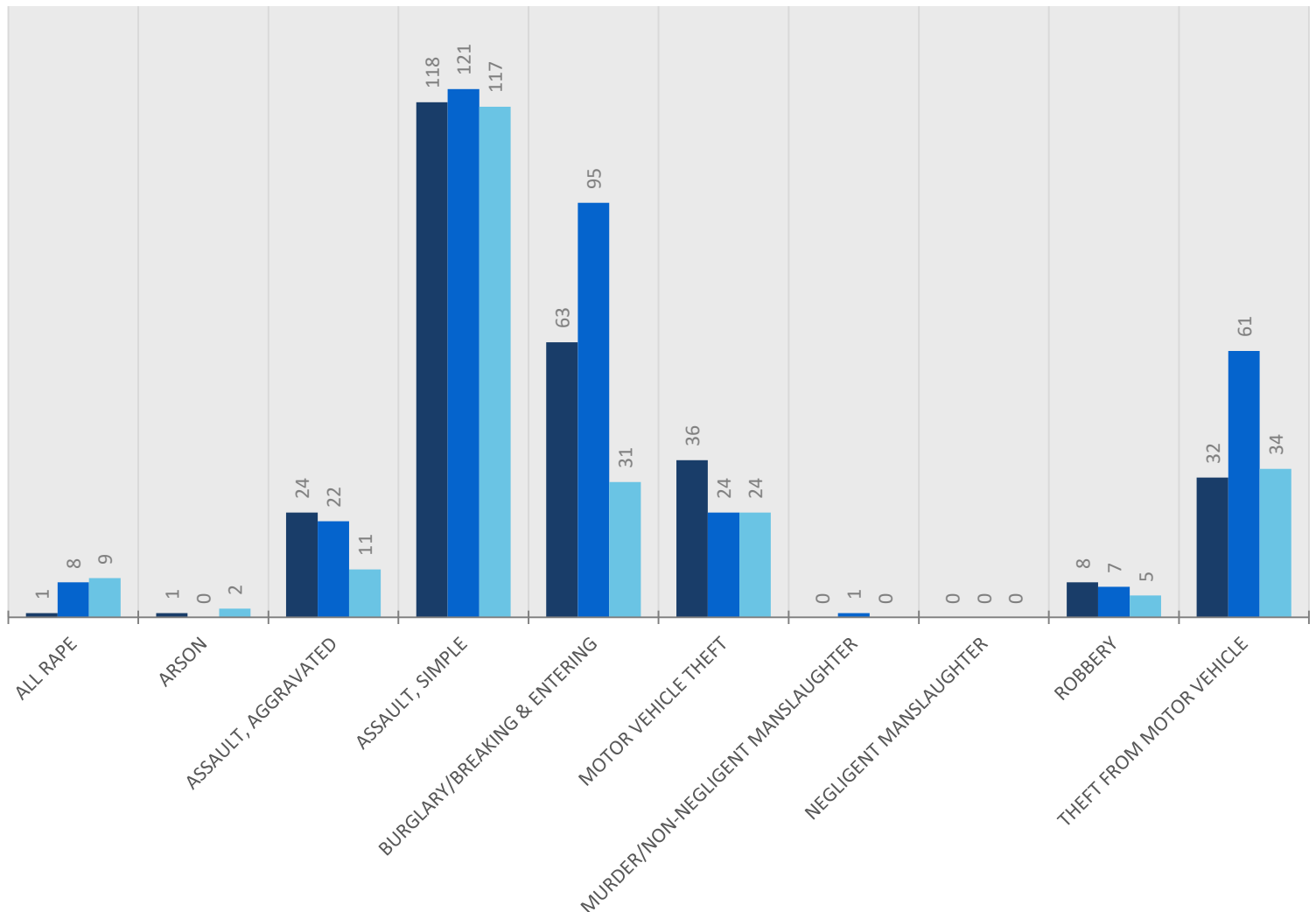


## FARGO POLICE BEAT 5

\* YTD = Jan-Mar of each year

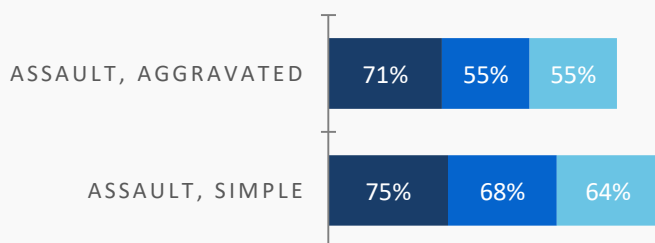
### SELECT GROUP A OFFENSES COUNT OF FARGO PD CASES PER OFFENSE CATEGORY

■ YTD 2023 ■ YTD 2024 ■ YTD 2025



### PERCENTAGE OF ASSAULTS THAT WERE DOMESTIC VIOLENCE RELATED

■ YTD 2023 ■ YTD 2024 ■ YTD 2025



### SHOOTINGS & SHOTS FIRED

■ YTD 2023 ■ YTD 2024 ■ YTD 2025

