

Accessibility Handout



A Guide to the City of Fargo's Accessibility Code

For Specific details, refer to Chapter 11 of the IBC and the referenced ANSI Standard A117.1 in that chapter.

The following are illustrations regarding some of the more frequently asked questions regarding accessibility and should be used as supportive information only.

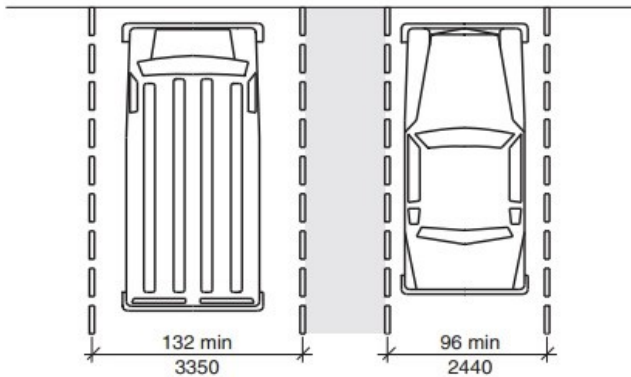
This is *not* intended to be all-encompassing review of accessibility standards or ADA standards. It is your responsibility to establish compliance. For specific details on these requirements, refer to Chapter 11 of the International Building Code and the ANSI Standard A117.1 referenced in that chapter.

Parking Spaces	- 4 -
Vehicle Parking Space Size.....	- 4 -
Parking Space Access Aisle	- 4 -
Parking Signage	- 4 -
Wheel Chair Turning Space	- 4 -
Circular Space	- 4 -
T Shaped Space—3 Options	- 4 -
Protruding Objects.....	- 5 -
Reach Ranges	- 6 -
Clear Floor Space at Lavatories	- 6 -
Maneuvering Clearance at Swinging Doors	- 6 -
Clear Width of Accessible Route	- 6 -
Clear Width of Doors	- 6 -
Maneuvering Clearances at Manual Swinging Door and Gates	- 7 -
Two Doors in Series	- 8 -
Curb or Barrier Edge Protection	- 9 -
Handrail Extensions	- 9 -
Drinking Fountains and Bottle Filling Stations	- 10 -
Water Closets.....	- 11 -
Door Opening Location for Toilet Compartments	- 13 -
Height of Lavatories and Sinks.....	- 13 -

Parking Spaces

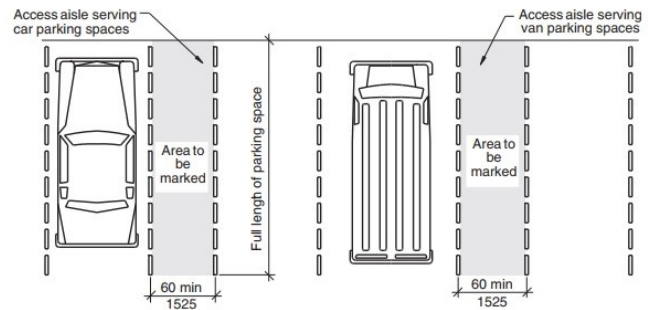
502.2

Vehicle Parking Space Size



Van parking spaces shall be permitted to be 96 inches minimum in width where the adjacent access aisle is 96 inches minimum in width; however aisle space is then increased to 96 inches.

Parking Space Access Aisle



Signs shall include the International Symbol of Accessibility along with the violation fee sign. Signs identifying van parking spaces shall contain the designation "van accessible."

Parking Signage



Signs designating parking places for disabled people shall be mounted high enough above the ground and located at the front of a parking space to be seen from a driver's seat of the vehicle.

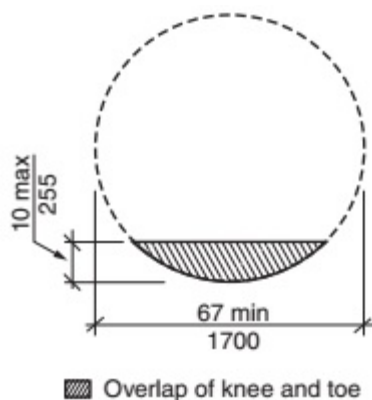


Such signs shall be 60 inches minimum above the floor of the parking space, measured to the bottom of the sign

Wheel Chair Turning Space

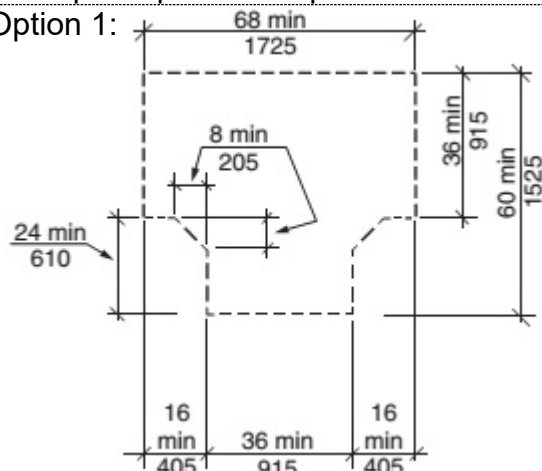
303

Circular Space

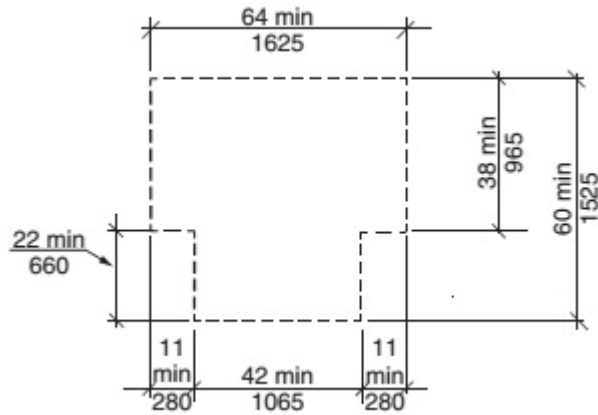


T Shaped Space—3 Options

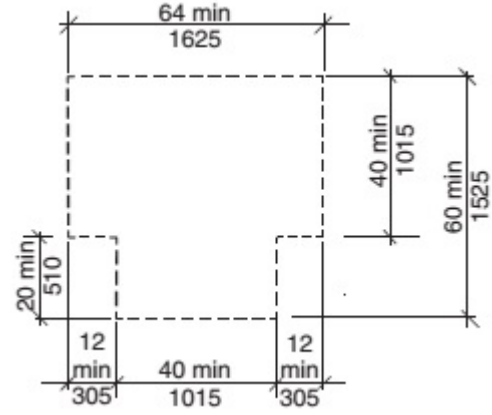
Option 1:



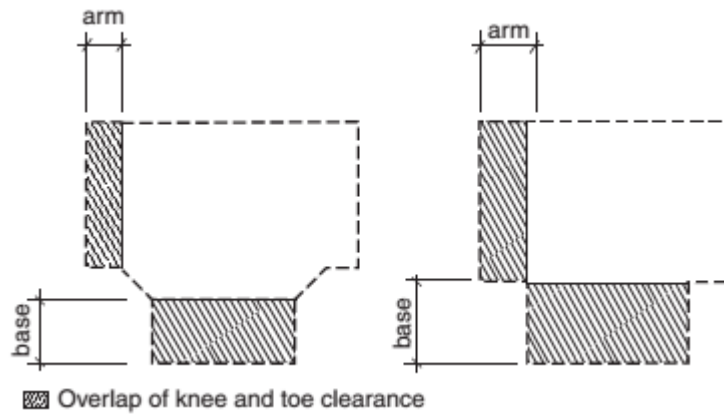
Option 2:



Option 3:

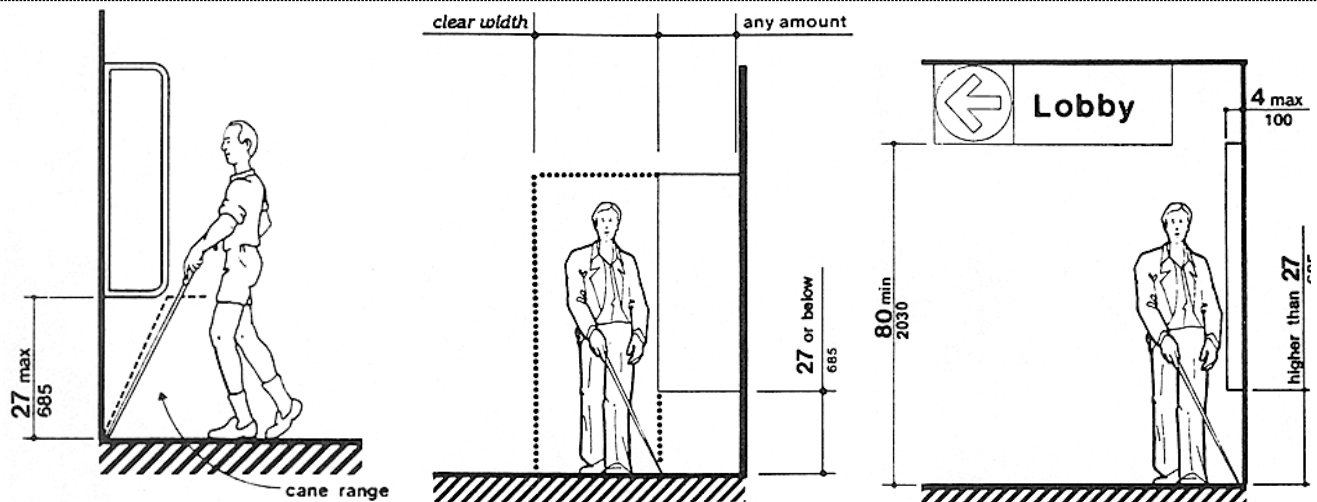


Allowable Overlap:



Protruding Objects

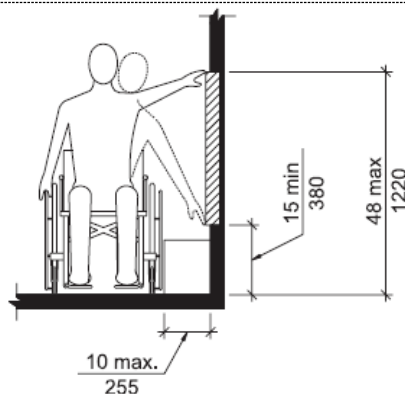
307



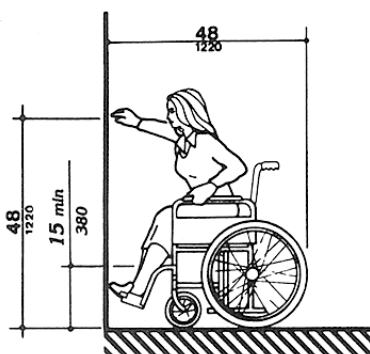
Reach Ranges

Section 308

Side Reach Limits



Front Reach Limits



Storage Shelves and Closets

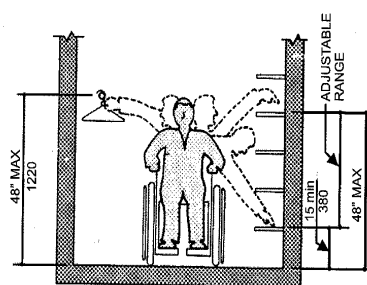
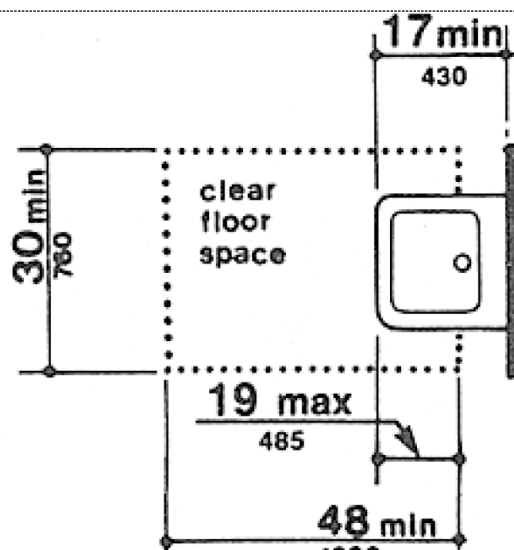
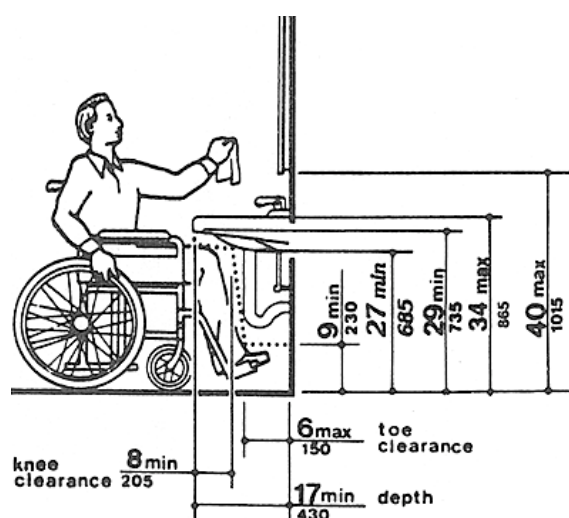


Figure 73. Storage Shelves and Closets

Clear Floor Space at Lavatories



Maneuvering Clearance at Swinging Doors

404.2.3

Clear Width of Accessible Route

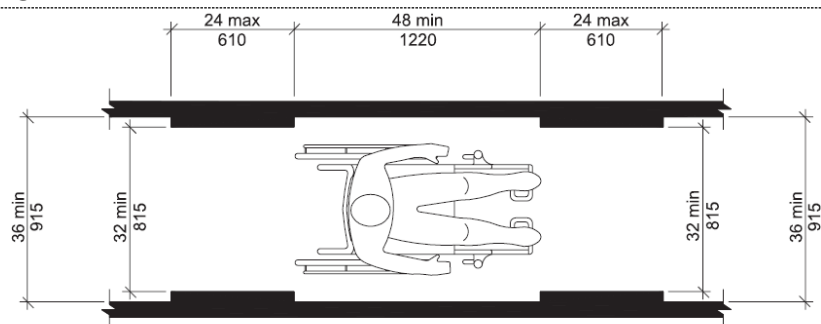
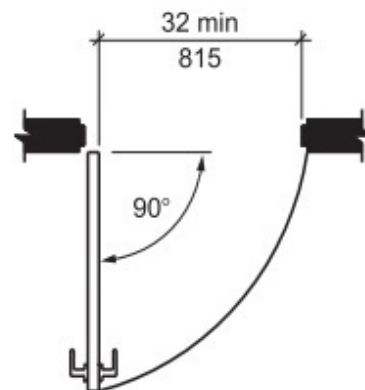


Fig. 403.5
Clear Width of an Accessible Route

Clear Width of Doors



Maneuvering Clearances at Manual Swinging Door and Gates

Type of Use		Minimum Maneuvering Clearances (beyond latch unless otherwise noted)	
Approach Direction	Door or Gate Side	Perpendicular	Parallel
From front	Pull	60 inches	18 inches
From front	Push	52 inches ⁵	0 inches ³
From hinge side	Pull	60 inches	36 inches
From hinge side	Pull	54 inches	42 inches
From hinge side	Push	42 inches ¹	22 inches ⁴
From latch side	Pull	48 inches ²	24 inches
From latch side	Push	42 inches ²	24 inches

¹ Add 6 inches if closer and latch provided

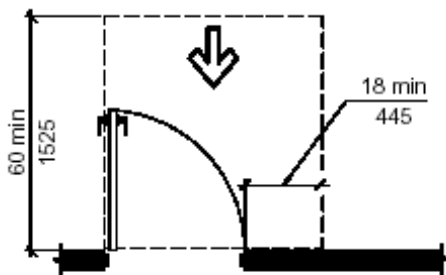
² Add 6 inches if closer provided

³ Add 12 inches beyond latch if closer and latch provided

⁴ Beyond hinge side

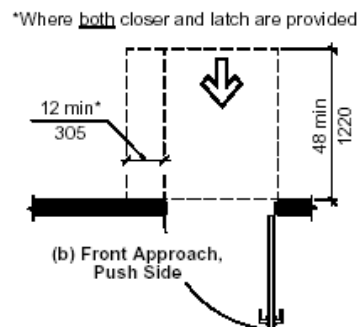
⁵ In existing buildings and facilities, the dimension perpendicular to the door or gate for the front direction of the push side shall be 48 inches minimum.

Front Approach, Pull Side



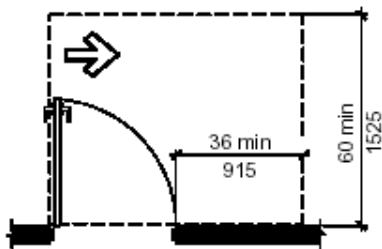
(a) Front Approach, Pull Side

Front Approach, Push Side



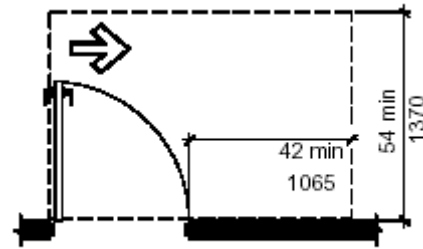
(b) Front Approach, Push Side

Hinge Approach, Pull Side



(c) Hinge Approach, Pull Side

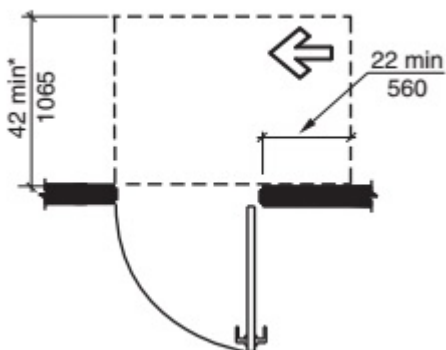
Hinge Approach, Push Side



(d) Hinge Approach, Push Side

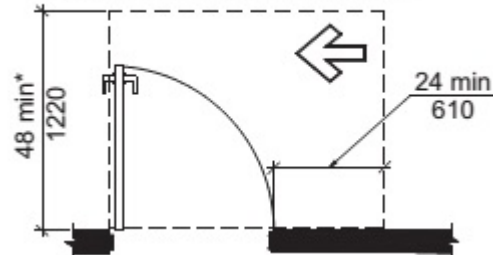
Latch Approach, Pull Side

* 48 min (1220) if both closer and latch provided

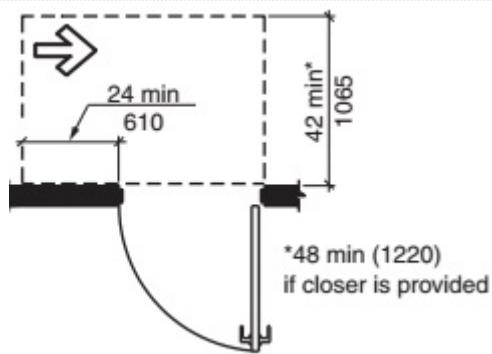


Latch Approach, Push Side

*54 min (1370) if closer is provided



Latch Approach, Push Side



Two Doors in Series 404.2.5

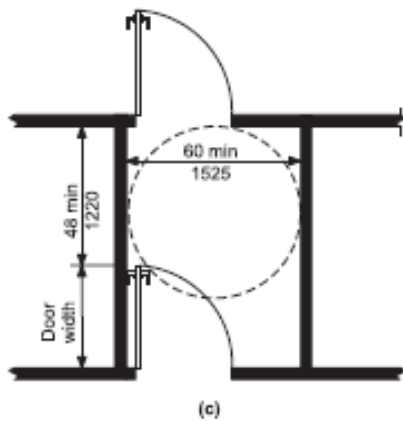


Fig. 404.2.5
Two Doors In a Series

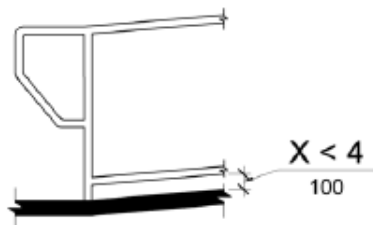
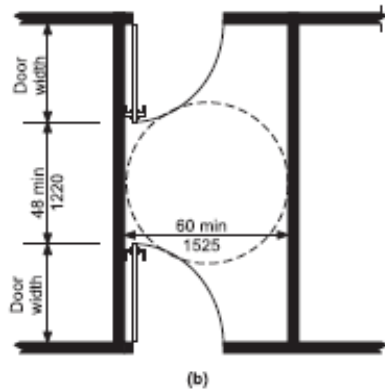
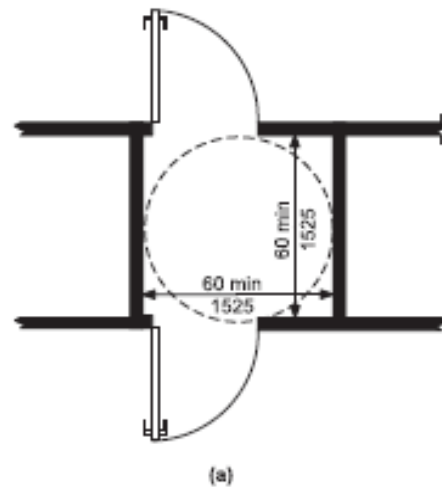
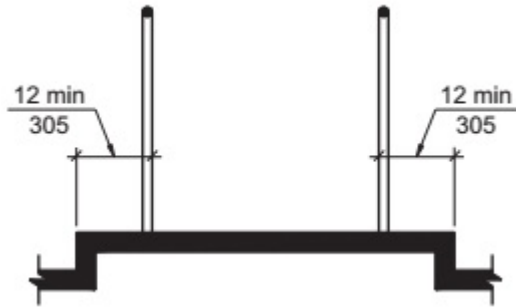


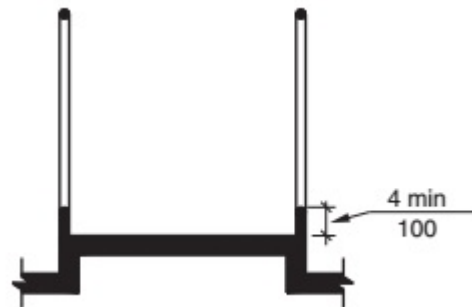
Figure 405.9.2
Curb or Barrier Edge Protection

Curb or Barrier Edge Protection 405.9.2

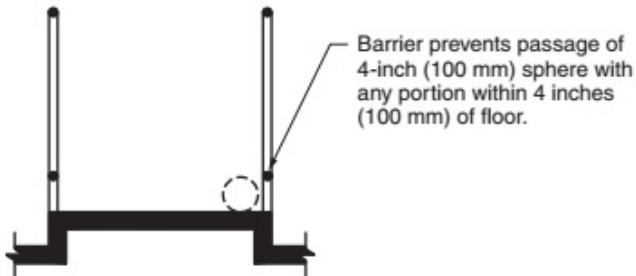
Extended Floor Surface:



Curb:

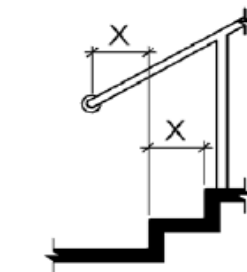
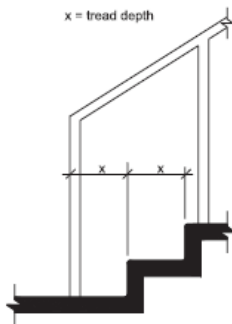


Barrier:



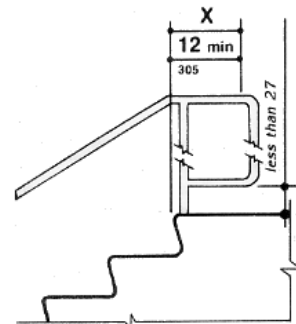
Handrail Extensions 505.10

Bottom Handrail Extension at Stairs



Note: X = tread depth

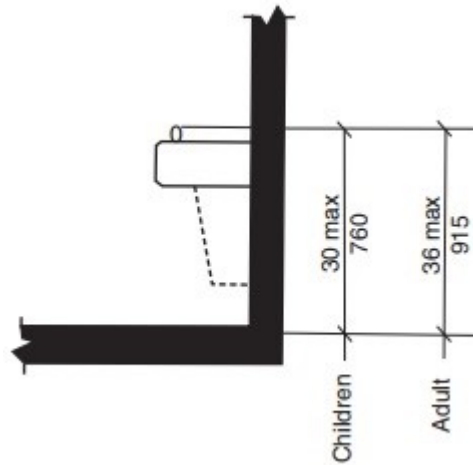
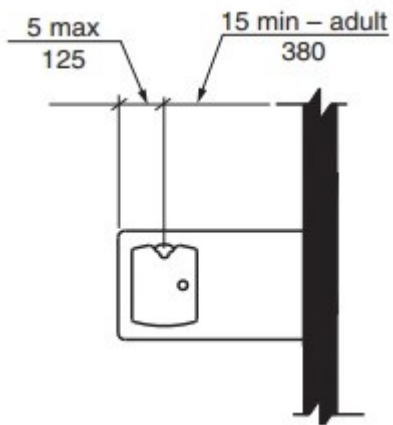
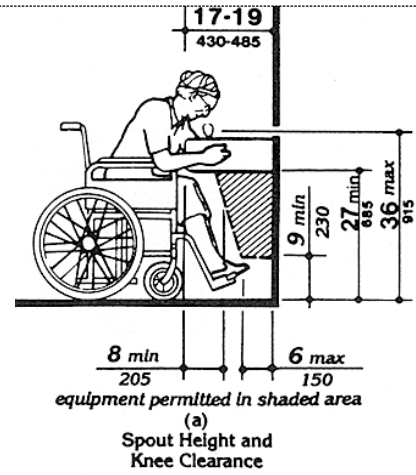
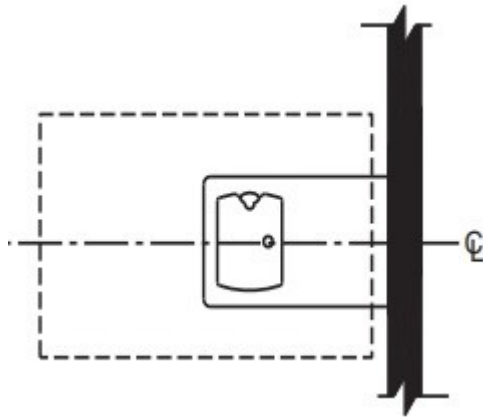
Top Handrail Extensions at Stairs



Drinking Fountains and Bottle Filling Stations

Section 602.2

Clear Floor Space (per Section 306 and 307)

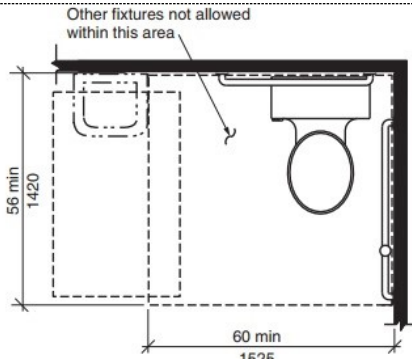


Water Closets Section 604

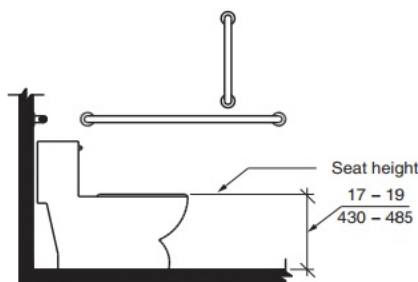
Floors and wall base finish materials shall have a smooth, hard, nonabsorbent surface which extends upward onto the walls not less than 4 inches. Walls and partitions within 2 feet of service sinks, urinals and water closets shall have a smooth, hard, nonabsorbent surface, to a height of not less than 4 feet above the floor.

Note that fixtures primarily for children's use have different requirements. See Section 604.11.

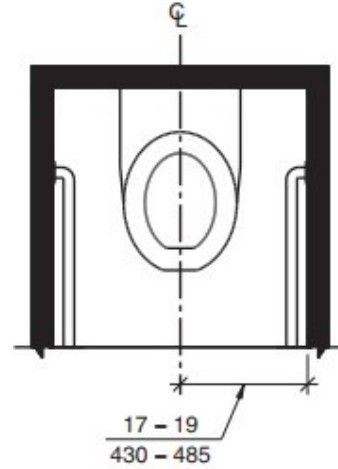
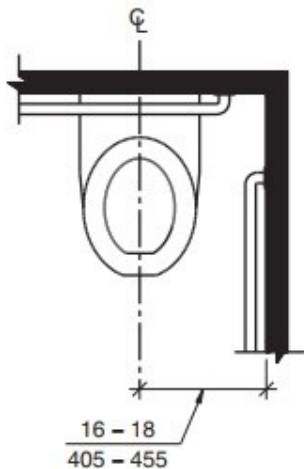
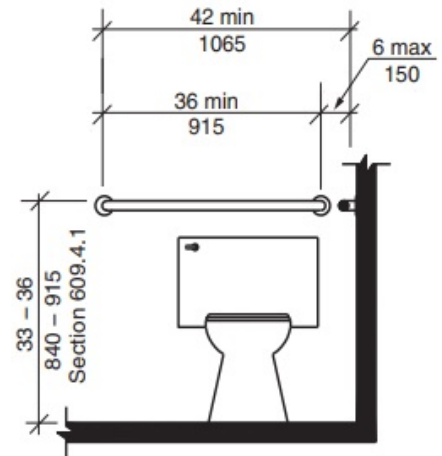
Size of Clearance for Water Closets



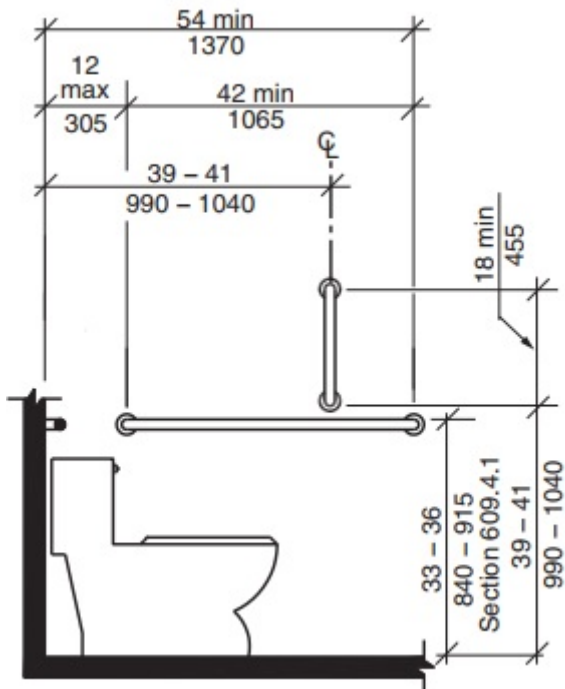
Height of Water Closet



Grab Bars at Water Closets—Back Wall

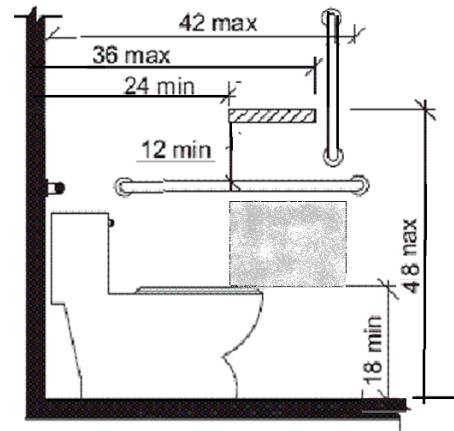


Grab Bars at Water Closets—Side Wall

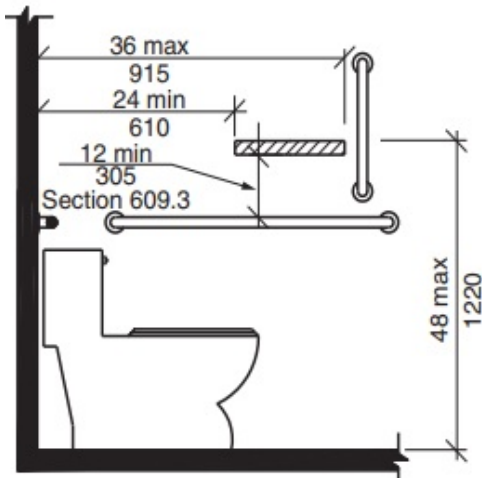


Dispenser Locations

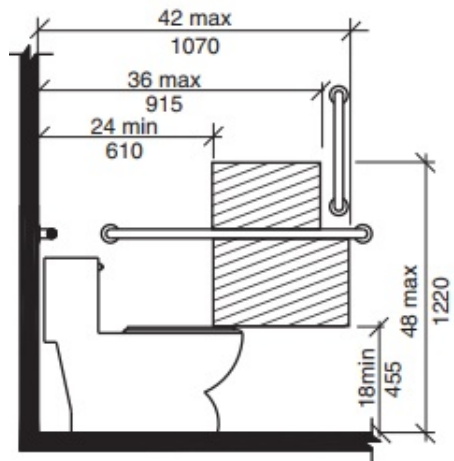
Below the Grab Bar:



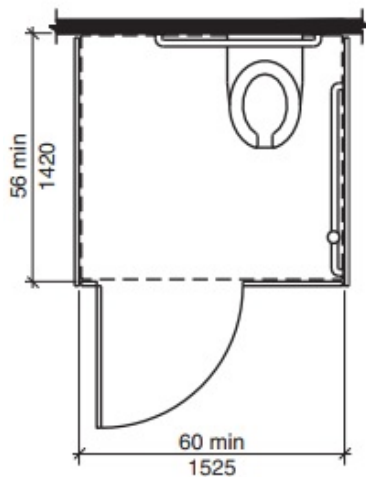
Above the Grab Bar:



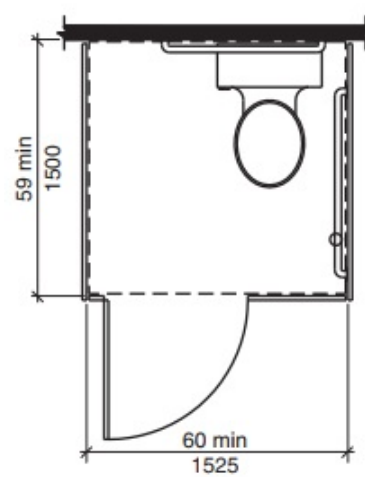
Recessed Dispenser:



Wall-Hung Water Closet Compartment



Floor Mounted Water Closet Compartment



Door Opening Location for Toilet Compartments

Door Opening Location	Measured From	Dimension
Front Wall or Partition	From the side wall or partition closest to the water closet	56 inches minimum
	OR	
	From the side wall or partition farthest from the water closet	4 inches maximum
Side Wall or Partition Wall-Hung Water Closet	From the rear wall	52 inches minimum
	OR	
	From the front wall or partition	4 inches maximum
Side Wall or Partition Floor-Mounted Water Closet	From the rear wall	56 inches minimum
	OR	
	From the front wall or partition	4 inches maximum

Height of Lavatories and Sinks Section 606.3

