



Report References

The following report is using data that has been extracted from the Fargo Police Department Law Enforcement Records Management System.

Number of Calls for Service

Calls for Service per Beat is a count of all criminal and non-criminal calls for service.

- Calls for Service may be community generated or officer-initiated calls.
- Calls for Service include reports completed by citizens using the online reporting system (DORS).
- Calls for Service may be handled by Officers in the field or over the phone.
- Calls for Service do not always result in a police case report being taken, and may not involve any criminal offenses/charges.

Case Offenses

Case Offenses per Beat is a count of case reports in which a NIBRS defined Group A Offense was reported.

- Group A Offenses are defined by the FBI's National Incident-Based Reporting System (NIBRS), and does *not* include all possible criminal offense categories.
- Cases with multiple Group A Offenses reported are counted in *each* of the offense categories.
- The offense category "All Rape" includes Forcible Rape, Forcible Sodomy, and Sexual Assault with an Object. (Statutory Rape and Forcible Fondling are their own category)
- Case offenses may be added, removed, or be re-categorized if or when the case information changes throughout the course of an investigation. Thus, you may see both current and historic numbers change over time.
 - For example, when a victim is shot but not killed, the offense is categorized as an Aggravated Assault. If the victim later dies, the offense is then re-categorized as a Murder/Non-Negligent Manslaughter. Another example is if a citizen reports their vehicle as stolen, the offense is categorized as a Motor Vehicle Theft. If the citizen later discovers their vehicle had actually been towed and was *not* stolen, the case becomes 'unfounded' and therefor the Motor Vehicle Theft offense is no longer counted.

Shootings & Shots Fired Cases (data manually tracked by Fargo PD Intelligence & Analysis Unit)

Shootings per Beat is a count of cases where a victim sustains injuries due to the use of a firearm, but is not killed.

- The offense in these cases are categorized as an Aggravated Assault.
- If a shooting victim is killed, the case is NOT counted as a Shooting, and the offense is categorized as a Murder/Non-Negligent Manslaughter.

Shots Fired per Beat is a count of cases where gun shots were both reported AND confirmed by evidence such as, locating ammunition casings and/or damage to property or structures due to a firearm.

- Shots Fired cases do NOT result in any reported injuries.



November Crime Data – Analysts Notes:

Citywide

- Calls for Service (CFS) were **down 13%** from October to November, however are **up 5%** year-to-date in 2025—an increase of approximately **4,283 CFS** compared to the same time period last year. A significant contributor to this rise is a 44% increase in Traffic Stops, which alone added **4,248 CFS** in 2025. Additionally, the following CFS categories have shown the most notable increases compared to 2024:

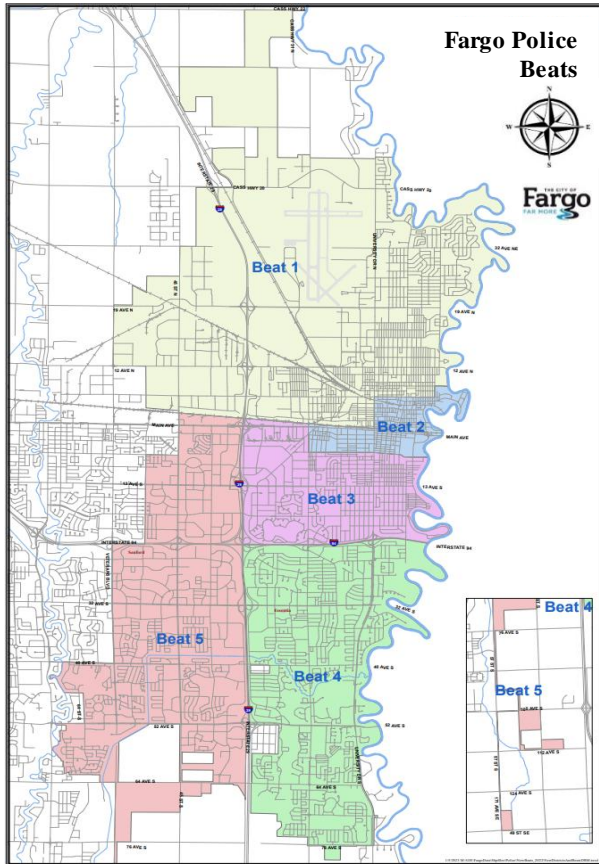
CFS Type	2024	2025	CountDiff	%Chng
Traffic Stop	9,629	13,877	4,248	↑ 44%
Public Assist	4,972	5,683	711	↑ 14%
Field Contact	472	1,038	566	↑ 120%
Shoplifting	1,356	1,759	403	↑ 30%
Traffic Complaint	1,476	1,786	310	↑ 21%
Parking Complaint	2,490	2,686	196	↑ 8%
Form - 960	56	221	165	↑ 295%
Missing Person	934	1,055	121	↑ 13%
Juvenile Complaint	828	935	107	↑ 13%
Fraud	1,050	1,148	98	↑ 9%
Impaired Person	2,138	2,223	85	↑ 4%
Stop Arm Violation	2	50	48	↑ 2,400%

- Shootings are **down 44%** year-to-date in 2025 compared to the same time period last year, with 60%—or 3 of the 5 cases cleared by arrest. Shots Fired incidents are also **down 32%** compared to the same time period last year, with 41%—or 7 of the 17 cases cleared by arrest.
- Overall Group A Offenses were **down 13%** from October to November and are also **down 10%** year-to-date in 2025—which is a notable decrease of approximately **1,239** offenses compared to the same time period last year. This includes a decrease in some of the significant crime categories such as Aggravated and Simple Assault, Arson, Burglary, Motor Vehicle Theft, Murder, Robbery, Theft from MV, and other Theft offenses.
 - Burglary incidents are **down 2%** from October to November and are also **down 29%** compared to the same period last year. Notably, year-over-year burglary rates have dropped significantly in Beats 1, 2, 3, and 5. Beat 4 however has experienced a **15% increase** in burglaries during the same time period.
 - **82%** - Residential Burglaries
 - **67%** of residential burglaries were garage burglaries
 - 69% occurred at apartments
 - 31% occurred at a private residence/home
 - **18%** - Commercial Burglaries
 - Motor Vehicle Theft was **down 2%** from October to November and is also **down 4%** year-to-date in 2025—a decrease by 20 cases compared to the same time period last year. A slight pattern emerged in November with 3 cases of Kia vehicles targeted with forced entry, similar to the “Kia Challenge” trend our area previously experienced. IAU will continue to track and monitor and provide additional info if pattern continues.
 - Though MVT declined in November, the winter trend of more residents leaving vehicles running with keys inside continued to rise and reflect this trend:
 - Approx. **48%** of vehicles were unlocked, **39%** had keys left inside the vehicle, and **23%** were running when stolen in November—which was a 15% increase from October
 - **59%** of vehicles were stolen from residential locations and **41%** were stolen from commercial/public locations
 - Approx. **61%** of the stolen vehicles in November have been recovered
 - Theft from Motor Vehicles was **down 11%** from October to November and is also **down 42%** year-to-date in 2025—which is a notable decrease by 258 cases compared to the same time period last year. There were 2 vehicle break-ins in November that fit the Kia pattern mentioned above, where forced entry and steering column/ignition damage was seen, likely being an unsuccessful attempt of MVT.
 - **30%** of vehicles were reportedly unlocked, however **68%** did *not* have signs of forced entry or any damage to gain entry
 - **34%** of vehicle break-ins occurred at apartments and **24%** occurred at a private residence/home in November
 - Shoplifting offenses were **down 16%** from October to November, however are still **up 31%** year-to-date in 2025—an increase of 288 offenses compared to the same time period last year. This is due to a notable 200% increase in Beat 1, mainly occurring at Family Fare, as well as a 119% increase in Beat 4, primarily at Fleet Farm and Family Fare.



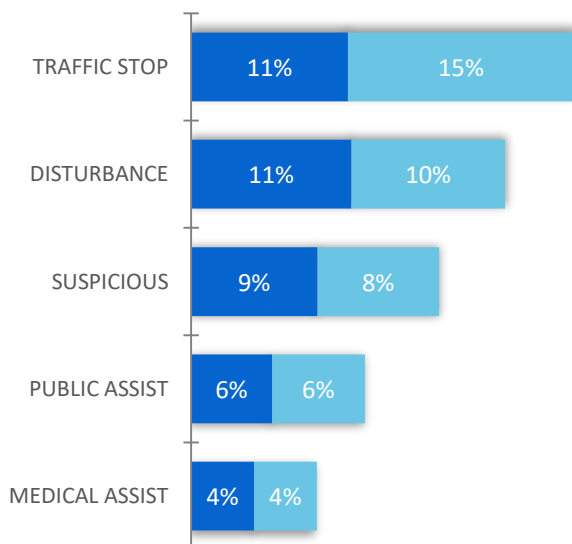
ALL FARGO POLICE BEATS

* YTD = Jan-Nov of each year



TOP 5 CFS TYPES

■ YTD 2024 ■ YTD 2025



Oct 2025	Nov 2025	Change		YTD 2024	YTD 2025	YTD Change
8,747	7,557	↓ 13%	Number of Calls for Service (CFS)	86,692	90,975	↑ 5%
Group A Case Offenses:						
11	4	↓ 64%	All Rape	131	82	↓ 37%
140	128	↓ 9%	All Other Larceny	1,476	1,321	↓ 11%
0	1	↑ 1	Animal Cruelty	30	20	↓ 33%
1	1	N/C	Arson	14	12	↓ 14%
29	27	↓ 7%	Assault, Aggravated	381	294	↓ 23%
175	133	↓ 24%	Assault, Simple	1,803	1,770	↓ 2%
0	0	N/C	Assisting or Promoting Prostitution	2	0	↓ 2
0	0	N/C	Betting/Wagering	0	0	N/C
0	0	N/C	Bribery	0	0	N/C
55	54	↓ 2%	Burglary/Breaking & Entering	975	690	↓ 29%
11	9	↓ 18%	Counterfeiting/Forgery	127	148	↑ 17%
3	3	N/C	Credit Card/Automatic Teller Machine Fraud	43	26	↓ 40%
67	64	↓ 4%	Destruction/Damage/Vandalism	1,020	787	↓ 23%
100	85	↓ 15%	Drug Equipment Violation	956	914	↓ 4%
85	67	↓ 21%	Drug/Narcotic Violations	730	739	↑ 1%
2	1	↓ 50%	Embezzlement	21	9	↓ 57%
2	2	N/C	Extortion/Blackmail	9	17	↑ 89%
10	7	↓ 30%	Forcible Fondling	90	86	↓ 4%
0	2	↑ 2	Fraud - Welfare Fraud	0	3	↑ 3
23	21	↓ 9%	Fraud-False Pretenses/Swindle	234	222	↓ 5%
0	0	N/C	Gambling Equip. Violations	0	0	N/C
0	0	N/C	Hacking/Computer Invasion (Fraud)	0	0	N/C
0	0	N/C	Human Trafficking, Commercial Sex Acts	0	1	↑ 1
0	0	N/C	Human Trafficking, Involuntary Servitude	1	2	↑ 100%
24	25	↑ 4%	Identity Theft (Fraud)	275	264	↓ 4%
0	1	↑ 1	Impersonation	15	14	↓ 7%
0	0	N/C	Incest	2	0	↓ 2
34	36	↑ 6%	Intimidation	494	404	↓ 18%
1	3	↑ 200%	Kidnapping/Abduction	35	20	↓ 43%
48	47	↓ 2%	Motor Vehicle Theft	454	434	↓ 4%
1	0	↓ 1	Murder/Non-Negligent Manslaughter	5	4	↓ 20%
0	0	N/C	Negligent Manslaughter	0	1	↑ 1
0	0	N/C	Operating/Promoting/ Assisting Gambling	0	0	N/C
0	0	N/C	Pocket Picking	6	3	↓ 50%
2	3	↑ 50%	Pornography/Obscene Material	64	50	↓ 22%
0	1	↑ 1	Prostitution	2	1	↓ 50%
0	0	N/C	Purchasing Prostitution	2	0	↓ 2
0	2	↑ 2	Purse Snatching	10	11	↑ 10%
7	5	↓ 29%	Robbery	100	74	↓ 26%
125	105	↓ 16%	Shoplifting	942	1,230	↑ 31%
0	0	N/C	Sports Tampering	0	0	N/C
6	4	↓ 33%	Stalking	60	60	N/C
0	0	N/C	Statutory Rape	11	11	N/C
20	13	↓ 35%	Stolen Property Offenses	212	156	↓ 26%
5	3	↓ 40%	Theft from Building	106	79	↓ 25%
0	0	N/C	Theft from Coin Operated Machine or Device	2	1	↓ 50%
65	58	↓ 11%	Theft from Motor Vehicle	861	503	↓ 42%
6	4	↓ 33%	Theft of Motor Vehicle Parts or Accessories	35	46	↑ 31%
7	6	↓ 14%	Weapon Law Violations	91	82	↓ 10%
3	1	↓ 67%	Wire Fraud	21	18	↓ 14%
1,068	926	↓ 13%	TOTAL	11,848	10,609	↓ 10%



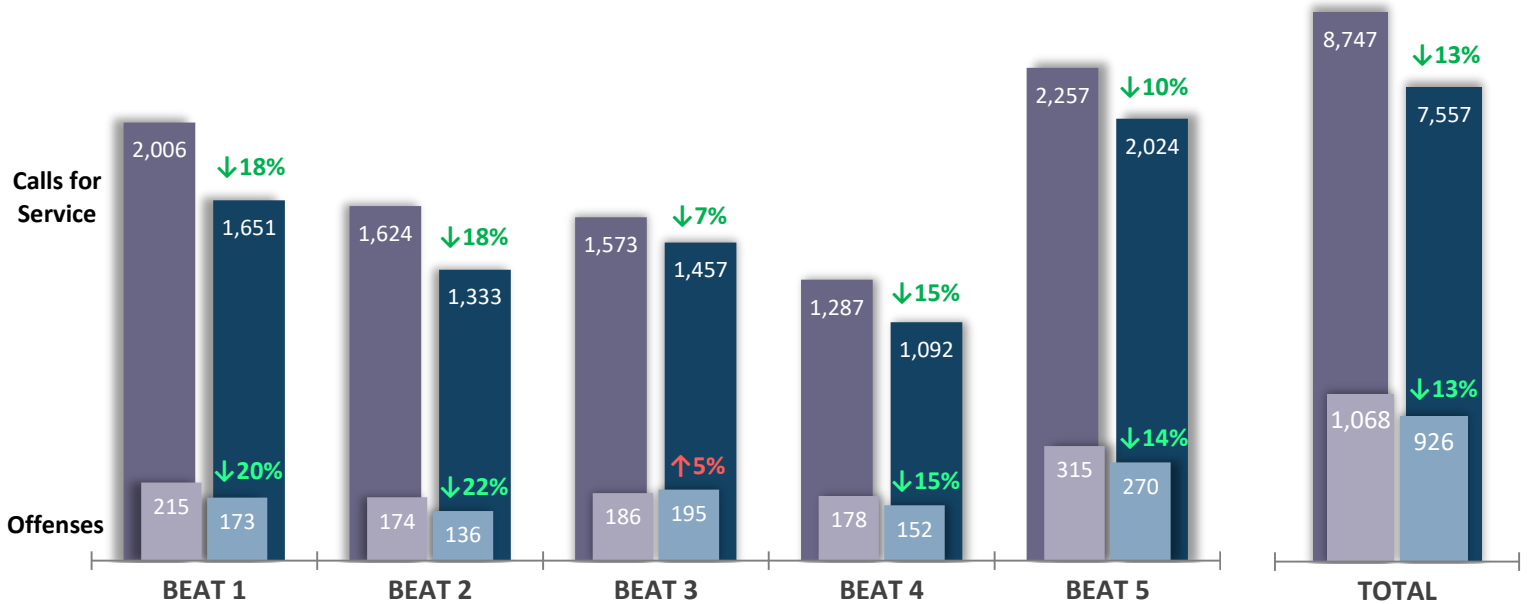
NUMBER OF CFS BY BEAT

NUMBER OF GROUP A OFFENSES BY BEAT

MONTH OVER MONTH COMPARISON

Percent change is compared to previous month

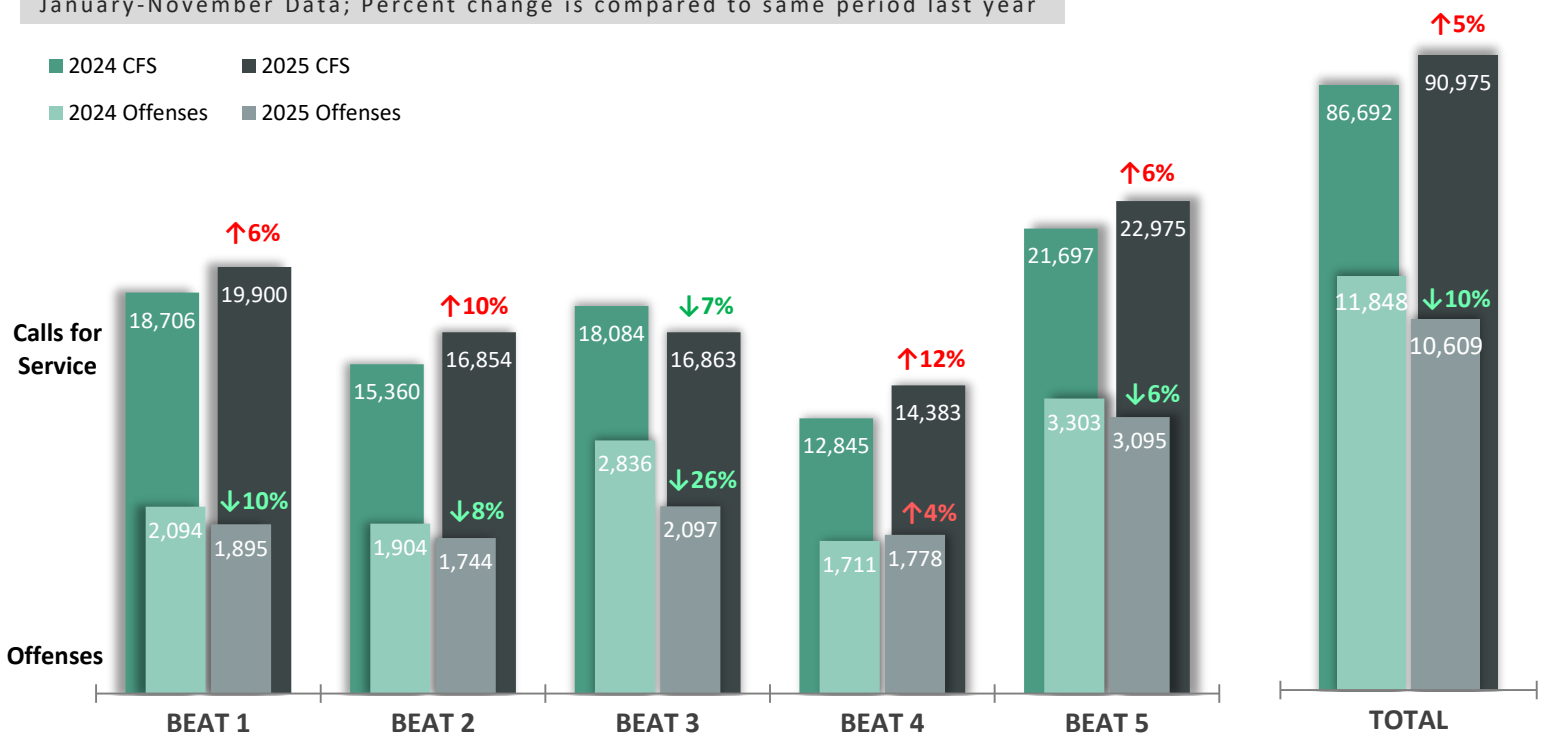
■ October CFS ■ November CFS
■ October Offenses ■ November Offenses



YEAR OVER YEAR COMPARISON

January-November Data; Percent change is compared to same period last year

■ 2024 CFS ■ 2025 CFS
■ 2024 Offenses ■ 2025 Offenses





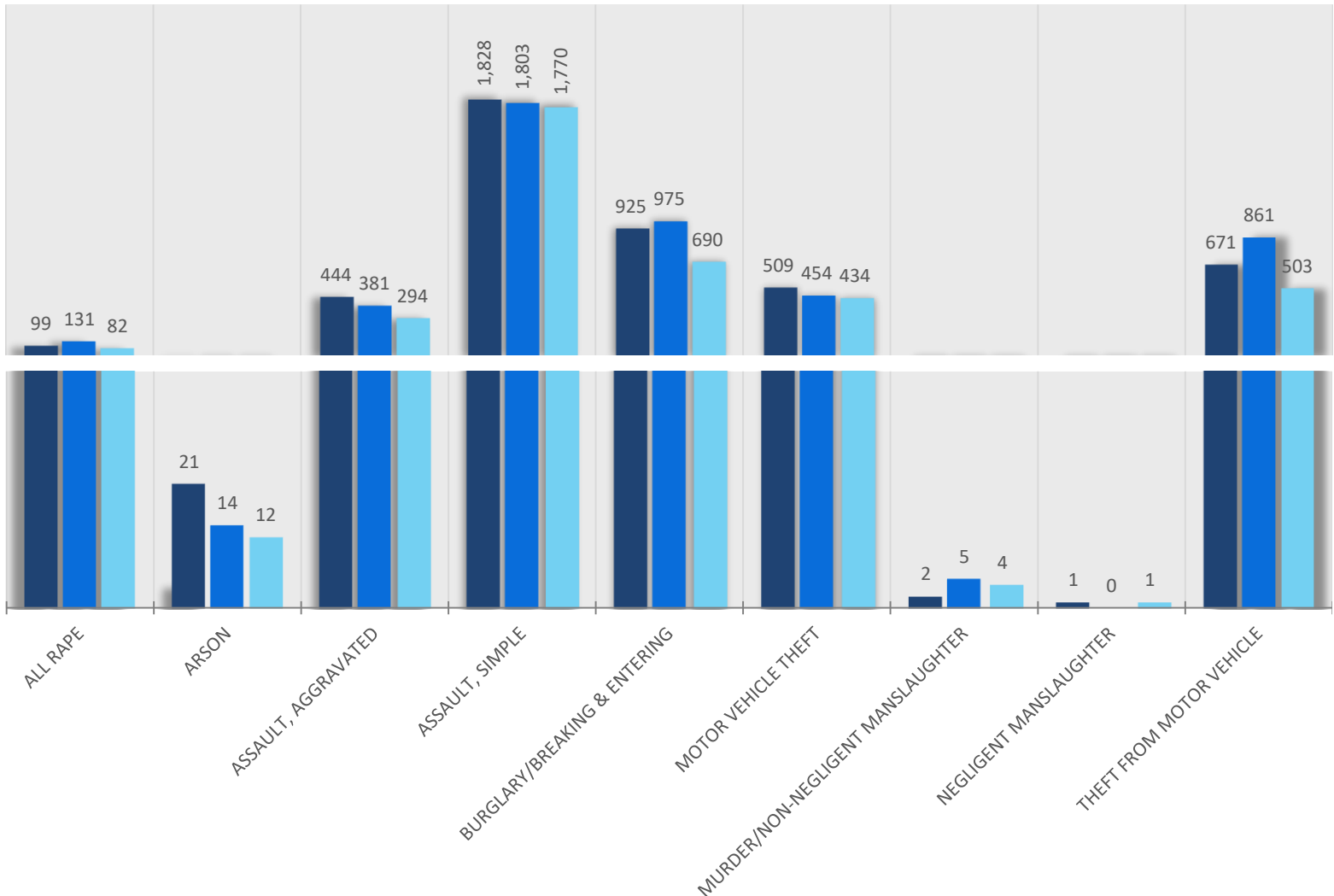
ALL FARGO POLICE BEATS

* YTD = Jan-Nov of each year

SELECT GROUP A OFFENSES

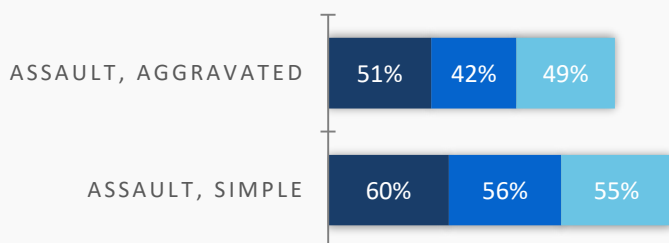
COUNT OF FARGO PD CASES PER OFFENSE CATEGORY

■ YTD 2023 ■ YTD 2024 ■ YTD 2025



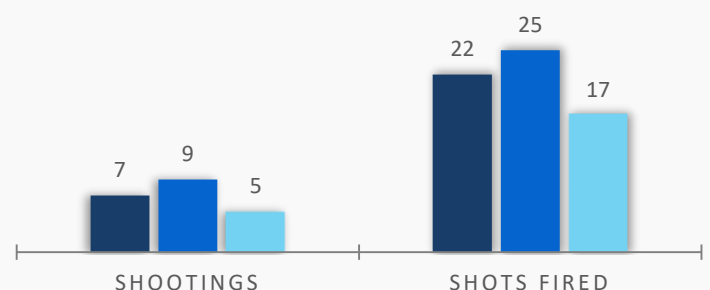
PERCENTAGE OF ASSAULTS THAT WERE DOMESTIC VIOLENCE RELATED

■ YTD 2023 ■ YTD 2024 ■ YTD 2025



SHOOTINGS & SHOTS FIRED

■ YTD 2023 ■ YTD 2024 ■ YTD 2025





FARGO POLICE BEAT COMPARISON

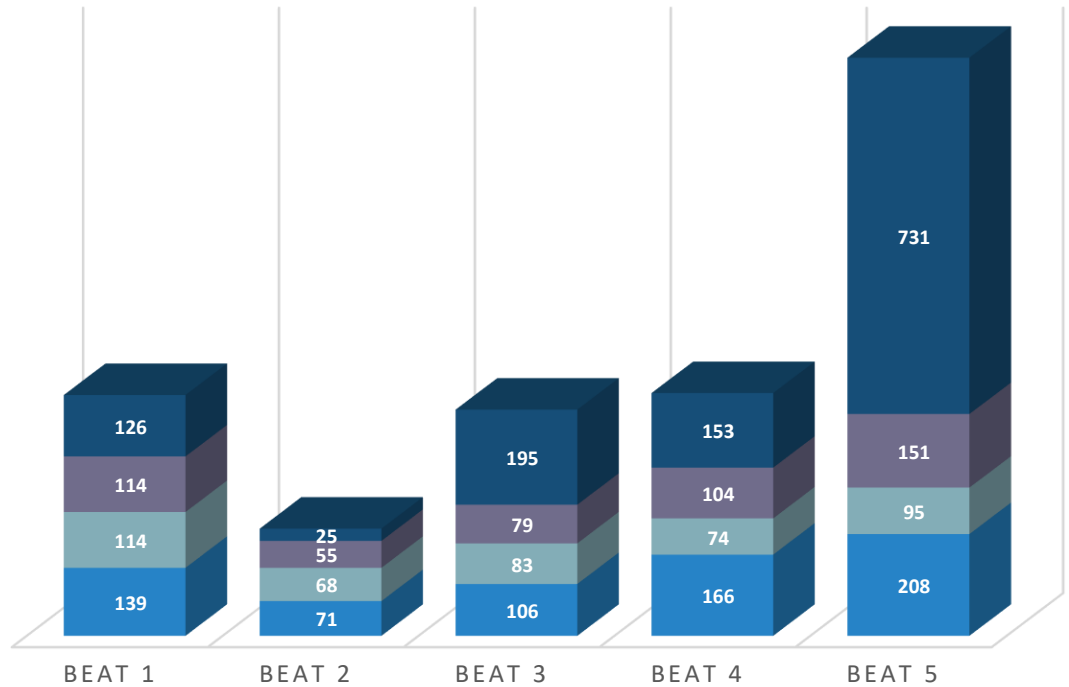
January 1, 2025 – November 30, 2025

Total Calls for Service

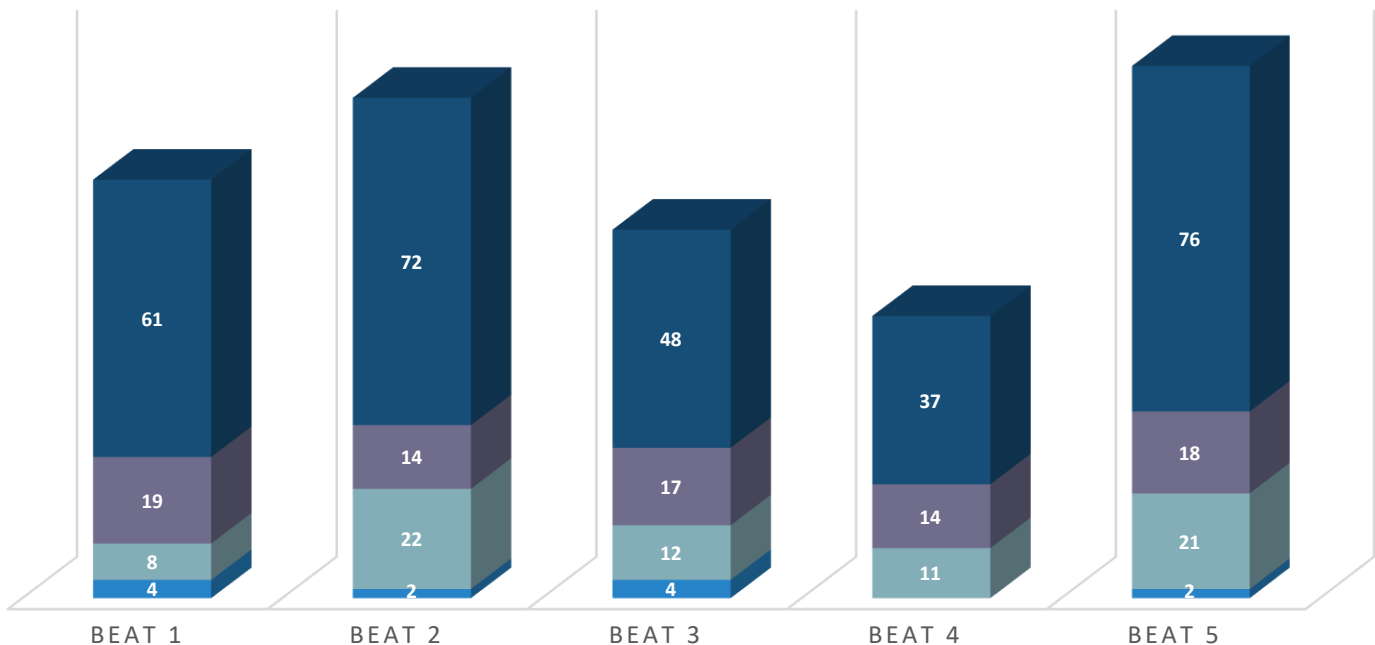


SELECT CRIMES BY BEAT

Burglary Motor Vehicle Theft Theft from Vehicle Shoplifting



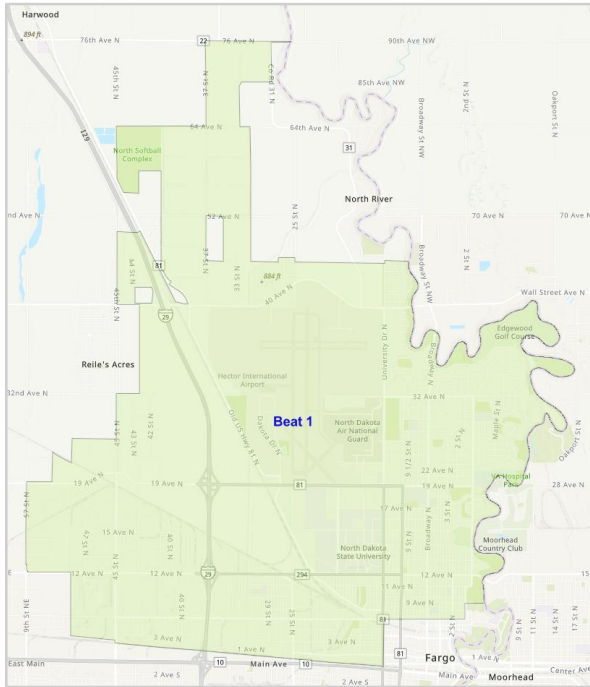
Arson Robbery Rape Aggravated Assault





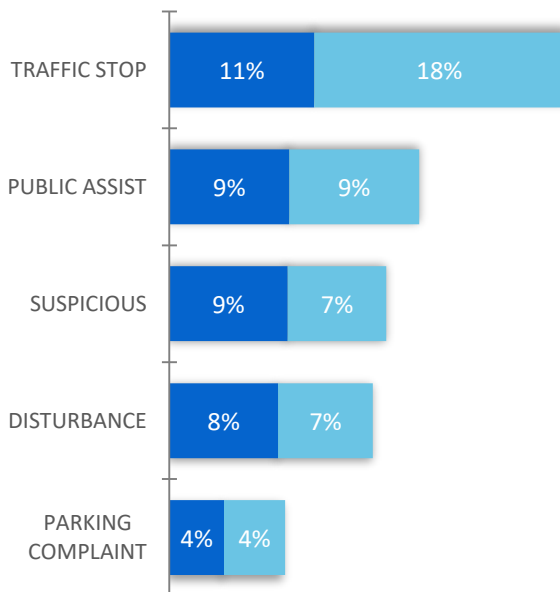
FARGO POLICE BEAT 1

* YTD = Jan-Nov of each year



TOP 5 CFS TYPES

■ YTD 2024 ■ YTD 2025



Oct 2025	Nov 2025	Change		YTD 2024	YTD 2025	YTD Change
2,006	1,651	↓ 18%	Number of Calls for Service (CFS)	18,706	19,900	↑ 6%
Group A Case Offenses:						
3	2	↓ 33%	All Rape	22	19	↓ 14%
27	27	N/C	All Other Larceny	327	263	↓ 20%
0	1	↑ 1	Animal Cruelty	10	9	↓ 10%
0	1	↑ 1	Arson	3	4	↑ 33%
8	5	↓ 38%	Assault, Aggravated	60	61	↑ 2%
36	25	↓ 31%	Assault, Simple	315	302	↓ 4%
0	0	N/C	Assisting or Promoting Prostitution	0	0	N/C
0	0	N/C	Betting/Wagering	0	0	N/C
0	0	N/C	Bribery	0	0	N/C
14	10	↓ 29%	Burglary/Breaking & Entering	227	139	↓ 39%
2	0	↓ 2	Counterfeiting/Forgery	23	25	↑ 9%
1	1	N/C	Credit Card/Automatic Teller Machine Fraud	11	8	↓ 27%
14	14	N/C	Destruction/Damage/Vandalism	199	144	↓ 28%
14	18	↑ 29%	Drug Equipment Violation	129	141	↑ 9%
15	11	↓ 27%	Drug/Narcotic Violations	101	123	↑ 22%
1	0	↓ 1	Embezzlement	1	1	N/C
1	1	N/C	Extortion/Blackmail	2	6	↑ 200%
3	1	↓ 67%	Forcible Fondling	14	11	↓ 21%
0	0	N/C	Fraud - Welfare Fraud	0	0	N/C
2	8	↑ 300%	Fraud-False Pretenses/Swindle	31	35	↑ 13%
0	0	N/C	Gambling Equip. Violations	0	0	N/C
0	0	N/C	Hacking/Computer Invasion (Fraud)	0	0	N/C
0	0	N/C	Human Trafficking, Commercial Sex Acts	0	0	N/C
0	0	N/C	Human Trafficking, Involuntary Servitude	0	0	N/C
5	5	N/C	Identity Theft (Fraud)	57	52	↓ 9%
0	1	↑ 1	Impersonation	2	4	↑ 100%
0	0	N/C	Incest	1	0	↓ 1
5	5	N/C	Intimidation	84	84	N/C
0	1	↑ 1	Kidnapping/Abduction	10	5	↓ 50%
15	10	↓ 33%	Motor Vehicle Theft	114	114	N/C
0	0	N/C	Murder/Non-Negligent Manslaughter	1	0	↓ 1
0	0	N/C	Negligent Manslaughter	0	1	↑ 1
0	0	N/C	Operating/Promoting/ Assisting Gambling	0	0	N/C
0	0	N/C	Pocket Picking	1	0	↓ 1
1	1	N/C	Pornography/Obscene Material	16	7	↓ 56%
0	0	N/C	Prostitution	0	0	N/C
0	0	N/C	Purchasing Prostitution	1	0	↓ 1
0	0	N/C	Purse Snatching	0	3	↑ 3
1	1	N/C	Robbery	8	8	N/C
13	8	↓ 38%	Shoplifting	42	126	↑ 200%
0	0	N/C	Sports Tampering	0	0	N/C
3	1	↓ 67%	Stalking	12	15	↑ 25%
0	0	N/C	Statutory Rape	1	1	N/C
3	1	↓ 67%	Stolen Property Offenses	45	21	↓ 53%
1	0	↓ 1	Theft from Building	25	14	↓ 44%
0	0	N/C	Theft from Coin Operated Machine or Device	0	0	N/C
23	13	↓ 43%	Theft from Motor Vehicle	177	114	↓ 36%
3	0	↓ 3	Theft of Motor Vehicle Parts or Accessories	6	13	↑ 117%
1	1	N/C	Weapon Law Violations	12	18	↑ 50%
0	0	N/C	Wire Fraud	4	4	N/C
215	173	↓ 20%	TOTAL	2,094	1,895	↓ 10%



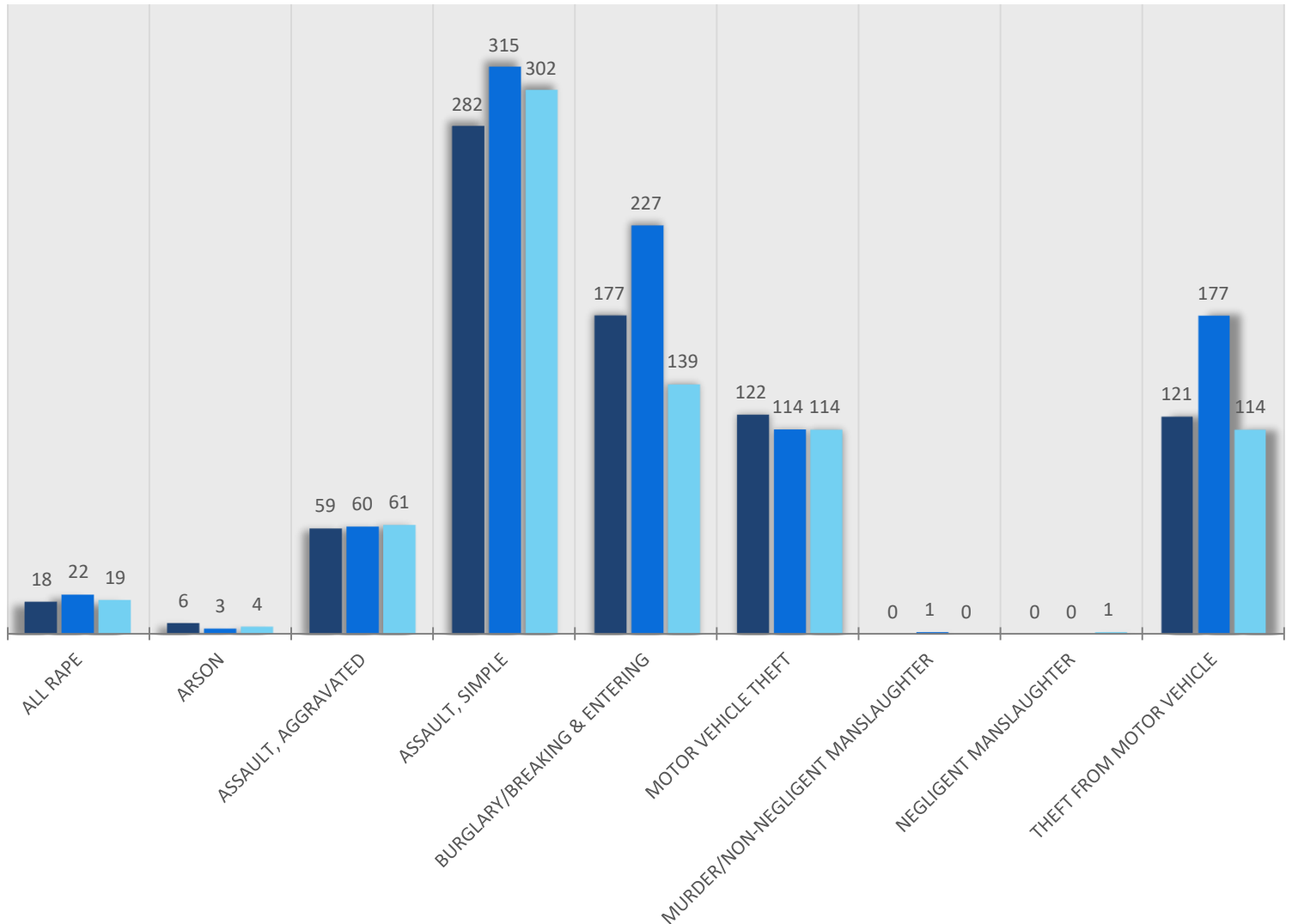
FARGO POLICE BEAT 1

* YTD = Jan-Nov of each year

SELECT GROUP A OFFENSES

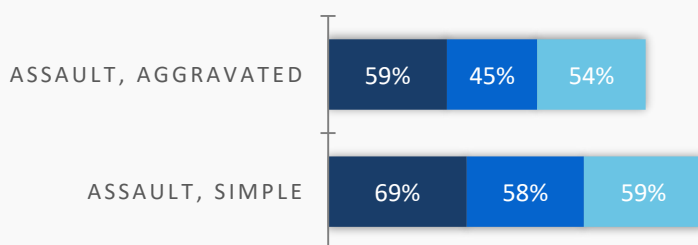
COUNT OF FARGO PD CASES PER OFFENSE CATEGORY

■ YTD 2023 ■ YTD 2024 ■ YTD 2025



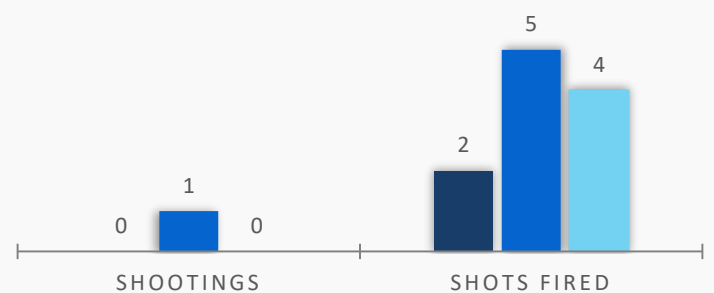
PERCENTAGE OF ASSAULTS THAT WERE DOMESTIC VIOLENCE RELATED

■ YTD 2023 ■ YTD 2024 ■ YTD 2025



SHOOTINGS & SHOTS FIRED

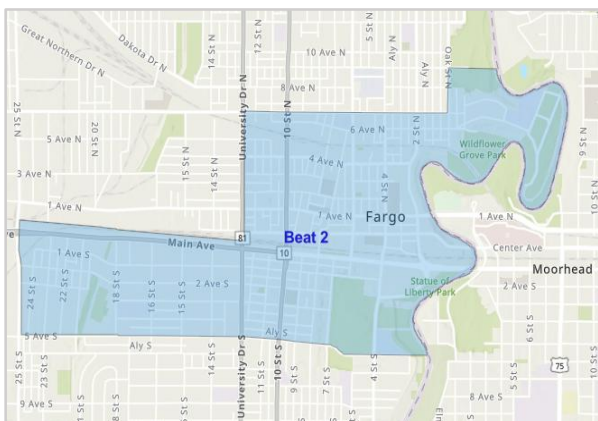
■ YTD 2023 ■ YTD 2024 ■ YTD 2025





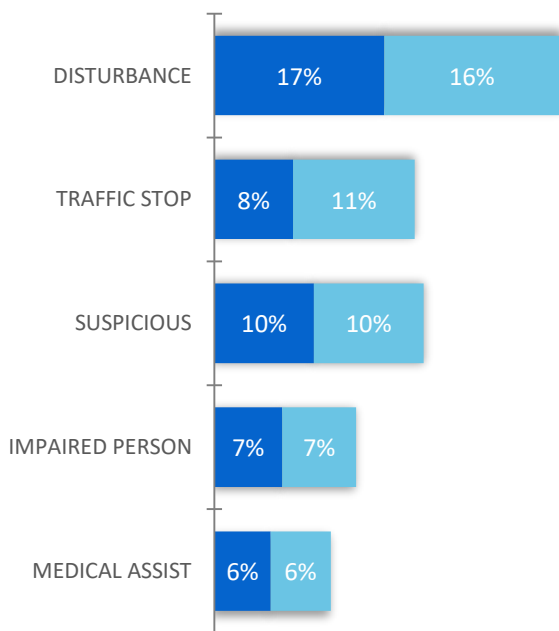
FARGO POLICE BEAT 2

* YTD = Jan-Nov of each year



TOP 5 CFS TYPES

■ YTD 2024 ■ YTD 2025



Oct 2025	Nov 2025	Change		YTD 2024	YTD 2025	YTD Change
1,624	1,333	↓ 18%	Number of Calls for Service (CFS)	15,360	16,854	↑ 10%
Group A Case Offenses:						
4	0	↓ 4	All Rape	21	14	↓ 33%
32	10	↓ 69%	All Other Larceny	227	228	↑ 0%
0	0	N/C	Animal Cruelty	3	1	↓ 67%
1	0	↓ 1	Arson	3	2	↓ 33%
6	9	↑ 50%	Assault, Aggravated	93	72	↓ 23%
30	19	↓ 37%	Assault, Simple	339	310	↓ 9%
0	0	N/C	Assisting or Promoting Prostitution	0	0	N/C
0	0	N/C	Betting/Wagering	0	0	N/C
0	0	N/C	Bribery	0	0	N/C
5	6	↑ 20%	Burglary/Breaking & Entering	108	71	↓ 34%
2	2	N/C	Counterfeiting/Forgery	12	18	↑ 50%
1	2	↑ 100%	Credit Card/Automatic Teller Machine Fraud	6	5	↓ 17%
15	10	↓ 33%	Destruction/Damage/Vandalism	215	160	↓ 26%
30	22	↓ 27%	Drug Equipment Violation	188	256	↑ 36%
16	18	↑ 13%	Drug/Narcotic Violations	151	186	↑ 23%
0	0	N/C	Embezzlement	2	0	↓ 2
0	0	N/C	Extortion/Blackmail	2	1	↓ 50%
2	2	N/C	Forcible Fondling	22	20	↓ 9%
0	0	N/C	Fraud - Welfare Fraud	0	0	N/C
2	1	↓ 50%	Fraud-False Pretenses/Swindle	40	26	↓ 35%
0	0	N/C	Gambling Equip. Violations	0	0	N/C
0	0	N/C	Hacking/Computer Invasion (Fraud)	0	0	N/C
0	0	N/C	Human Trafficking, Commercial Sex Acts	0	0	N/C
0	0	N/C	Human Trafficking, Involuntary Servitude	1	0	↓ 1
2	2	N/C	Identity Theft (Fraud)	33	27	↓ 18%
0	0	N/C	Impersonation	2	0	↓ 2
0	0	N/C	Incest	0	0	N/C
6	6	N/C	Intimidation	90	76	↓ 16%
0	2	↑ 2	Kidnapping/Abduction	5	3	↓ 40%
6	7	↑ 17%	Motor Vehicle Theft	58	68	↑ 17%
0	0	N/C	Murder/Non-Negligent Manslaughter	0	2	↑ 2
0	0	N/C	Negligent Manslaughter	0	0	N/C
0	0	N/C	Operating/Promoting/ Assisting Gambling	0	0	N/C
0	0	N/C	Pocket Picking	1	2	↑ 100%
0	1	↑ 1	Pornography/Obscene Material	5	2	↓ 60%
0	0	N/C	Prostitution	0	0	N/C
0	0	N/C	Purchasing Prostitution	0	0	N/C
0	0	N/C	Purse Snatching	4	1	↓ 75%
2	0	↓ 2	Robbery	31	22	↓ 29%
1	0	↓ 1	Shoplifting	49	25	↓ 49%
0	0	N/C	Sports Tampering	0	0	N/C
1	2	↑ 100%	Stalking	3	13	↑ 333%
0	0	N/C	Statutory Rape	1	1	N/C
2	3	↑ 50%	Stolen Property Offenses	38	25	↓ 34%
0	1	↑ 1	Theft from Building	22	20	↓ 9%
0	0	N/C	Theft from Coin Operated Machine or Device	2	1	↓ 50%
5	8	↑ 60%	Theft from Motor Vehicle	105	55	↓ 48%
2	1	↓ 50%	Theft of Motor Vehicle Parts or Accessories	5	7	↑ 40%
1	2	↑ 100%	Weapon Law Violations	12	23	↑ 92%
0	0	N/C	Wire Fraud	5	1	↓ 80%
174	136	↓ 22%	TOTAL	1,904	1,744	↓ 8%



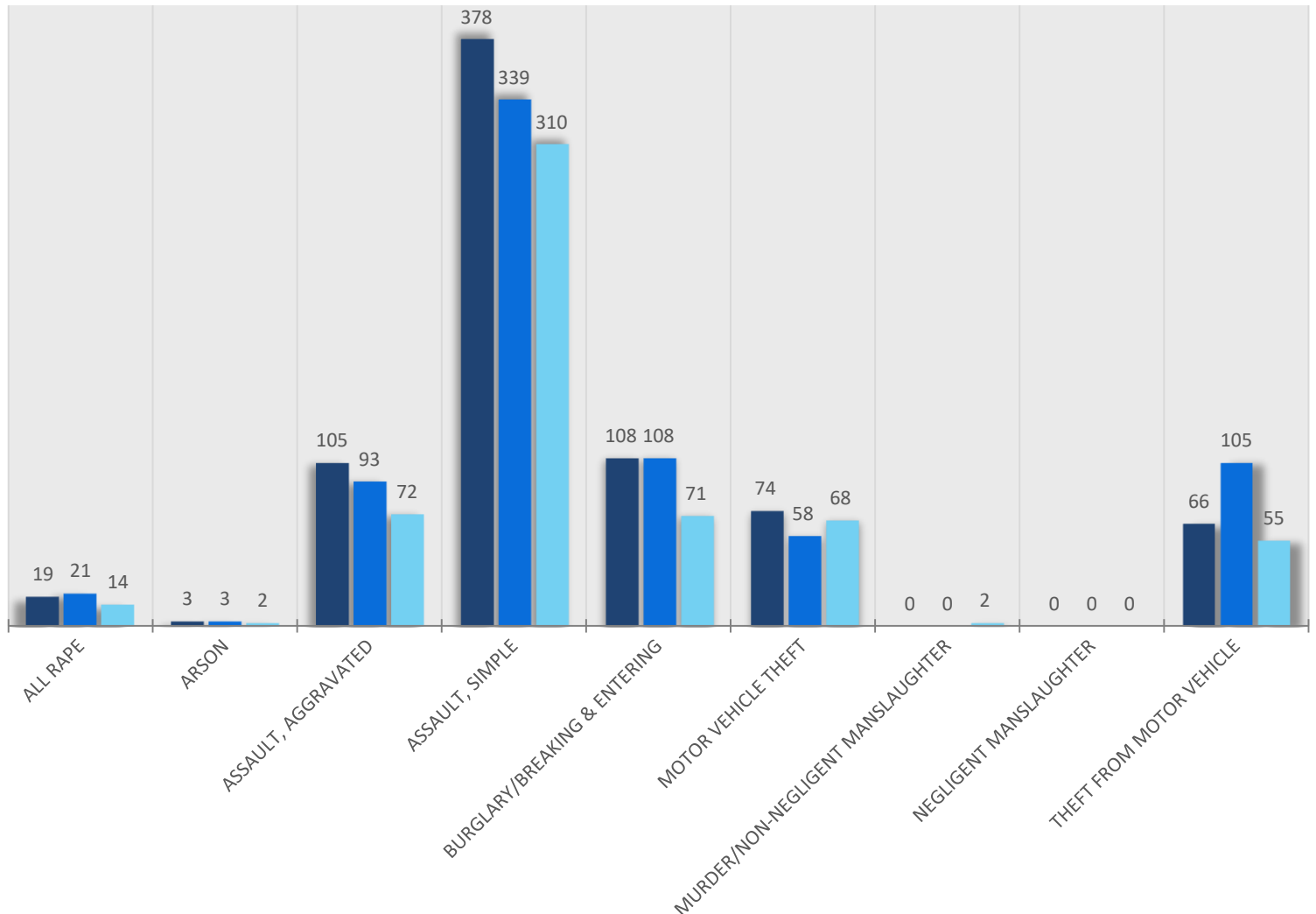
FARGO POLICE BEAT 2

* YTD = Jan-Nov of each year

SELECT GROUP A OFFENSES

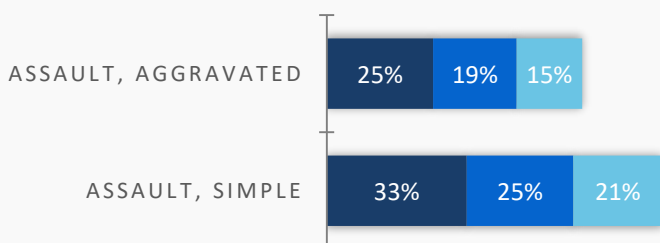
COUNT OF FARGO PD CASES PER OFFENSE CATEGORY

■ YTD 2023 ■ YTD 2024 ■ YTD 2025



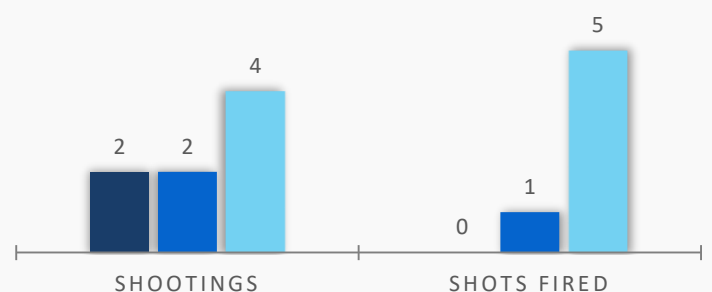
PERCENTAGE OF ASSAULTS THAT WERE DOMESTIC VIOLENCE RELATED

■ YTD 2023 ■ YTD 2024 ■ YTD 2025



SHOOTINGS & SHOTS FIRED

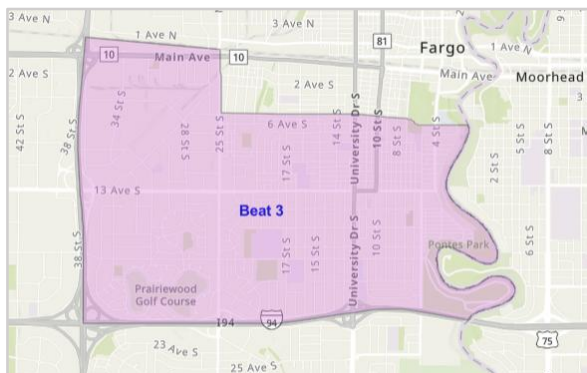
■ YTD 2023 ■ YTD 2024 ■ YTD 2025





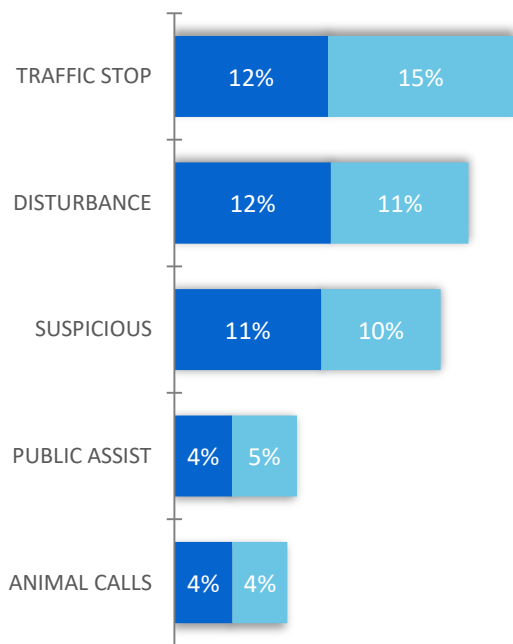
FARGO POLICE BEAT 3

* YTD = Jan-Nov of each year



TOP 5 CFS TYPES

■ YTD 2024 ■ YTD 2025



Oct 2025	Nov 2025	Change		YTD 2024	YTD 2025	YTD Change
1,573	1,457	↓ 7%	Number of Calls for Service (CFS)	18,084	16,863	↓ 7%
Group A Case Offenses:						
2	1	↓ 50%	All Rape	23	17	↓ 26%
15	28	↑ 87%	All Other Larceny	260	227	↓ 13%
0	0	N/C	Animal Cruelty	6	8	↑ 33%
0	0	N/C	Arson	3	4	↑ 33%
4	3	↓ 25%	Assault, Aggravated	77	48	↓ 38%
34	23	↓ 32%	Assault, Simple	368	345	↓ 6%
0	0	N/C	Assisting or Promoting Prostitution	2	0	↓ 2
0	0	N/C	Betting/Wagering	0	0	N/C
0	0	N/C	Bribery	0	0	N/C
9	9	N/C	Burglary/Breaking & Entering	198	106	↓ 46%
1	2	↑ 100%	Counterfeiting/Forgery	22	31	↑ 41%
1	0	↓ 1	Credit Card/Automatic Teller Machine Fraud	7	4	↓ 43%
9	20	↑ 122%	Destruction/Damage/Vandalism	201	139	↓ 31%
21	26	↑ 24%	Drug Equipment Violation	409	261	↓ 36%
22	21	↓ 5%	Drug/Narcotic Violations	276	218	↓ 21%
0	0	N/C	Embezzlement	4	2	↓ 50%
0	0	N/C	Extortion/Blackmail	1	1	N/C
2	0	↓ 2	Forcible Fondling	13	21	↑ 62%
0	2	↑ 2	Fraud - Welfare Fraud	0	3	↑ 3
4	4	N/C	Fraud-False Pretenses/Swindle	81	47	↓ 42%
0	0	N/C	Gambling Equip. Violations	0	0	N/C
0	0	N/C	Hacking/Computer Invasion (Fraud)	0	0	N/C
0	0	N/C	Human Trafficking, Commercial Sex Acts	0	1	↑ 1
0	0	N/C	Human Trafficking, Involuntary Servitude	0	1	↑ 1
7	4	↓ 43%	Identity Theft (Fraud)	53	53	N/C
0	0	N/C	Impersonation	2	3	↑ 50%
0	0	N/C	Incest	1	0	↓ 1
8	7	↓ 13%	Intimidation	96	88	↓ 8%
0	0	N/C	Kidnapping/Abduction	8	4	↓ 50%
9	13	↑ 44%	Motor Vehicle Theft	125	83	↓ 34%
0	0	N/C	Murder/Non-Negligent Manslaughter	2	0	↓ 2
0	0	N/C	Negligent Manslaughter	0	0	N/C
0	0	N/C	Operating/Promoting/ Assisting Gambling	0	0	N/C
0	0	N/C	Pocket Picking	1	0	↓ 1
0	0	N/C	Pornography/Obscene Material	9	12	↑ 33%
0	1	↑ 1	Prostitution	2	1	↓ 50%
0	0	N/C	Purchasing Prostitution	0	0	N/C
0	0	N/C	Purse Snatching	1	0	↓ 1
1	0	↓ 1	Robbery	23	12	↓ 48%
15	15	N/C	Shoplifting	190	195	↑ 3%
0	0	N/C	Sports Tampering	0	0	N/C
0	0	N/C	Stalking	15	8	↓ 47%
0	0	N/C	Statutory Rape	2	6	↑ 200%
5	2	↓ 60%	Stolen Property Offenses	56	32	↓ 43%
3	1	↓ 67%	Theft from Building	21	13	↓ 38%
0	0	N/C	Theft from Coin Operated Machine or Device	0	0	N/C
11	11	N/C	Theft from Motor Vehicle	236	79	↓ 67%
0	0	N/C	Theft of Motor Vehicle Parts or Accessories	6	2	↓ 67%
2	1	↓ 50%	Weapon Law Violations	32	16	↓ 50%
1	1	N/C	Wire Fraud	4	6	↑ 50%
186	195	↑ 5%	TOTAL	2,836	2,097	↓ 26%



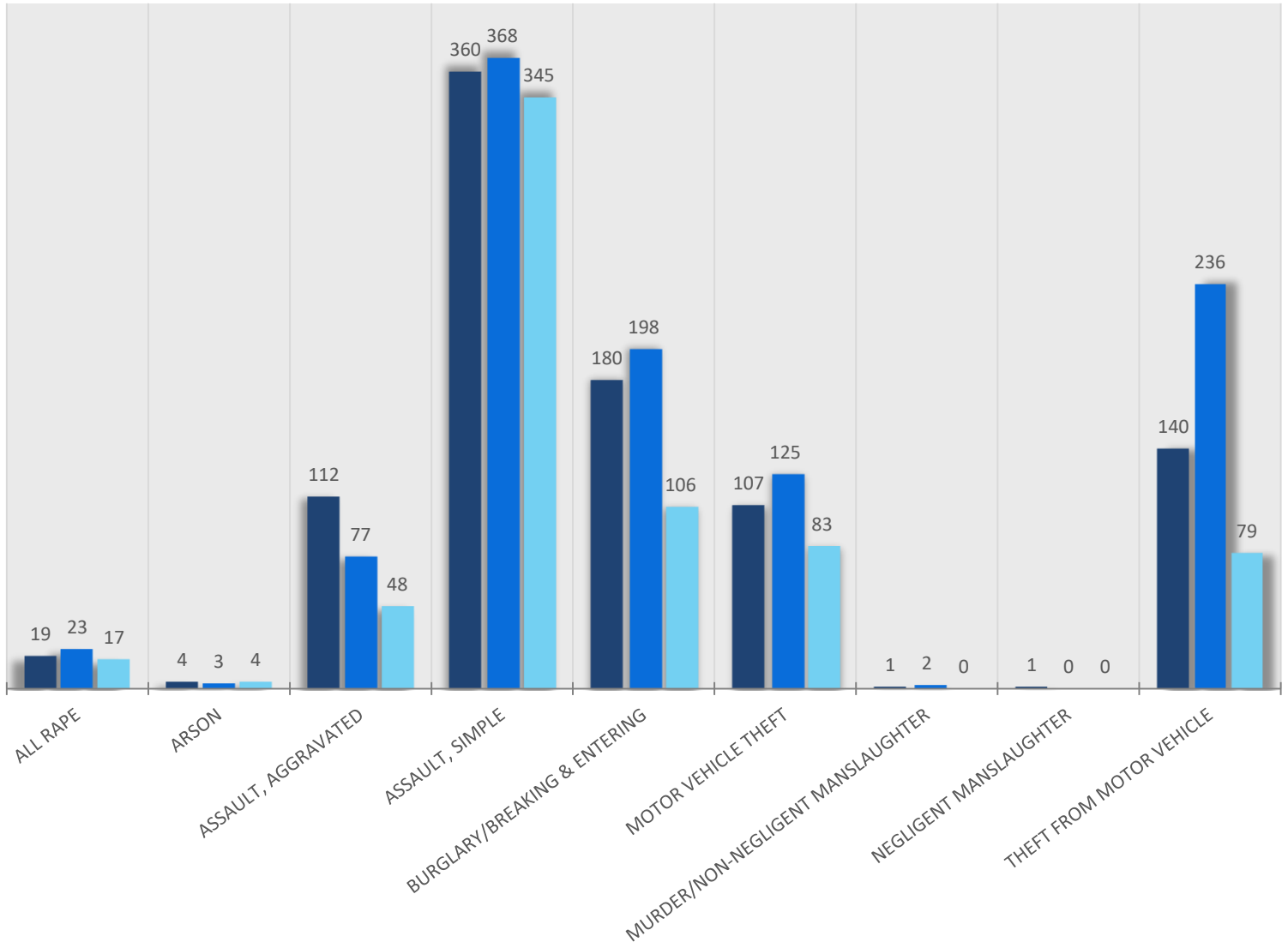
FARGO POLICE BEAT 3

* YTD = Jan-Nov of each year

SELECT GROUP A OFFENSES

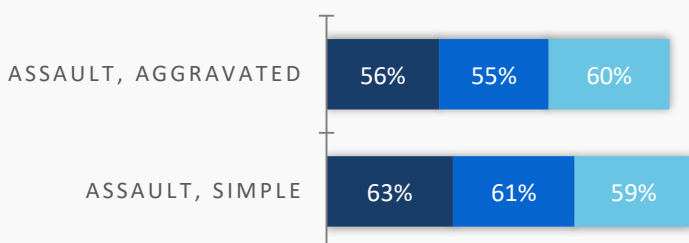
COUNT OF FARGO PD CASES PER OFFENSE CATEGORY

■ YTD 2023 ■ YTD 2024 ■ YTD 2025



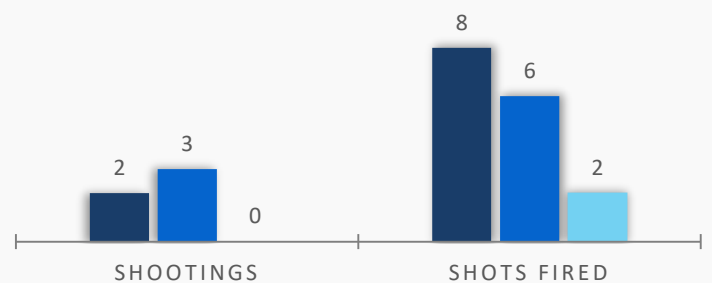
PERCENTAGE OF ASSAULTS THAT WERE DOMESTIC VIOLENCE RELATED

■ YTD 2023 ■ YTD 2024 ■ YTD 2025



SHOOTINGS & SHOTS FIRED

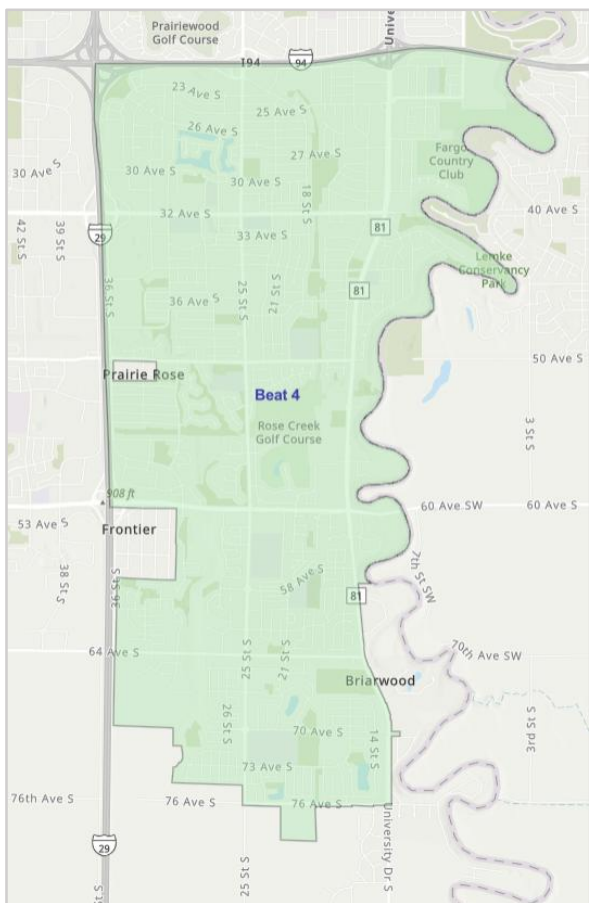
■ YTD 2023 ■ YTD 2024 ■ YTD 2025





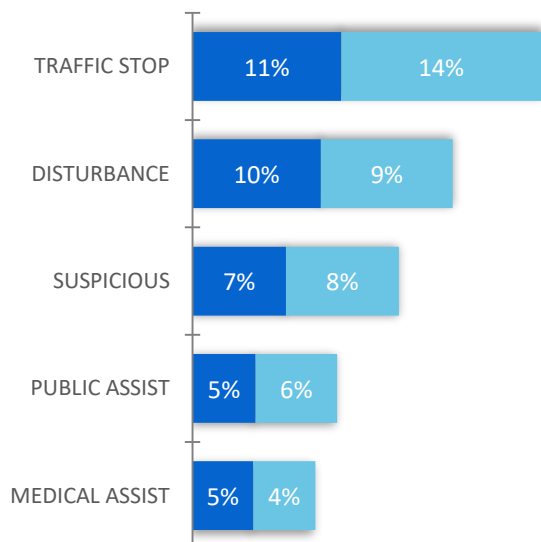
FARGO POLICE BEAT 4

* YTD = Jan-Nov of each year



TOP 5 CFS TYPES

■ YTD 2024 ■ YTD 2025



Oct 2025	Nov 2025	Change		YTD 2024	YTD 2025	YTD Change
1,287	1,092	↓15%	Number of Calls for Service (CFS)	12,845	14,383	↑12%
Group A Case Offenses:						
2	0	↓ 2	All Rape	29	14	↓ 52%
24	23	↓ 4%	All Other Larceny	232	216	↓ 7%
0	0	N/C	Animal Cruelty	7	1	↓ 86%
0	0	N/C	Arson	2	0	↓ 2
2	3	↑ 50%	Assault, Aggravated	69	37	↓ 46%
37	29	↓ 22%	Assault, Simple	338	348	↑ 3%
0	0	N/C	Assisting or Promoting Prostitution	0	0	N/C
0	0	N/C	Betting/Wagering	0	0	N/C
0	0	N/C	Bribery	0	0	N/C
15	11	↓ 27%	Burglary/Breaking & Entering	144	166	↑ 15%
2	2	N/C	Counterfeiting/Forgery	27	32	↑ 19%
0	0	N/C	Credit Card/Automatic Teller Machine Fraud	11	4	↓ 64%
11	11	N/C	Destruction/Damage/Vandalism	176	133	↓ 24%
13	10	↓ 23%	Drug Equipment Violation	77	120	↑ 56%
10	8	↓ 20%	Drug/Narcotic Violations	64	88	↑ 38%
1	0	↓ 1	Embezzlement	1	4	↑ 300%
0	1	↑ 1	Extortion/Blackmail	2	4	↑ 100%
1	2	↑ 100%	Forcible Fondling	18	17	↓ 6%
0	0	N/C	Fraud - Welfare Fraud	0	0	N/C
5	2	↓ 60%	Fraud-False Pretenses/Swindle	25	36	↑ 44%
0	0	N/C	Gambling Equip. Violations	0	0	N/C
0	0	N/C	Hacking/Computer Invasion (Fraud)	0	0	N/C
0	0	N/C	Human Trafficking, Commercial Sex Acts	0	0	N/C
0	0	N/C	Human Trafficking, Involuntary Servitude	0	1	↑ 1
7	4	↓ 43%	Identity Theft (Fraud)	40	50	↑ 25%
0	0	N/C	Impersonation	4	4	N/C
0	0	N/C	Incest	0	0	N/C
5	8	↑ 60%	Intimidation	83	63	↓ 24%
0	0	N/C	Kidnapping/Abduction	6	3	↓ 50%
10	6	↓ 40%	Motor Vehicle Theft	64	74	↑ 16%
0	0	N/C	Murder/Non-Negligent Manslaughter	1	0	↓ 1
0	0	N/C	Negligent Manslaughter	0	0	N/C
0	0	N/C	Operating/Promoting/ Assisting Gambling	0	0	N/C
0	0	N/C	Pocket Picking	1	1	N/C
1	1	N/C	Pornography/Obscene Material	16	15	↓ 6%
0	0	N/C	Prostitution	0	0	N/C
0	0	N/C	Purchasing Prostitution	0	0	N/C
0	1	↑ 1	Purse Snatching	0	3	↑ 3
1	2	↑ 100%	Robbery	13	11	↓ 15%
12	13	↑ 8%	Shoplifting	70	153	↑ 119%
0	0	N/C	Sports Tampering	0	0	N/C
1	1	N/C	Stalking	10	7	↓ 30%
0	0	N/C	Statutory Rape	3	1	↓ 67%
5	3	↓ 40%	Stolen Property Offenses	33	31	↓ 6%
1	0	↓ 1	Theft from Building	10	11	↑ 10%
0	0	N/C	Theft from Coin Operated Machine or Device	0	0	N/C
9	9	N/C	Theft from Motor Vehicle	112	104	↓ 7%
1	2	↑ 100%	Theft of Motor Vehicle Parts or Accessories	3	13	↑ 333%
2	0	↓ 2	Weapon Law Violations	18	12	↓ 33%
0	0	N/C	Wire Fraud	2	1	↓ 50%
178	152	↓ 15%	TOTAL	1,711	1,778	↑ 4%



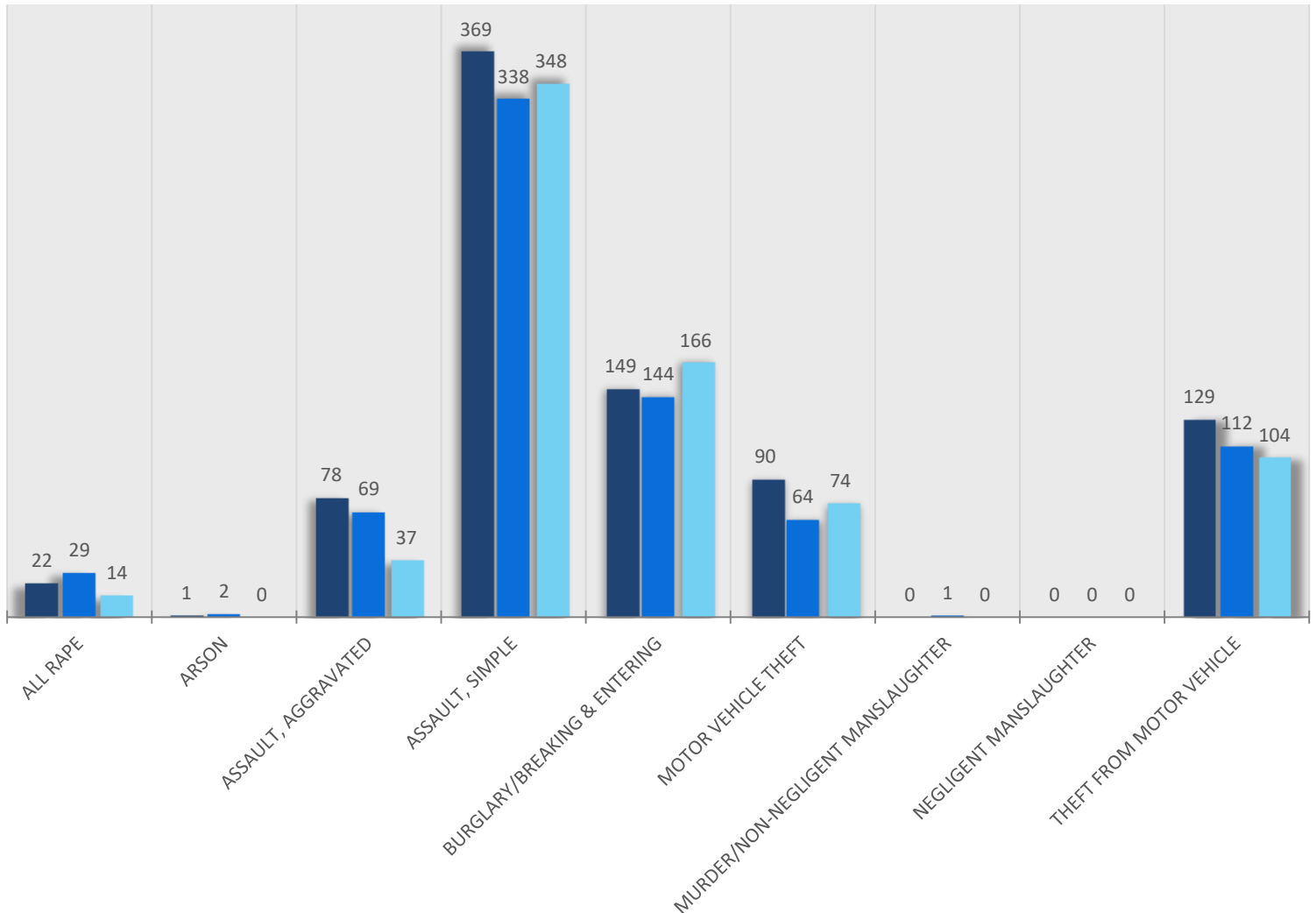
FARGO POLICE BEAT 4

* YTD = Jan-Nov of each year

SELECT GROUP A OFFENSES

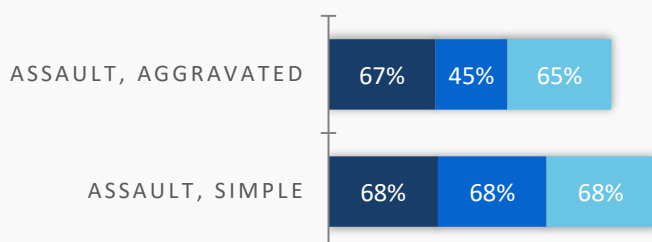
COUNT OF FARGO PD CASES PER OFFENSE CATEGORY

■ YTD 2023 ■ YTD 2024 ■ YTD 2025



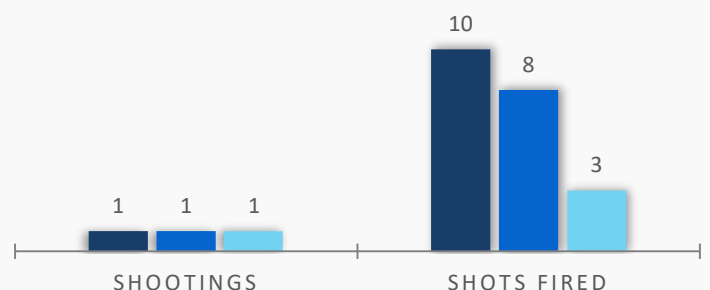
PERCENTAGE OF ASSAULTS THAT WERE DOMESTIC VIOLENCE RELATED

■ YTD 2023 ■ YTD 2024 ■ YTD 2025



SHOOTINGS & SHOTS FIRED

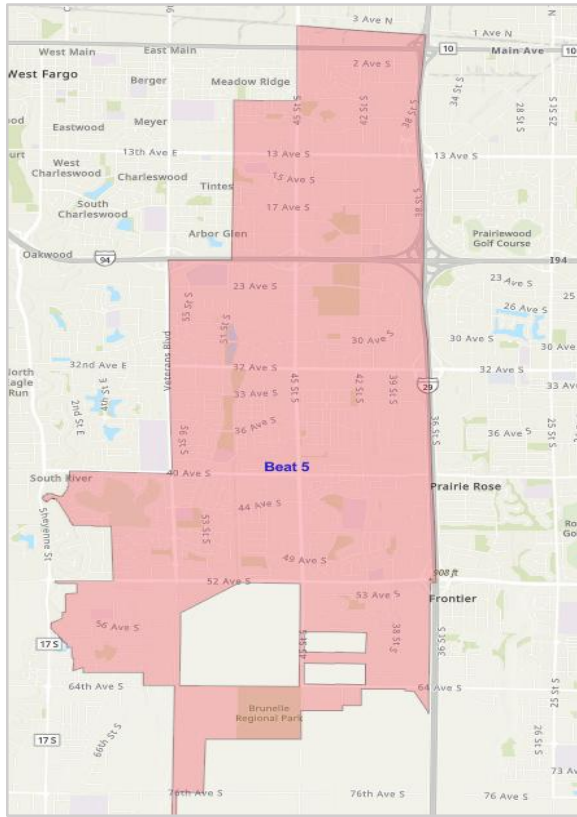
■ YTD 2023 ■ YTD 2024 ■ YTD 2025





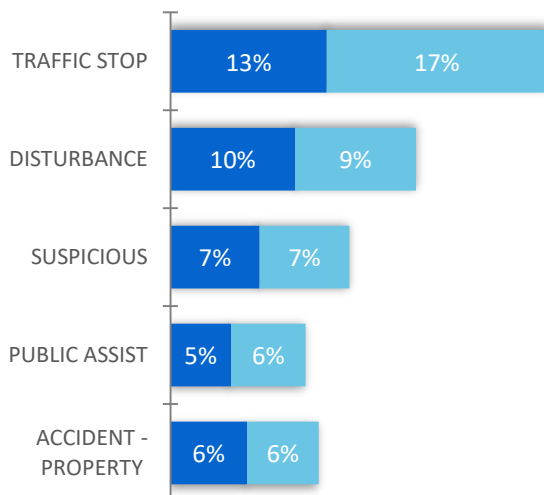
FARGO POLICE BEAT 5

* YTD = Jan-Nov of each year



TOP 5 CFS TYPES

■ YTD 2024 ■ YTD 2025



Oct 2025	Nov 2025	Change		YTD 2024	YTD 2025	YTD Change
2,257	2,024	↓ 10%	Number of Calls for Service (CFS)	21,697	22,975	↑ 6%
Group A Case Offenses:						
0	1	↑ 1	All Rape	36	18	↓ 50%
42	40	↓ 5%	All Other Larceny	430	387	↓ 10%
0	0	N/C	Animal Cruelty	4	1	↓ 75%
0	0	N/C	Arson	3	2	↓ 33%
9	7	↓ 22%	Assault, Aggravated	82	76	↓ 7%
38	37	↓ 3%	Assault, Simple	443	465	↑ 5%
0	0	N/C	Assisting or Promoting Prostitution	0	0	N/C
0	0	N/C	Betting/Wagering	0	0	N/C
0	0	N/C	Bribery	0	0	N/C
12	18	↑ 50%	Burglary/Breaking & Entering	298	208	↓ 30%
4	3	↓ 25%	Counterfeiting/Forgery	43	42	↓ 2%
0	0	N/C	Credit Card/Automatic Teller Machine Fraud	8	5	↓ 38%
18	9	↓ 50%	Destruction/Damage/Vandalism	229	211	↓ 8%
22	9	↓ 59%	Drug Equipment Violation	153	136	↓ 11%
22	9	↓ 59%	Drug/Narcotic Violations	138	124	↓ 10%
0	1	↑ 1	Embezzlement	13	2	↓ 85%
1	0	↓ 1	Extortion/Blackmail	2	5	↑ 150%
2	2	N/C	Forcible Fondling	23	17	↓ 26%
0	0	N/C	Fraud - Welfare Fraud	0	0	N/C
10	6	↓ 40%	Fraud-False Pretenses/Swindle	57	78	↑ 37%
0	0	N/C	Gambling Equip. Violations	0	0	N/C
0	0	N/C	Hacking/Computer Invasion (Fraud)	0	0	N/C
0	0	N/C	Human Trafficking, Commercial Sex Acts	0	0	N/C
0	0	N/C	Human Trafficking, Involuntary Servitude	0	0	N/C
3	10	↑ 233%	Identity Theft (Fraud)	92	82	↓ 11%
0	0	N/C	Impersonation	5	3	↓ 40%
0	0	N/C	Incest	0	0	N/C
10	10	N/C	Intimidation	141	93	↓ 34%
1	0	↓ 1	Kidnapping/Abduction	6	5	↓ 17%
8	11	↑ 38%	Motor Vehicle Theft	93	95	↑ 2%
1	0	↓ 1	Murder/Non-Negligent Manslaughter	1	2	↑ 100%
0	0	N/C	Negligent Manslaughter	0	0	N/C
0	0	N/C	Operating/Promoting/ Assisting Gambling	0	0	N/C
0	0	N/C	Pocket Picking	2	0	↓ 2
0	0	N/C	Pornography/Obscene Material	18	14	↓ 22%
0	0	N/C	Prostitution	0	0	N/C
0	0	N/C	Purchasing Prostitution	1	0	↓ 1
0	1	↑ 1	Purse Snatching	5	4	↓ 20%
2	2	N/C	Robbery	25	21	↓ 16%
84	69	↓ 18%	Shoplifting	591	731	↑ 24%
0	0	N/C	Sports Tampering	0	0	N/C
1	0	↓ 1	Stalking	20	17	↓ 15%
0	0	N/C	Statutory Rape	4	2	↓ 50%
5	4	↓ 20%	Stolen Property Offenses	40	47	↑ 18%
0	1	↑ 1	Theft from Building	28	21	↓ 25%
0	0	N/C	Theft from Coin Operated Machine or Device	0	0	N/C
17	17	N/C	Theft from Motor Vehicle	231	151	↓ 35%
0	1	↑ 1	Theft of Motor Vehicle Parts or Accessories	15	11	↓ 27%
1	2	↑ 100%	Weapon Law Violations	17	13	↓ 24%
2	0	↓ 2	Wire Fraud	6	6	N/C
315	270	↓ 14%	TOTAL	3,303	3,095	↓ 6%



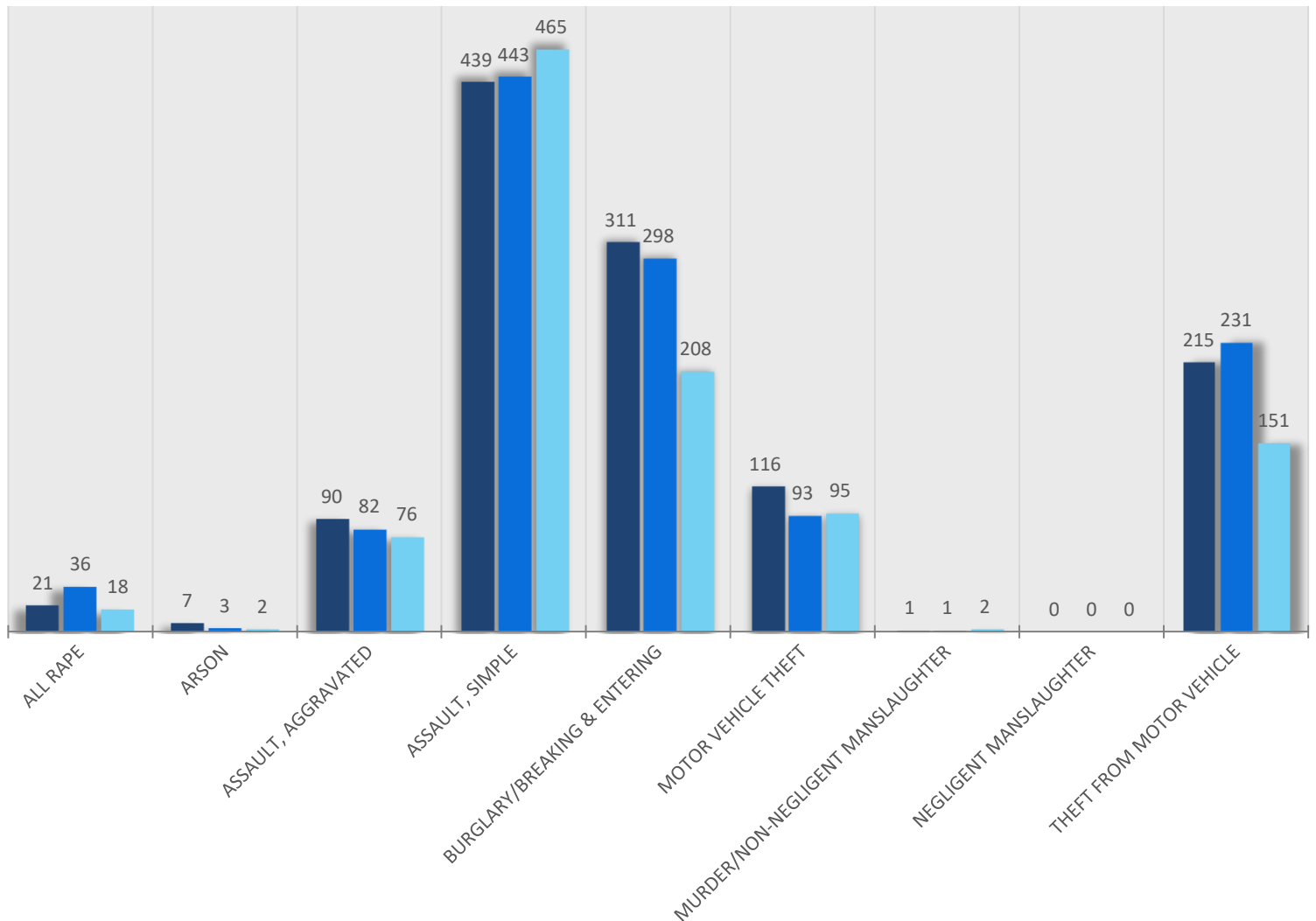
FARGO POLICE BEAT 5

* YTD = Jan-Nov of each year

SELECT GROUP A OFFENSES

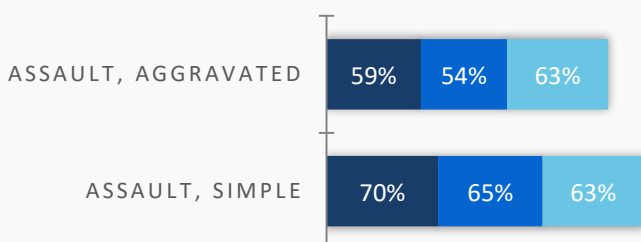
COUNT OF FARGO PD CASES PER OFFENSE CATEGORY

■ YTD 2023 ■ YTD 2024 ■ YTD 2025



PERCENTAGE OF ASSAULTS THAT WERE DOMESTIC VIOLENCE RELATED

■ YTD 2023 ■ YTD 2024 ■ YTD 2025



SHOOTINGS & SHOTS FIRED

■ YTD 2023 ■ YTD 2024 ■ YTD 2025

