

# Health Officer Update

Tracie Newman, MD, MPH, FAAP

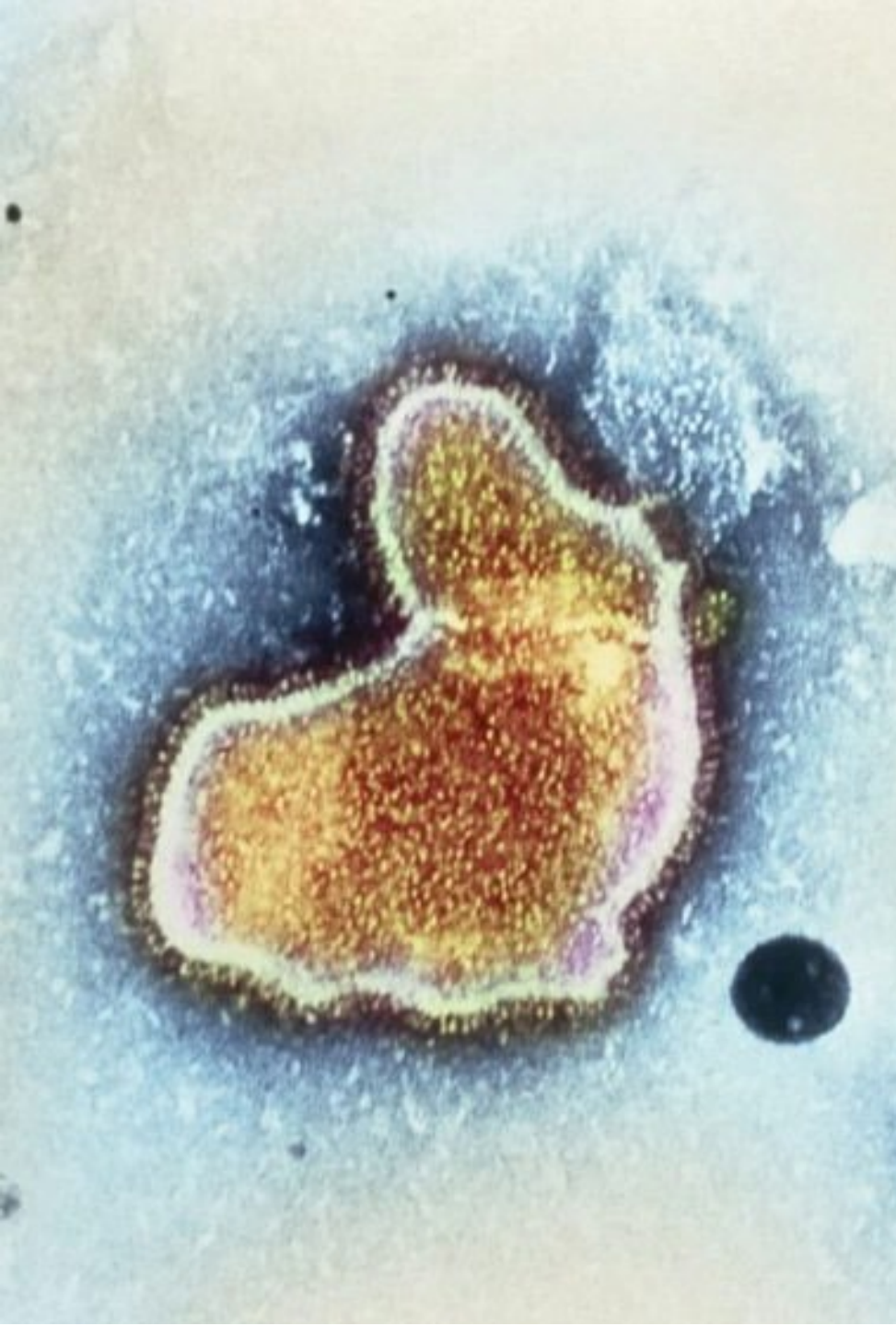
1/17/23



**Fargo Cass**



**Public Health**  
Prevent. Promote. Protect.

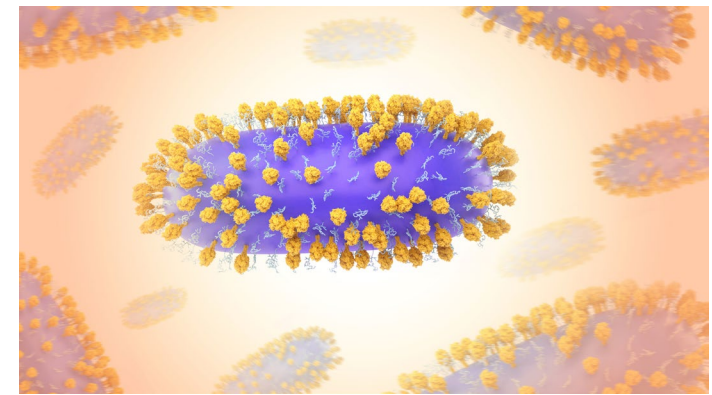


# Nirsevimab U.S. Regulatory Submission Accepted

---

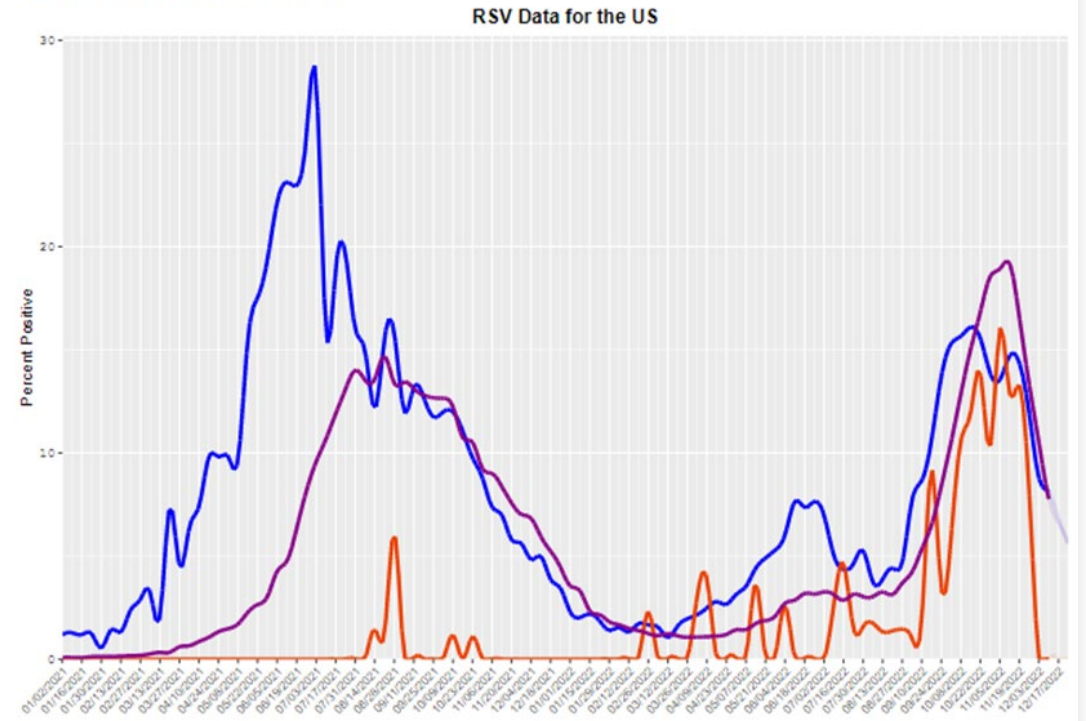
- Long-acting anti-RSV monoclonal antibody intended to prevent RSV in newborns / infants during 1st RSV season & through 2<sup>nd</sup> season for high risk, up to age 2
- Randomized, double-blinded, phase 2/3 trial data showed statistically significant reduction in medically-attended RSV infections and reduced hospitalizations compared with placebo
- Comparable safety and tolerability profile to Synagis
- If FDA approved, would be 1<sup>st</sup> single-dose RSV preventative in U.S. for newborns and infants

# Respiratory Syncytial Virus



- Droplet spread with coughing, sneezing or direct contact with contaminated surfaces
- Clinically causes cold-like illness, wheezing, bronchiolitis, pneumonia (depending on age, underlying health)
- RSV infections typically occur during fall and winter
- In U.S each year:
  - Kids < 5: ~58,000 hospitalizations and 100-500 deaths
  - Adults ≥ 65: ~177,000 hospitalizations and 14,000 deaths
- The nation and N.D. saw unseasonal early surge this year
- N.D. trends – similar trajectory

## Percent Positive





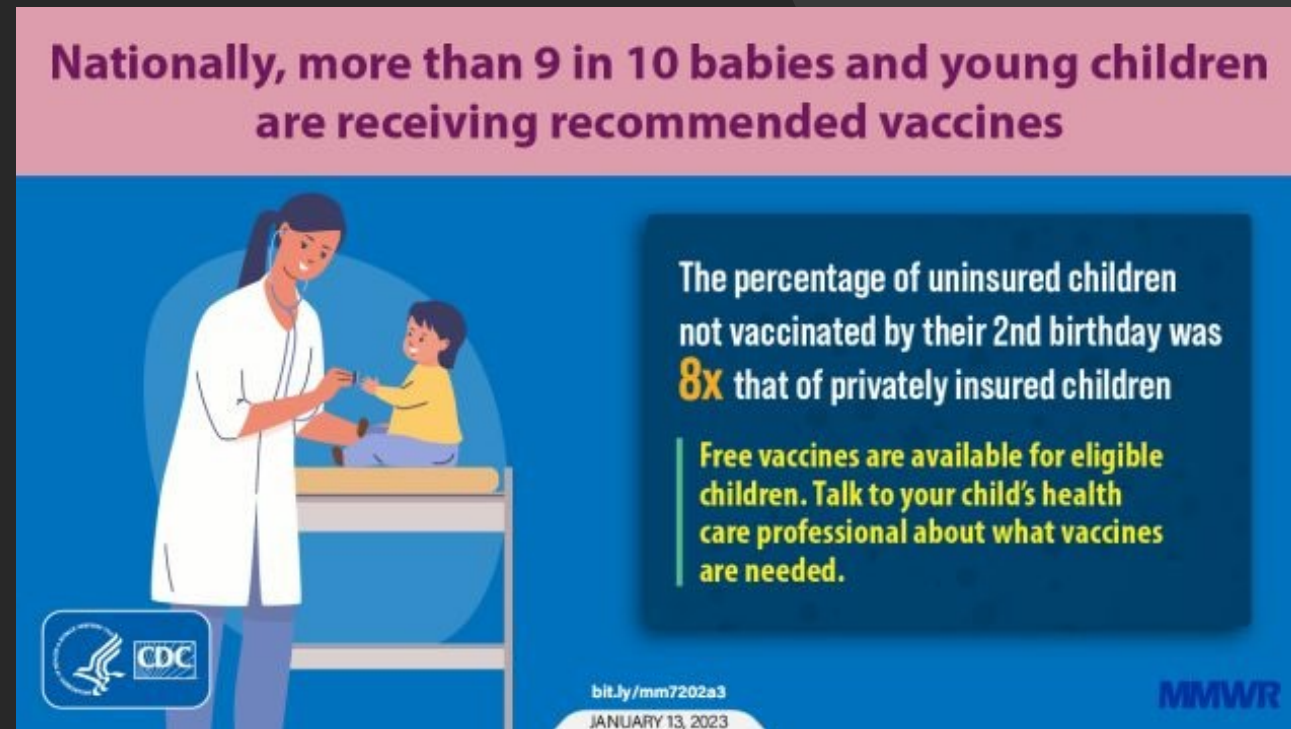


# January = Cervical Cancer Awareness Month

- Cervical cancer was previously the leading cause of female cancer death in U.S.
- Screening and HPV vaccination have made cervical cancer the most preventable cancer for women
- HPV is leading cause of 6 cancers and is very common – almost all adults will have some type of HPV
- HPV vaccine prevents > 90% of cancers
- HPV vaccine is a 2-dose series recommended starting at age 9 years

# CDC MMWR National Vaccination Coverage

- National Immunization Survey–Child, 2019–2021, provides U.S. vaccination coverage data for children up to age 2
- Nationwide, coverage remained high for most vaccines
- No decline in routine vaccinations associated with COVID-19 pandemic found
- Disparities persist – declines seen in children living in rural areas and below federal poverty level



## CDC MMWR Kindergarten Vaccinations

- Selected vaccines and exemption rates in U.S. kindergarteners, 2021–22 School Year
- 2020-21 school year: state-required vaccines in U.S. kindergarteners declined 95% to 94%
- 2021-22 school year: state-required vaccines decreased to 93%





# CDC MMWR Kindergarten Vaccinations

---

“Despite widespread return to in-person learning, COVID-19–related disruptions continued to affect vaccination coverage and assessment for the 2021–22 school year, preventing a return to prepandemic coverage.”

Nationwide, exemption rates remained low at 2.6%.

Another 3.9% without exemption were not up to date with MMR vaccine

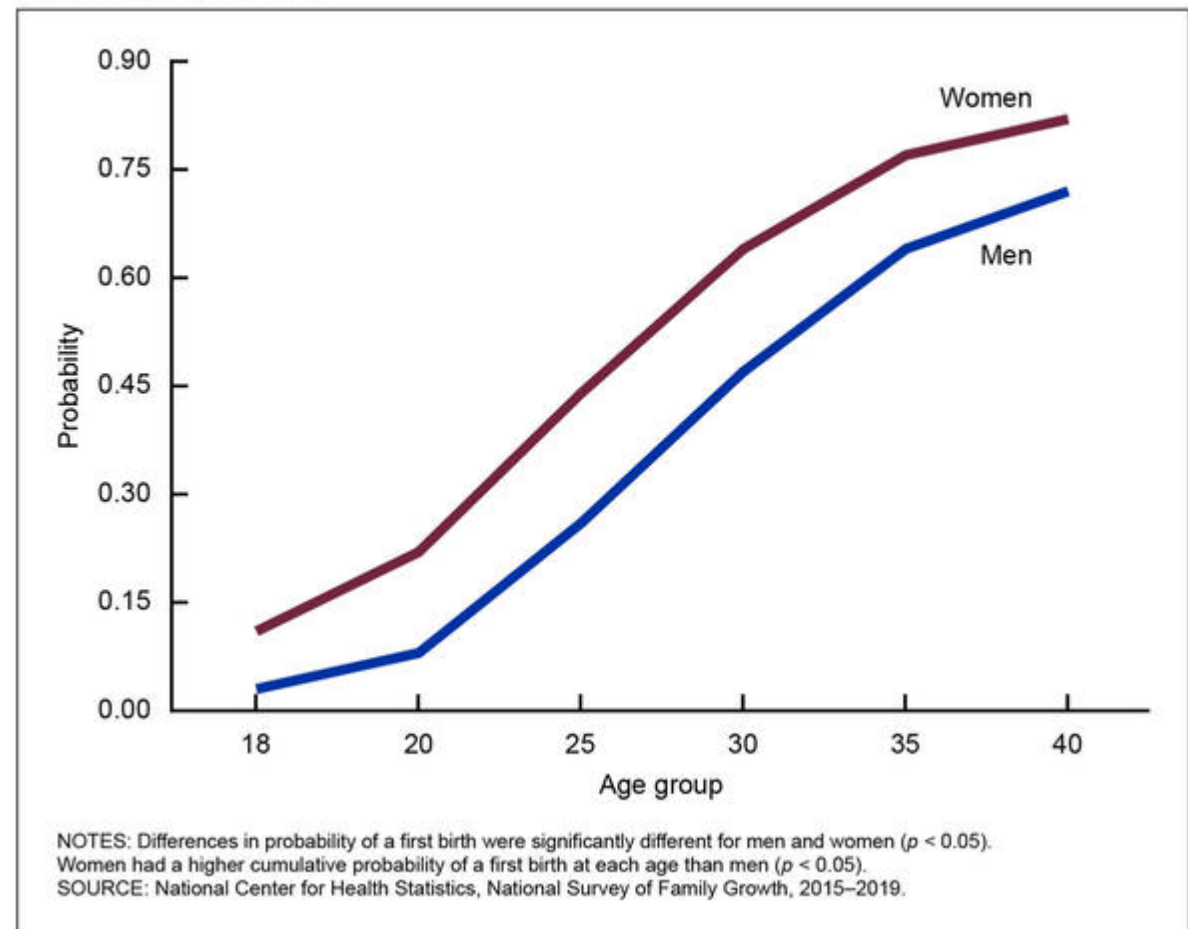
\* N.D.’s non-medical (moral, philosophical, religious) school entry exemption is now > 5%

# National Health Statistics Reports

Number 179 ■ January 10, 2023

- National Survey of Family Growth assesses fertility of U.S. men & women ages 15–49 (data from 2015–2019)
- Findings:
  - U.S. women waiting longer to have children
  - U.S. women having fewer children, average of 1.3 babies
  - Fertility rates declining
  - Growing # of women having children at 35+
  - Teen pregnancy declining

Probability of a first birth, by selected ages for men and women aged 15–49  
United States, 2015–2019





# References

---

[Nirsevimab US regulatory submission accepted for the prevention of RSV lower respiratory tract disease in infants and children up to age 24 months \(astrazeneca.com\)](https://astrazeneca.com)

---

[RSV National Trends - NREVSS | CDC](#)

---

[Human Papillomavirus Vaccines \(aap.org\)](https://aap.org)

---

[STD Facts - Human papillomavirus \(HPV\) \(cdc.gov\)](https://cdc.gov)

---

[Vaccination Coverage by Age 24 Months Among Children Born During 2018–2019 — National Immunization Survey–Child, United States, 2019–2021 | MMWR \(cdc.gov\)](#)

---

[Vaccination Coverage with Selected Vaccines and Exemption Rates Among Children in Kindergarten — United States, 2021–22 School Year | MMWR \(cdc.gov\)](#)

---

[National Health Statistics Reports, Number 179, January 10, 2023 \(cdc.gov\)](#)