



Performing Arts Task Force

February 26, 2019

11:30 – 1:00 p.m.

City Hall Chambers

225 4th St. N.

Agenda

1. JLG Site Selection Criteria (*Attachment #1*)
2. Civic Plaza Update – *Scott Bishop, Bishop Land Design*
3. Reports/Updates from the February 12, 2019 Task Force Meeting – *Staff*
 - a. 2018 Civic Center events/attendance (*Attachment #2*)
 - b. Facility parking needs/availability (*Attachment #3*)
 - c. Civic Center telecommunications infrastructure



Performing Arts Task Force

Meeting Summary

February 12, 2019

Task Force Members Present: Dan Armbrust, Linda Boyd, Charley Johnson, Travis Koch, Dave Piepkorn, Arlette Preston, Jeff Schatz, & John Strand

Staff Present: Kent Costin, Jim Gilmour, Michael Redlinger, & Rob Sobolik

1. FargoDome Presentation – *Rob Sobolik*
 - Rob Sobolik, FargoDome General Manager, provided a report on the FargoDome’s 2019 Operating Budget and the financial statement format used for the facility.
 - An operations pro forma from the 2015 HVS Feasibility Study was presented to the Task Force. The pro forma demonstrates the number of potential events and attendees for the proposed Performing Arts Center and the FargoDome.
 - Sobolik answered questions from the Task Force regarding the program design for the proposed facility and the role of food and beverage contracts and special event rentals in supporting the facility.

2. Performing Arts Center User & Stakeholder Review/Verification from 2015 Study – *JLG Architects*
 - Rob Remark, JLG Architects, shared a summary of potential facility users and stakeholders identified in the 2015 HVS Feasibility Study.
 - It was requested that Task Force members assist with the identification of stakeholders that should be contacted again in 2019. It was suggested that the Fargo, West Fargo, and Moorhead Mayors, together with the Superintendents for each of the public school districts, be contacted for coordination and outreach.
 - JLG will assist with the development of a unified question set that can be presented to each of the stakeholders to be contacted.

3. Site Vision/Analysis: Objectives & Criteria – *JLG Architects*
 - The Task Force confirmed that 2 sites should continue to be evaluated for a Performing Arts Center: the present-day Civic Center location and the Downtown Library east parking lot (Civic Plaza). It was determined that the Mid-America Steel site should not be considered further as a location for a Performing Arts Center.
 - The Task Force requested staff research and report on parking needs/availability for a 2,500 seat facility.

- Task Force members discussed the attributes of the two sites, including connectivity to the skyway system and other parking facilities; access to food and beverage options in downtown; and the City's desired land use pattern in downtown.
- Other topics that should be researched include the number of annual events at the Civic Center; Prairie Public Television's broadcast equipment located on the Civic Center roof; and the support of veterans organizations for the Civic Center.
- The Task Force will receive an update at its February 26th meeting from Scott Bishop, Bishop Land Design, on the Civic Plaza planning process.

Attachment #1



Google Earth

FARGO PERFORMING ARTS CENTER TASK FORCE

SITE SELECTION CRITERIA: Parking & 5 Minute Walk

Adjacencies

- Parking
- Skyway
- Downtown Amenities
- Walkability – Park Once
- Civic Plaza

Accessibility

- Visitor
- Service
- Visibility/Presence

Economic Impact

- Construction cost
- Operations Cost
- Downtown District
- Development Catalyst

Technical/Logistics

- Physically Fits
- Flood (Elevation)
- Existing Constraints
 - Pump House
 - Prairie Public Equipment



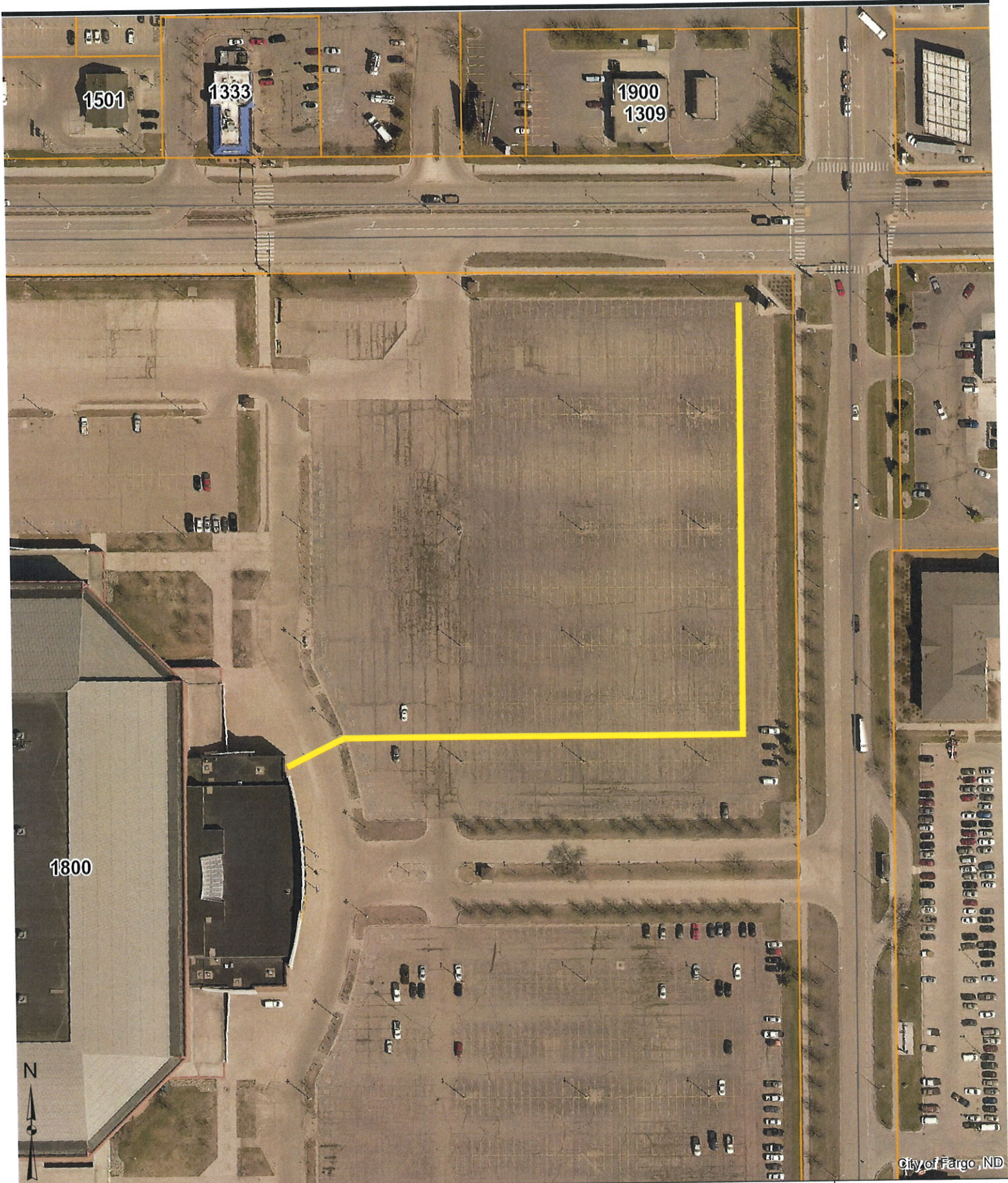
Attachment #2

2018 Civic Center Events

Month	Event	Days	Attendance
January	Food Show - 1	5	2,500
	Trade Show - 2		
February	Basketball - 2	4	1,150
	Trade Show - 1		
March	Concert - 1	5	3,025
	Trade Show - 2		
	Sporting Event - 2		
April	Dance - 2	13	5,000
	Trade Show - 3		
May	Dance - 1	6	4,400
	Concert - 1		
	Trade Show - 1		
June	Trade Show - 3	3	2,250
July	Basketball - 1	2	3,000
	Trade Show - 1		
August	No Events	---	---
September	Trade Show - 4	5	3,040
October	Concerts - 2	5	5,500
	Marathon - 1		
	Trade Show - 1		
November	Concerts - 1	5	2,800
	Trade Show - 3		
	Sportin Event - 1		
December	Concerts - 2	5	4,300
	Trade Show - 3		

Attachment #3

<u>Parking</u>	<u>Distance</u>	<u>Available Parking</u>	<u>Facility Size</u>
Civic Center Ramp	300 feet	100	250
Block 9 Garage	700 feet	200	379
ROCO Garage	1,200 feet	200	454
GTC Garage	1,200 feet	150	185
City Center Surface	700 feet	100	111
TOTALS		750	
Proposed Mercantile	1,400 feet	200	350
2020 Total		950	



These data are provided on an "AS-IS" basis, without warranty of any type, expressed or implied, including but not limited to any warranty as to their performance, merchantability, or fitness for any particular purpose.

FargoDome - 930 Feet

1:2,257

2/25/2019 10:26:29 AM

This map is not a substitute for accurate field surveys or for locating actual property lines and any adjacent features.

