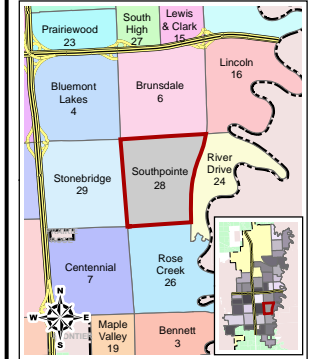


City of Fargo Southpointe Neighborhood Index Sheet #28

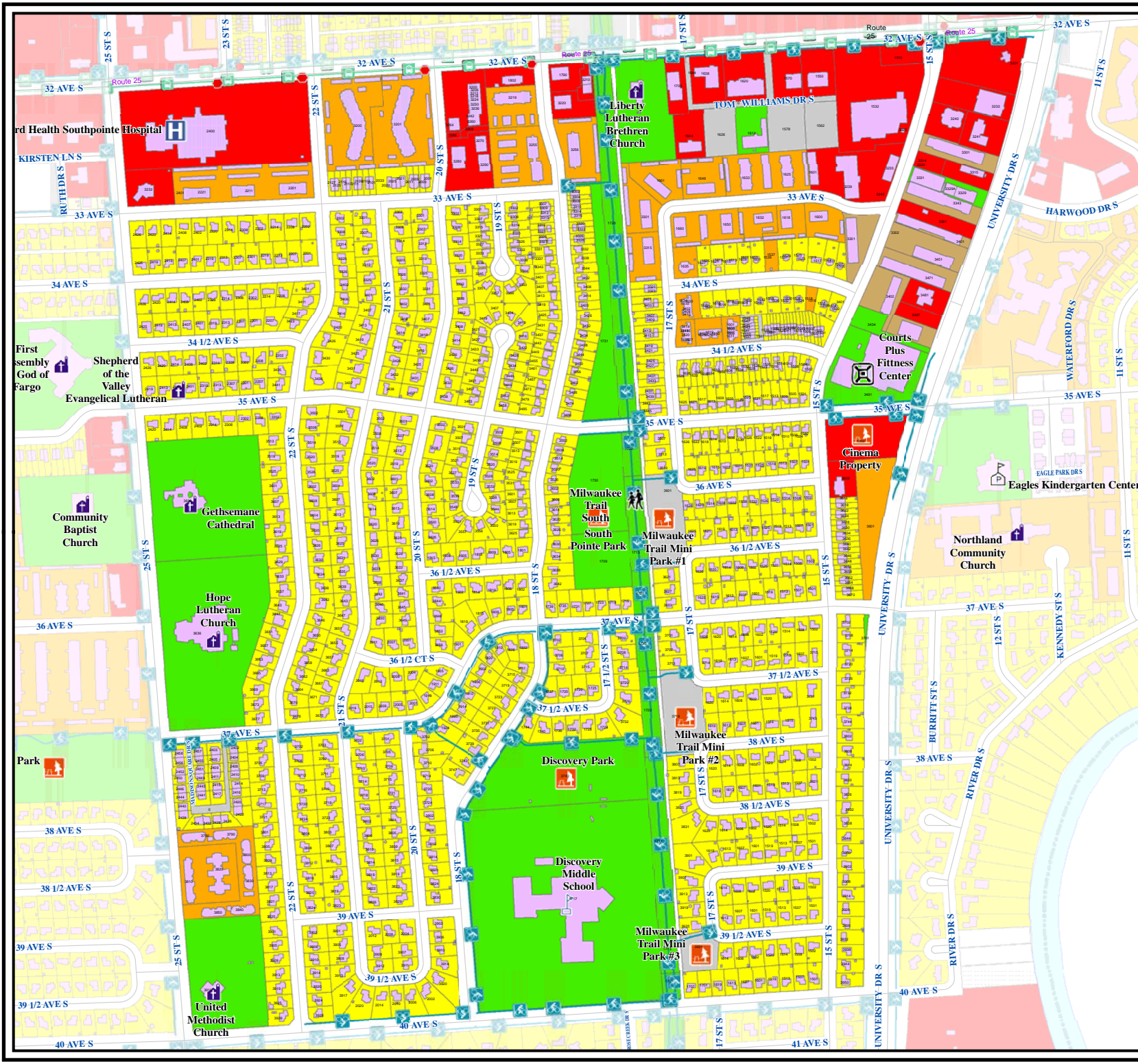


Legend

- Public Pre School
- Elementary School
- Middle School
- High School
- Private School
- College
- Church
- Cemetery
- Golf Course
- Park
- Public Swimming Pool
- Recreation Trail
- Bike Path
- Area Attraction
- Event Center
- Fire Station
- Government Building
- Hospital
- Library
- Police Station
- Sports Complex
- Transportation
- MAT Bus Stop
- MAT Bus Route
- Railroad
- Airport
- Interstate
- Water Feature
- Building Footprint
- Fargo City Limit Line
- Fargo ET Line

Land Use

- High Density Residential
- Commercial
- Low Density Residential
- Public And Institutional
- Industrial
- Mixed Use
- Vacant
- Other



W:\Larsbough_3/09/2012_MG\GIS\Fargo\Data\Drags\Admin\MAP_Projects\Departments\Planning\Neighborhoods\Neighborhood_Mapbook.mxd